

EXHIBIT E

From: O'Connor, Dan </O=GEORGIA GENERAL ASSEMBLY/OU=FIRST ADMINISTRATIVE GROUP/CN=RECIPIENTS/CN=DAN.O'CONNOR>
Sent: Wednesday, June 3, 2015 11:26 AM
To: Mike Seigle <mseigle@landmarkcommunications.net>
Subject: RE: Is there a good map that shows the changes in district lines this year?
Attach: Henry--2016 House Changes.pdf; House Dist. 110--2014 General.xlsx; House Dist. 111--2014 General.xlsx



Mike, attached above is PDF of Henry County, showing just the districts affected by the changes from this year's State House "tweaks" (HB 566). Since no districts in far north Henry were affected by the changes, they are not displayed on this PDF. Also attached to right are Excel sheets showing how Welch and Strickland did against their Democratic opposition last year in their respective current districts (how current 110 and 111 voted). Welch won pretty handily, with a lot of his margin coming from the Butts County portion of his district (Butts is split between him and Rep. Susan Holmes), while Strickland, his district entirely within Henry, won by a much closer 53-47% margin (but still running a few points ahead of Deal in the district). Of course with 111 running along I-75, it has trended more Democratic in recent years than HD 109 and 110 (Henry of course has been trending Democratic the last 10 years---Bush got about two-thirds of the county's vote in 2004 but McCain won just 53% there in 2008 and Romney in 2012; in 2014, Henry narrowly backed Carter for governor, the first time since 1990 that the county supported a Democrat for governor.)

In terms of political changes to House Districts 109, 110 and 111, listed below is how those districts voted in 2012 and 2014 under the current (2012-adopted) map ("old map") and how they would have voted under HB 566 ("new map" that takes effect with the regular 2016 election cycle).

2012 PRESIDENT:

Old Map New Map

HD 109 Romney 61%, Obama 38% Romney 59%, Obama 40%

HD 110 Romney 60%, Obama 39% Romney 59%, Obama 40%

HD 111 Romney 50%, Obama 49% Romney 54%, Obama 45%

2014 GOVERNOR

HD 109 Deal 57%, Carter 41% Deal 58%, Carter 40%

HD 110 Deal 59%, Carter 39% Deal 57%, Carter 40%

HD 111 Deal 48%, Carter 50% Deal 52%, Carter 46%

BLACK VOTER REGISTRATION (2014 CYCLE):

Old Map New Map

HD 109 29% 30%

HD 110 30% 31%

HD 111 37% 34%

Thus overall, looks like HD 111 gets about 4% more Republican with 3% reduction in black percentage

(registered voters), with barely perceptible changes (1% more black) in HD 109 and 110.

Will send some more items concerning your request after lunch today---juggling a few requests today between the special elections, city maps and the like!

--Dan O

-----Original Message-----

From: Mike Seigle [mailto:mseigle@landmarkcommunications.net]

Sent: Tuesday, June 02, 2015 1:59 PM

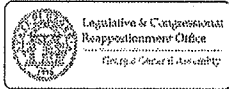
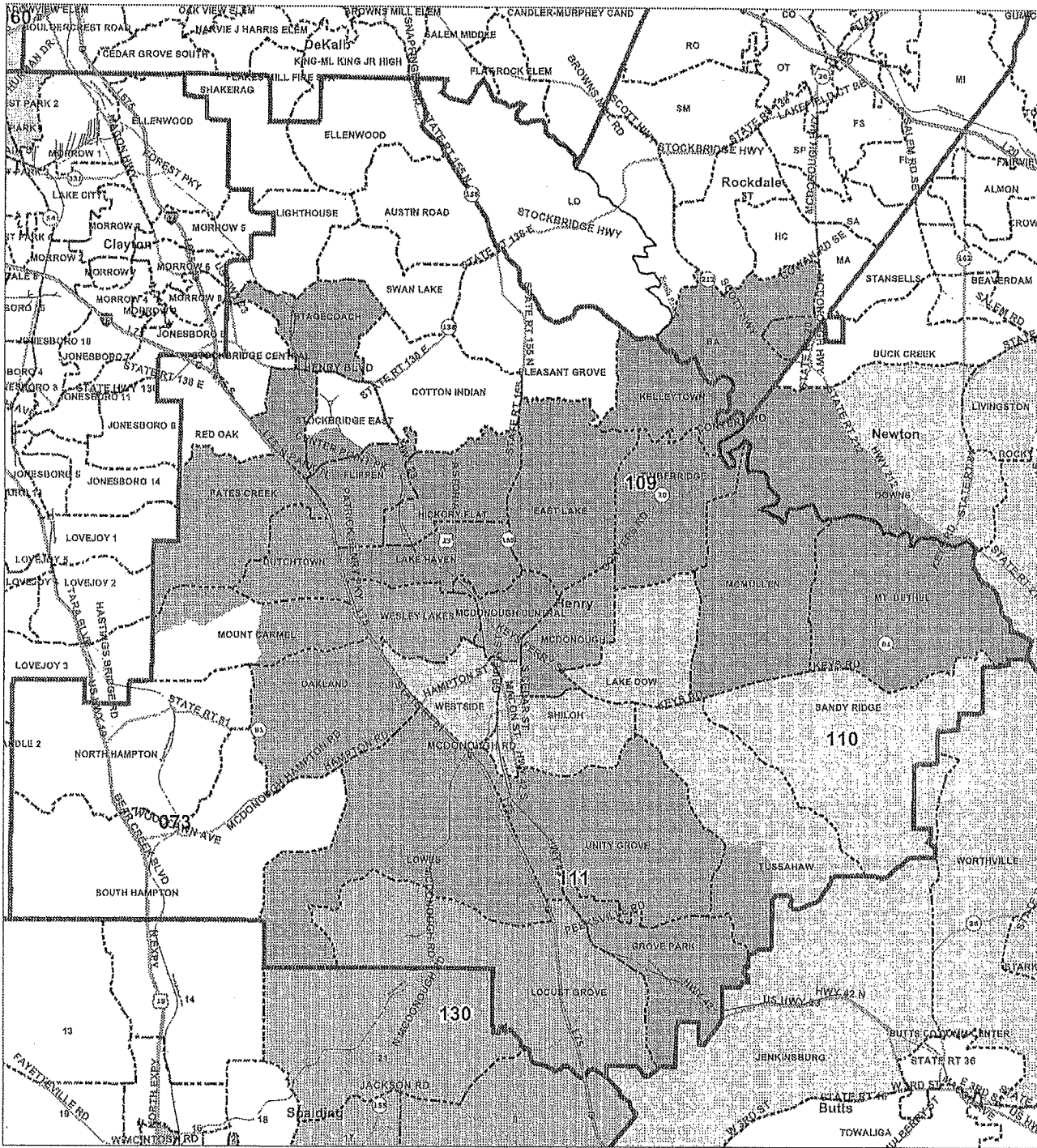
To: O'Connor, Dan

Subject: Is there a good map that shows the changes in district lines this year?

I am particularly interested in House 110

Client: H069
Plan: House-amdsb-2015
Type: House

Henry County--Changes to House Districts, 2016 Election



House District 110---Voting by County/Precinct in November 2014 General Election for this Seat

Butts--HD 110	Votes	Votes	Total	[R]	Pct.%	Pct.%
Precincts	Welch	Shipley	Votes	Margin	[R]	[D]
Butts County CC (pt)	28	27	55	1	50.9%	49.1%
Jenkinsburg (part)	627	382	1,009	245	62.1%	37.9%
Stark	1,028	128	1,156	900	88.9%	11.1%
Worthville	702	110	812	592	86.5%	13.5%
Butts Totals:	2,385	647	3,032	1,738	78.7%	21.3%
Henry--HD 110						
Precincts	Votes	Votes	Total	[R]	Pct.%	Pct.%
	Welch	Shipley	Votes	Margin	[R]	[D]
Tussahaw	1,202	170	1,372	1,032	87.6%	12.4%
Sandy Ridge	1,359	299	1,658	1,060	82.0%	18.0%
Westside	358	1,498	1,856	-1,140	19.3%	80.7%
McDonough	357	371	728	-14	49.0%	51.0%
Shiloh	534	842	1,376	-308	38.8%	61.2%
Lake Dow	1,603	590	2,193	1,013	73.1%	26.9%
McDonough Cent. (pt)	414	462	876	-48	47.3%	52.7%
Henry Totals:	5,827	4,232	10,059	1,595	57.9%	42.1%
Newton--HD 110						
Precincts	Votes	Votes	Total	[R]	Pct.%	Pct.%
	Welch	Shipley	Votes	Margin	[R]	[D]
Brewers (part)	196	60	256	136	76.6%	23.4%
Rocky Plains	655	503	1,158	152	56.6%	43.4%
Newton Totals:	851	563	1,414	288	60.2%	39.8%
House District 110						
County Summary	Votes	Votes	Total	[R]	Pct.%	Pct.%
	Welch	Shipley	Votes	Margin	[R]	[D]
Butts (part)	2,385	647	3,032	1,738	78.7%	21.3%
Henry (part)	5,827	4,232	10,059	1,595	57.9%	42.1%
Newton (part)	851	563	1,414	288	60.2%	39.8%
District 110 Totals:	9,063	5,442	14,505	3,621	62.5%	37.5%

House District 111---Voting by Precinct in November 2014 General Election for this Seat

House Dist. 111 Henry Precincts	Votes Strickland	Votes Nichols	Total Votes	Beskin Margin	Pct.% [R]	Pct.% [D]
Lowes	1,439	1,356	2,795	83	51.5%	48.5%
North Hampton (pt)	720	473	1,193	247	60.4%	39.6%
Mount Carmel	556	978	1,534	-422	36.2%	63.8%
Wesley Lakes	718	1,176	1,894	-458	37.9%	62.1%
Stockbridge West	265	1,220	1,485	-955	17.8%	82.2%
Stagecoach	681	638	1,319	43	51.6%	48.4%
Unity Grove	1,428	361	1,789	1,067	79.8%	20.2%
Pates Creek	1,238	954	2,192	284	56.5%	43.5%
Oakland	1,165	644	1,809	521	64.4%	35.6%
Dutchtown	842	373	1,215	469	69.3%	30.7%
McDonough Cent (pt)	488	243	731	245	66.8%	33.2%
Dist. 111 Totals:	9,540	8,416	17,956	1,124	53.1%	46.9%