

EXPERT REPORT OF MAXWELL PALMER, PH.D.

1. My name is Maxwell Palmer. I am currently an Associate Professor of Political Science at Boston University. I previously submitted reports in this case on December 12, 2022 and December 22, 2022. My first report sets forth my qualifications in detail. A copy of my most recent curriculum vitae is attached as Exhibit A.
2. I testified in this matter in the February 2022 preliminary injunction proceedings and the October 2023 trial. I was accepted by the Court in both proceedings as an expert in redistricting and data analysis. The Court found me to be a credible expert witness and credited my testimony on racially polarized voting and performance in its June 6, 2022 and October 26, 2023 opinions.
4. In its October 26, 2023 order, the Court required the drawing of two new majority-Black Senate districts and five new majority-Black House districts. I was asked by the plaintiffs in this litigation to evaluate the performance of Black-opportunity districts under the 2021 Plan and the new Remedial Plan enacted by the Georgia legislature on December 5, 2023. I was also asked to offer an expert opinion on the extent to which voting is racially polarized in selected districts under the enacted and remedial maps.

Performance of Black-Preferred Candidates Under the Remedial Maps

Senate Map

8. The Remedial Map creates two new majority-Black districts: SD 17 and SD 28. Under this map, Black-preferred candidates would have been able to win every statewide election from 2012 to 2022 in both districts. Black-preferred candidates average 71.5% of the vote in the 17th District and 70.8% in the 28th District. Figure 1 and Table 1 present the results.¹

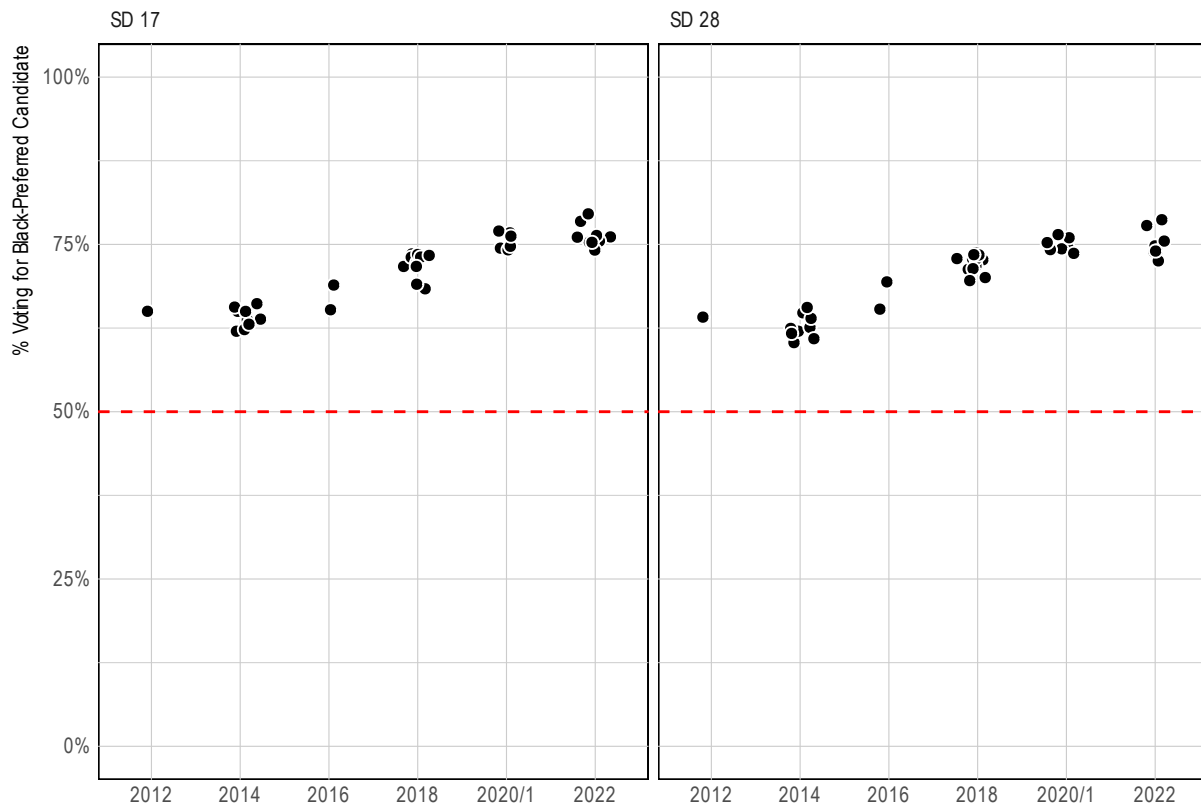


Figure 1: Performance of Black-Preferred Candidates Under the Remedial Senate Map

¹My determination of which candidates are Black-preferred for this analysis is based on my prior report in this matter, examining elections in the areas of Remedial SD 17 and SD 28.

House Map

9. The Remedial Map creates five new majority-Black districts: HD 64, HD 74, HD 117, HD 145, and HD 149. Under this map, Black-preferred candidates would have been able to win every statewide election from 2012 to 2022 in House Districts 64, 74, 117, and 149, and 38 of the 41 contests in House District 145. Black-preferred candidates average 61.4% of the vote in HD 64, 73.5% of the vote in HD 74, 67.7% of the vote in HD 117, 53.4% of the vote in HD 145, and 59.5% of the vote in HD 149. Figure 2 and Table 2 present the results.²

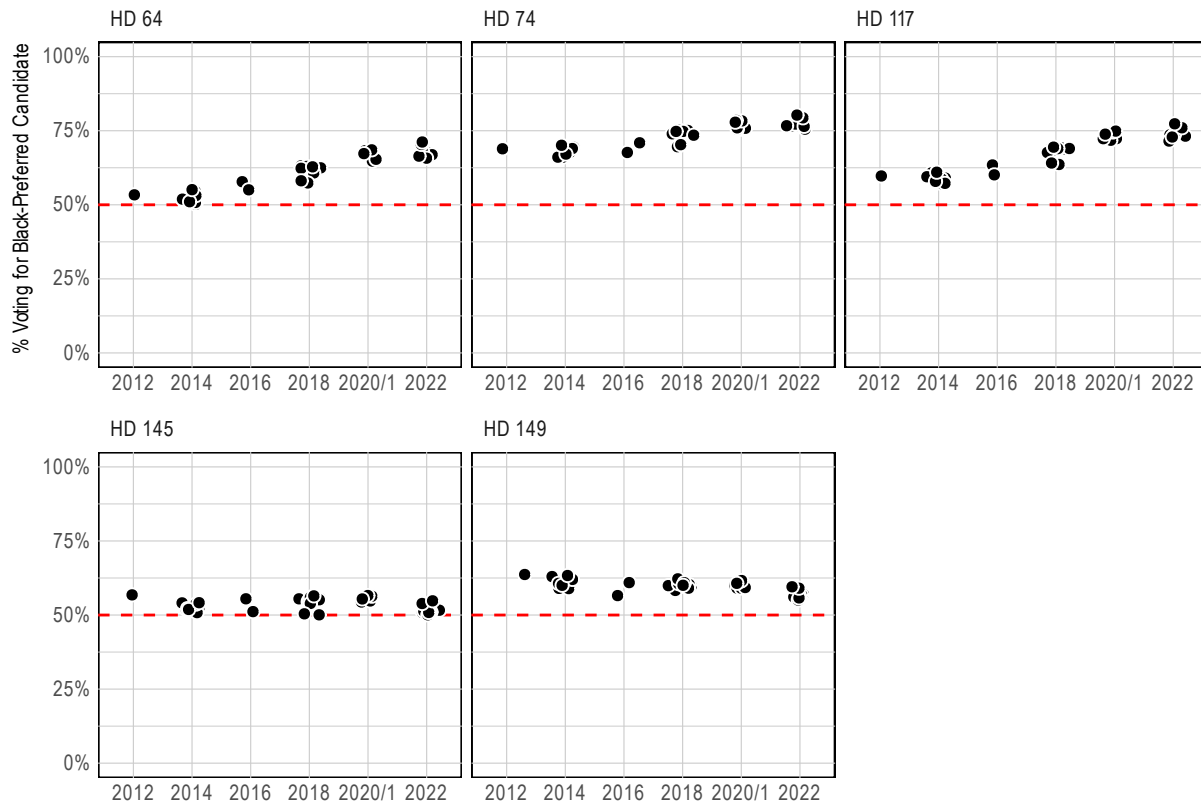


Figure 2: Performance of Black-Preferred Candidates Under the Remedial House Map

²My determination of which candidates are Black-preferred for this analysis is based on my prior report in this matter, examining elections in the areas of Remedial HD 64, HD 74, HD 117, HD 145, and HD 149.

Performance of Black-Preferred Candidates in the Vote Dilution Areas of the Enacted Maps

10. In its October 25, 2023 order, the Court identified 10 Senate districts and 11 House districts under the Enacted Map that violated Section 2 of the Voting Rights Act. I was asked to analyze the performance of these districts using past election results.
11. Across the ten Senate districts in the dilution area under the Enacted Senate Map, Black-preferred candidates would have been able to win every statewide election from 2012 to 2022 in the five Black-majority districts, and would have lost every election in the five White-majority districts. Figure 3 and Table 3 present the results.³

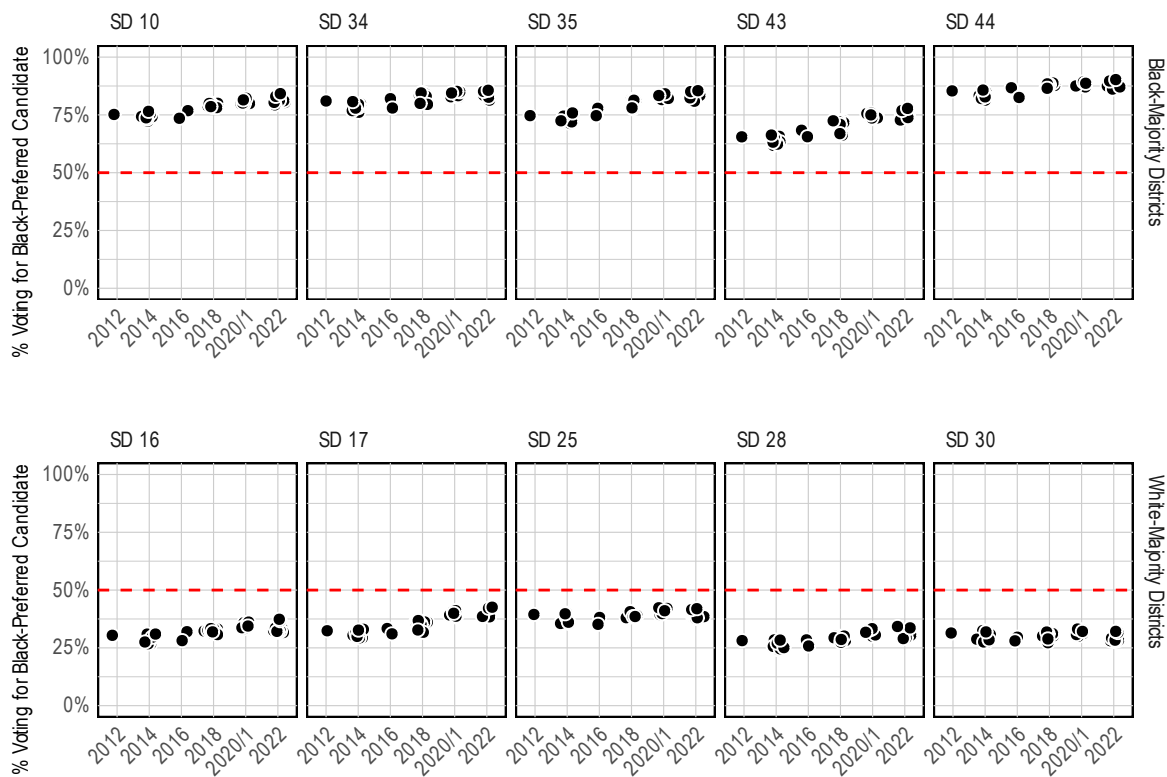


Figure 3: Performance of Black-Preferred Candidates In the Dilution Area of the Enacted Senate Map

12. Across the eleven House districts in the dilution area under the Enacted House Map, Black-preferred candidates would have been able to win every statewide election from 2012 to 2022 in the four Black-majority districts, and would have lost every election in the six of the seven White-majority districts. The only White-majority district where Black-preferred candidates would have had any success is in District 117, where the

³My determination of which candidates are Black-preferred for this analysis is based on my prior report in this matter, examining elections in and around these districts.

Black-preferred candidate won four of the forty-one contests analyzed. Figure 4 and Table 4 present the results.

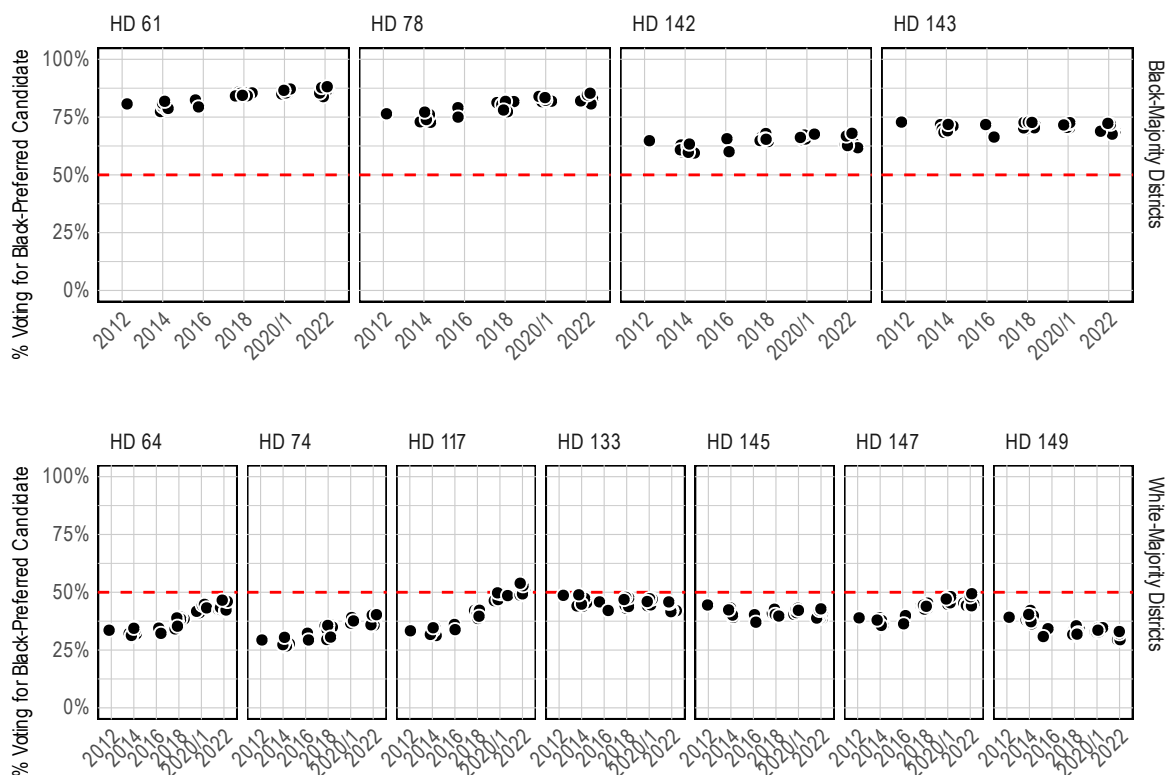


Figure 4: Performance of Black-Preferred Candidates In the Dilution Area of the Enacted House Map

Performance of Black-Preferred Candidates in Selected Districts

13. I was also asked by the Plaintiffs in this litigation to analyze the performance of Black-preferred candidates in House Districts 40, 81, 82, 101, 134, and 149, and Senate Districts 6 and 42, under both the Enacted and Remedial Maps. These districts were reconfigured from the Enacted Map to the Remedial Map, such that they consist of entirely different populations under each map.
14. House District 40 was moved from Cobb County to Douglas and Paulding Counties. House District 81 was moved from DeKalb County to Henry County. House District 82 was moved from DeKalb County to Fayette and Spaulding Counties. House District 101 was moved from Gwinnett County to DeKalb County. House District 134 was moved from Lamar, Monroe, and Spalding Counties to Crawford, Lamar, Peach, and Upson Counties. House District 149 was moved from Bleckley, Dodge, Telfair, Twiggs, and Wilkinson Counties to Baldwin, Bibb, and Jones Counties. Senate District 6 was moved from Cobb and Fulton Counties to Carroll, Coweta, and Heard Counties. Senate District 42 was moved from DeKalb County to Henry, Morgan, Newton, and Walton Counties.
15. This analysis requires two steps. First, I used ecological inference to identify the Black-preferred candidate in each district for each statewide election.⁴ Second, having identified the Black-preferred candidate, I calculated the share of the vote that candidate would receive. This analysis requires estimating hundreds of ecological inference models.
16. Figure 5 presents the results of this analysis. The panel on the left shows the performance of each district under the enacted map, and the panel on the right shows performance under the remedial map. Each gray circle corresponds to one of the 41 statewide contests analyzed, and the green circle is the average performance of Black-preferred candidates in each district.
17. Figure 5 shows that three of the House districts and both Senate districts performed for Black-preferred candidates under the Enacted Map. In HD 40, Black-preferred candidates averaged 58.6% of the vote and won 32 of the 41 elections. In HD 81, Black-preferred candidates averaged 63.7% of the vote and won 40 of the 41 elections. In HD 82, Black-preferred candidates averaged 75.1% of the vote and won all of the 41 elections. In SD 6, Black-preferred candidates averaged 51.7% of the vote and won 30 of the 41 elections. In SD 42, Black-preferred candidates averaged 80.7% of the vote and won all of the 41 elections. Two House districts did not perform for Black-preferred candidates under the Enacted Map. In HD 134, Black-preferred candidates averaged 35.5% of the vote and won none of the 41 elections. In HD 149, Black-preferred candidates averaged 33.7% of the vote and won none of the 41 elections. House District 101 was an extremely competitive district where Black-preferred candidates had mixed

⁴There are not enough precincts in the House districts to run the EI models. Instead, I use the full county or counties that contain the districts under each map to identify the Black-preferred candidate in each election. However, to assess the performance of each candidate, I use only the precincts within each district.

success. In HD 101, Black-preferred candidates averaged 50.0% of the vote and won 27 of the 41 elections.

18. Under the Remedial Map, the five districts that performed for Black-preferred candidates no longer do so. House Districts 101 and 149 now perform for Black-preferred candidates, and House District 134 does not perform for Black-preferred candidates under either map. Under the Remedial Map, Black-preferred candidates averaged 35.8% in HD 40, 31.0% in HD 81, 33.4% in HD 82, 66.6% in HD 101, 32.0% in HD 134, 59.5% in HD 149, 26.4% in SD 6, and 37.5% in SD 42. Tables 5 and 6 provide the full results.

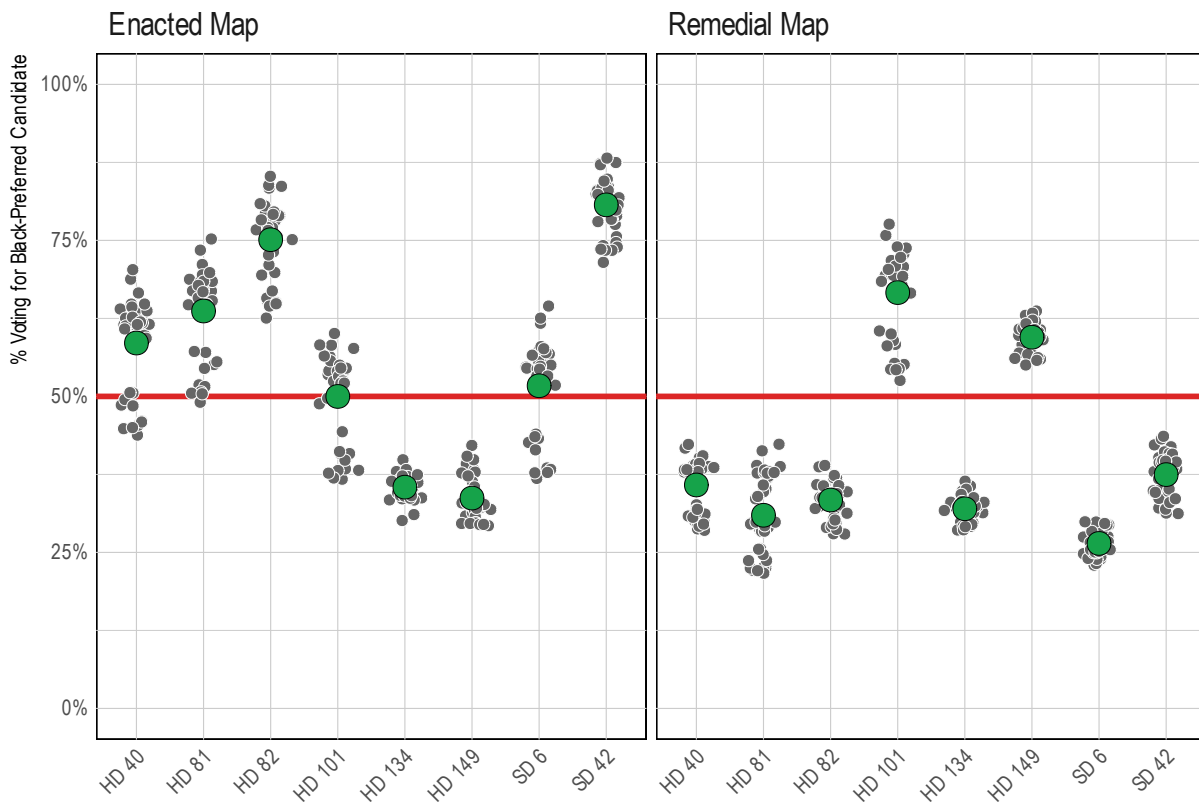


Figure 5: Performance of Minority-Preferred Candidates Under the Enacted and Illustrative Maps

Table 1: Election Results in the Black-Majority Districts — Remedial Senate Map — Vote Share of Black-Preferred Candidates

		SD 17	SD 28
2012 GEN	U.S. President	65.0%	64.1%
2014 GEN	U.S. Senator	66.1%	65.6%
	Governor	65.6%	64.8%
	Lt. Governor	62.3%	60.9%
	Sec. of State	63.1%	61.7%
	Attorney General	65.0%	62.0%
	Com. Agriculture	62.0%	60.3%
	Com. Insurance	63.8%	62.6%
	Com. Labor	63.7%	62.4%
	School Super.	65.0%	63.9%
2016 GEN	U.S. President	68.9%	69.4%
	U.S. Senator	65.2%	65.3%
2018 GEN	Governor	73.6%	73.8%
	Lt. Governor	72.7%	72.8%
	Sec. of State	73.4%	73.5%
	Attorney General	72.9%	72.7%
	Com. Agriculture	71.7%	71.3%
	Com. Insurance	73.1%	72.8%
	Com. Labor	72.2%	71.8%
	School Super.	71.7%	71.4%
	Public Serv. Com. 3	73.5%	73.4%
	Public Serv. Com. 5	73.1%	72.9%
2018 RUN	Sec. of State	68.4%	69.6%
	Public Serv. Com. 3	69.0%	70.0%
2020 GEN	U.S. President	74.4%	74.6%
	U.S. Senator	74.5%	74.3%
	Public Serv. Com. 1	74.2%	73.7%
	Public Serv. Com. 4	74.7%	74.2%
2021 RUN	U.S. Senator (Perdue)	76.7%	76.0%
	U.S. Senator (Loeffler)	77.0%	76.5%
	Public Serv. Com. 4	76.2%	75.3%
2022 GEN	U.S. Senator	78.4%	77.8%
	Governor	75.5%	74.0%
	Lt. Governor	76.3%	75.5%
	Sec. of State	74.2%	72.5%
	Attorney General	76.1%	75.1%
	Com. Agriculture	75.6%	74.2%
	Com. Insurance	75.3%	73.9%
	Com. Labor	76.1%	74.8%
	School Super.	75.3%	74.0%
2022 RUN	U.S. Senator	79.6%	78.7%

Table 2: Election Results in the Black-Majority Districts — Remedial House Map — Vote Share of Black-Preferred Candidates

		HD 64	HD 74	HD 117	HD 145	HD 149
2012 GEN	U.S. President	53.4%	68.9%	59.7%	56.8%	63.7%
2014 GEN	U.S. Senator	55.1%	70.1%	61.0%	54.2%	63.3%
	Governor	54.6%	69.4%	60.8%	54.1%	63.0%
	Lt. Governor	50.8%	66.1%	57.2%	50.8%	58.9%
	Sec. of State	51.0%	67.1%	57.9%	51.9%	60.0%
	Attorney General	51.9%	68.9%	59.0%	52.0%	60.5%
	Com. Agriculture	50.2%	66.0%	57.0%	51.5%	59.0%
	Com. Insurance	51.9%	67.7%	58.7%	52.2%	60.7%
	Com. Labor	51.8%	67.7%	58.7%	52.3%	60.4%
	School Super.	53.1%	69.0%	59.5%	53.7%	62.0%
2016 GEN	U.S. President	57.8%	70.9%	63.4%	55.5%	61.0%
	U.S. Senator	55.1%	67.7%	60.1%	51.2%	56.6%
2018 GEN	Governor	63.1%	75.1%	69.3%	55.5%	60.6%
	Lt. Governor	62.5%	74.4%	68.5%	54.7%	59.9%
	Sec. of State	62.8%	74.8%	69.5%	56.5%	62.2%
	Attorney General	62.4%	74.6%	68.7%	55.5%	59.9%
	Com. Agriculture	61.0%	73.5%	67.5%	53.7%	58.3%
	Com. Insurance	62.3%	74.7%	69.0%	54.7%	59.8%
	Com. Labor	61.4%	74.0%	67.8%	54.3%	59.4%
	School Super.	60.8%	73.5%	67.7%	53.9%	59.1%
	Public Serv. Com. 3	63.0%	75.2%	69.2%	56.0%	60.8%
	Public Serv. Com. 5	62.3%	74.8%	69.0%	55.2%	60.3%
2018 RUN	Sec. of State	57.4%	69.6%	63.6%	50.4%	60.9%
	Public Serv. Com. 3	58.1%	70.3%	64.1%	50.1%	60.0%
2020 GEN	U.S. President	65.9%	75.5%	72.4%	55.6%	60.0%
	U.S. Senator	65.9%	75.8%	72.3%	55.0%	59.1%
	Public Serv. Com. 1	64.7%	75.5%	71.8%	54.4%	59.1%
	Public Serv. Com. 4	65.4%	76.0%	72.3%	54.7%	59.3%
2021 RUN	U.S. Senator (Perdue)	68.2%	78.3%	74.6%	56.4%	61.4%
	U.S. Senator (Loeffler)	68.5%	78.5%	74.9%	56.6%	61.6%
	Public Serv. Com. 4	67.3%	77.9%	73.8%	55.4%	60.7%
2022 GEN	U.S. Senator	70.4%	79.4%	76.0%	53.9%	59.1%
	Governor	66.9%	76.7%	73.2%	50.8%	56.2%
	Lt. Governor	68.1%	77.5%	73.6%	51.3%	56.1%
	Sec. of State	65.7%	75.5%	71.5%	50.1%	55.0%
	Attorney General	67.7%	77.2%	73.6%	51.6%	57.0%
	Com. Agriculture	66.9%	76.9%	73.2%	51.0%	56.0%
	Com. Insurance	66.6%	76.7%	72.9%	50.9%	56.0%
	Com. Labor	67.5%	77.3%	73.6%	51.4%	56.7%
2022 RUN	School Super.	66.4%	76.5%	72.9%	50.9%	55.8%
	U.S. Senator	71.2%	80.3%	77.3%	54.8%	59.5%

Table 3: Election Results in the Enacted Senate Map Dilution Area — Vote Share of Black-Preferred Candidates

		SD 10	SD 16	SD 17	SD 25	SD 28	SD 30	SD 34	SD 35	SD 43	SD 44
2012 GEN	U.S. President	75.2%	30.4%	32.4%	39.4%	28.1%	31.4%	81.0%	74.7%	65.5%	85.4%
2014 GEN	U.S. Senator	76.5%	31.0%	32.7%	39.7%	28.4%	31.9%	80.7%	75.8%	66.3%	85.7%
	Governor	75.9%	31.0%	33.0%	40.0%	28.4%	32.5%	79.7%	75.1%	65.7%	84.8%
	Lt. Governor	73.2%	26.8%	29.3%	35.6%	24.6%	27.5%	76.8%	72.0%	62.4%	82.1%
	Sec. of State	73.7%	27.5%	30.0%	36.1%	25.1%	28.5%	77.9%	72.5%	63.2%	82.8%
	Attorney General	74.2%	28.7%	31.2%	37.4%	26.1%	29.2%	78.5%	73.2%	63.3%	84.0%
	Com. Agriculture	72.3%	26.8%	29.3%	35.6%	24.3%	27.4%	76.1%	71.3%	61.8%	81.4%
	Com. Insurance	74.3%	27.8%	30.2%	36.7%	25.2%	28.8%	78.2%	73.4%	63.4%	83.1%
	Com. Labor	74.2%	27.9%	30.5%	36.9%	25.6%	28.8%	78.5%	73.4%	63.5%	83.4%
	School Super.	75.5%	29.6%	31.6%	38.4%	27.0%	30.8%	79.5%	74.5%	64.8%	84.5%
2016 GEN	U.S. President	76.8%	32.0%	33.4%	38.2%	28.5%	29.6%	82.0%	77.9%	68.4%	86.7%
	U.S. Senator	73.5%	28.1%	31.1%	35.2%	25.8%	28.0%	78.0%	74.7%	65.6%	82.5%
2018 GEN	Governor	80.2%	33.3%	36.5%	39.4%	30.0%	31.3%	84.7%	81.6%	72.5%	88.8%
	Lt. Governor	79.4%	32.6%	36.1%	39.0%	29.6%	31.1%	83.8%	80.9%	71.7%	88.0%
	Sec. of State	79.9%	33.3%	36.8%	40.7%	30.1%	31.8%	84.5%	81.3%	72.4%	88.4%
	Attorney General	79.3%	33.1%	36.7%	39.6%	30.1%	31.9%	83.7%	80.7%	71.9%	87.7%
	Com. Agriculture	78.3%	31.4%	35.0%	37.8%	28.5%	30.2%	82.9%	79.7%	70.6%	86.7%
	Com. Insurance	79.7%	32.3%	36.1%	38.9%	29.2%	30.7%	84.2%	81.1%	72.1%	88.1%
	Com. Labor	78.8%	31.8%	35.6%	38.5%	28.8%	30.3%	83.3%	80.1%	71.2%	87.2%
	School Super.	78.5%	31.3%	35.1%	38.1%	28.2%	30.1%	83.0%	79.9%	70.9%	86.8%
	Public Serv. Com. 3	80.0%	33.1%	36.7%	39.8%	29.9%	31.8%	84.6%	81.4%	72.5%	88.5%
	Public Serv. Com. 5	79.7%	32.4%	36.2%	39.2%	29.4%	31.1%	84.0%	81.0%	72.1%	88.1%
2018 RUN	Sec. of State	78.2%	30.7%	31.8%	38.5%	27.4%	27.2%	79.6%	77.7%	66.2%	86.1%
	Public Serv. Com. 3	78.6%	31.9%	32.7%	38.6%	28.6%	28.9%	80.0%	78.1%	66.9%	86.5%
2020 GEN	U.S. President	79.8%	35.9%	39.8%	40.9%	32.5%	31.5%	82.7%	81.9%	73.5%	87.0%
	U.S. Senator	79.9%	34.6%	39.2%	40.2%	31.6%	31.1%	83.1%	82.1%	73.7%	87.4%
	Public Serv. Com. 1	79.8%	33.3%	38.4%	39.4%	30.1%	30.0%	82.8%	81.6%	73.3%	87.1%
	Public Serv. Com. 4	80.1%	33.7%	38.7%	39.8%	30.6%	30.8%	83.3%	82.1%	73.6%	87.5%
2021 RUN	U.S. Senator (Perdue)	81.9%	35.7%	40.8%	42.1%	32.9%	32.7%	85.0%	83.8%	75.6%	89.1%
	U.S. Senator (Loeffler)	82.2%	36.1%	41.1%	42.3%	33.3%	33.1%	85.2%	84.1%	75.8%	89.3%
	Public Serv. Com. 4	81.5%	34.4%	40.0%	41.1%	31.7%	32.1%	84.5%	83.4%	75.0%	88.7%
2022 GEN	U.S. Senator	83.0%	36.7%	42.1%	41.6%	33.6%	31.6%	85.2%	85.1%	76.9%	89.7%
	Governor	80.6%	32.2%	38.8%	38.2%	29.4%	28.1%	82.8%	82.6%	74.2%	87.5%
	Lt. Governor	81.3%	33.6%	39.7%	38.5%	30.6%	29.2%	83.5%	83.4%	75.0%	88.2%
	Sec. of State	79.3%	31.8%	38.4%	37.7%	29.0%	28.1%	81.4%	80.9%	72.8%	86.2%
	Attorney General	81.1%	33.5%	39.8%	39.2%	30.5%	29.2%	83.1%	83.1%	74.8%	87.9%
	Com. Agriculture	80.8%	31.7%	38.4%	37.9%	28.9%	27.7%	83.0%	82.9%	74.3%	87.7%
	Com. Insurance	80.4%	32.1%	38.7%	38.2%	29.3%	28.4%	82.5%	82.4%	74.0%	87.2%
	Com. Labor	81.1%	32.4%	39.0%	38.5%	29.6%	28.3%	83.4%	83.2%	74.7%	88.0%
	School Super.	80.4%	32.1%	38.6%	38.0%	29.0%	28.3%	82.6%	82.4%	73.8%	87.1%
2022 RUN	U.S. Senator	84.2%	37.4%	42.6%	41.9%	34.2%	32.1%	85.6%	85.5%	77.8%	90.3%

Table 4: Election Results in the Enacted House Map Dilution Area — Vote Share of Black-Preferred Candidates

		HD 61	HD 64	HD 74	HD 78	HD 117	HD 133	HD 142	HD 143	HD 145	HD 147	HD 149
2012 GEN	U.S. President	80.7%	33.6%	29.4%	76.4%	33.3%	48.7%	64.8%	72.8%	44.5%	38.9%	39.2%
2014 GEN	U.S. Senator	81.8%	34.4%	30.5%	77.2%	34.7%	48.9%	63.3%	71.8%	42.4%	38.0%	40.4%
	Governor	80.9%	34.8%	30.5%	76.1%	34.9%	49.0%	62.9%	71.7%	43.2%	39.0%	42.1%
	Lt. Governor	78.3%	30.8%	26.8%	73.0%	31.3%	44.1%	59.5%	68.4%	39.2%	35.1%	36.3%
	Sec. of State	78.8%	31.3%	27.3%	73.9%	31.8%	44.8%	59.8%	69.1%	40.1%	35.7%	37.3%
	Attorney General	79.3%	32.2%	28.8%	76.6%	33.6%	45.7%	60.6%	69.5%	40.6%	36.4%	38.2%
	Com. Agriculture	77.4%	31.0%	26.7%	72.7%	31.6%	44.0%	60.0%	69.0%	39.6%	35.5%	38.0%
	Com. Insurance	79.4%	31.8%	27.6%	74.5%	32.3%	45.6%	60.8%	69.9%	40.7%	36.2%	37.7%
	Com. Labor	79.5%	32.0%	27.7%	74.6%	32.6%	45.4%	60.7%	69.9%	40.9%	36.0%	37.9%
	School Super.	80.9%	33.3%	29.0%	76.1%	33.6%	47.4%	62.3%	71.1%	42.4%	37.8%	39.9%
2016 GEN	U.S. President	82.4%	34.5%	32.3%	79.1%	36.1%	45.8%	65.6%	71.8%	40.3%	39.9%	34.2%
	U.S. Senator	79.4%	32.2%	29.4%	75.0%	33.8%	42.1%	60.0%	66.4%	37.1%	36.4%	30.8%
2018 GEN	Governor	85.8%	39.0%	35.6%	82.2%	42.0%	45.3%	67.1%	72.2%	40.8%	44.1%	32.6%
	Lt. Governor	85.1%	38.5%	35.1%	81.3%	41.6%	44.8%	66.2%	71.5%	40.7%	44.1%	32.4%
	Sec. of State	85.5%	38.9%	35.7%	81.8%	42.2%	47.6%	67.9%	72.7%	42.7%	45.3%	35.5%
	Attorney General	84.8%	39.0%	35.7%	81.5%	42.3%	45.0%	66.5%	71.5%	41.4%	44.2%	33.5%
	Com. Agriculture	84.1%	37.6%	34.1%	80.3%	40.7%	43.1%	64.4%	69.9%	39.8%	42.5%	31.4%
	Com. Insurance	85.3%	38.4%	34.9%	81.7%	41.7%	44.5%	66.0%	71.2%	40.5%	43.5%	32.2%
	Com. Labor	84.4%	38.1%	34.4%	80.8%	41.0%	44.4%	65.3%	70.4%	40.3%	43.1%	32.3%
	School Super.	84.2%	37.6%	33.8%	80.4%	40.6%	43.8%	64.8%	70.3%	39.9%	42.7%	31.8%
	Public Serv. Com. 3	85.5%	39.2%	35.7%	82.2%	42.1%	45.7%	67.1%	72.2%	41.6%	44.1%	33.8%
	Public Serv. Com. 5	85.2%	38.5%	35.0%	81.7%	41.9%	45.1%	66.3%	71.7%	41.0%	43.7%	32.8%
2018 RUN	Sec. of State	84.2%	34.1%	29.6%	77.3%	38.7%	47.8%	65.6%	72.8%	40.4%	44.4%	32.5%
	Public Serv. Com. 3	84.4%	35.3%	30.6%	78.1%	39.6%	46.8%	65.4%	72.7%	39.7%	43.9%	31.9%
2020 GEN	U.S. President	85.1%	42.6%	38.4%	81.6%	47.7%	45.6%	66.9%	71.0%	41.8%	46.6%	33.5%
	U.S. Senator	85.4%	42.3%	37.6%	81.9%	47.2%	44.8%	65.8%	70.3%	41.2%	45.8%	32.8%
	Public Serv. Com. 1	85.0%	41.2%	36.3%	81.7%	46.4%	44.2%	65.1%	70.3%	40.5%	44.8%	32.7%
	Public Serv. Com. 4	85.5%	41.8%	36.7%	82.3%	46.8%	44.5%	65.5%	70.5%	41.2%	45.4%	32.9%
2021 RUN	U.S. Senator (Perdue)	86.9%	44.4%	38.8%	83.7%	49.4%	47.0%	67.2%	72.3%	42.9%	47.9%	34.4%
	U.S. Senator (Loeffler)	87.1%	44.8%	39.1%	83.9%	49.8%	47.2%	67.6%	72.6%	43.1%	48.1%	34.7%
	Public Serv. Com. 4	86.6%	43.2%	37.6%	83.4%	48.6%	46.0%	66.2%	71.6%	42.2%	47.1%	33.6%
2022 GEN	U.S. Senator	87.8%	46.0%	40.1%	84.6%	52.8%	45.2%	66.8%	71.9%	42.1%	48.1%	32.1%
	Governor	85.5%	42.5%	36.0%	82.2%	49.5%	42.0%	63.2%	69.2%	38.9%	44.3%	29.6%
	Lt. Governor	86.4%	43.4%	37.2%	83.0%	50.2%	42.1%	63.8%	69.5%	39.3%	44.9%	29.6%
	Sec. of State	83.8%	41.9%	35.7%	80.7%	48.8%	41.1%	61.8%	67.6%	38.8%	44.0%	29.5%
	Attorney General	86.1%	43.2%	37.2%	82.6%	50.3%	43.0%	64.0%	69.8%	39.9%	45.4%	30.7%
	Com. Agriculture	86.0%	42.1%	35.6%	82.4%	49.1%	41.7%	63.1%	69.2%	38.8%	44.3%	29.3%
	Com. Insurance	85.4%	42.4%	35.9%	82.1%	49.5%	41.8%	62.9%	69.0%	39.0%	44.3%	29.8%
	Com. Labor	86.3%	42.8%	36.4%	82.8%	49.7%	42.6%	63.6%	69.5%	39.1%	44.8%	29.7%
	School Super.	85.4%	42.3%	35.9%	82.0%	49.3%	41.6%	62.7%	68.9%	38.8%	44.1%	29.5%
2022 RUN	U.S. Senator	88.2%	46.6%	40.3%	85.3%	53.9%	45.8%	68.0%	72.3%	42.8%	49.4%	33.0%

Table 5: Election Results in the Selected Districts — Enacted House Map — Vote Share of Black-Preferred Candidates

		HD 40	HD 81	HD 82	HD 101	HD 134	HD 149	SD 6	SD 42
2012 GEN	U.S. President	48.6%	55.1%	65.3%	40.8%	39.9%	39.2%	43.3%	75.6%
2014 GEN	U.S. Senator	50.6%	57.1%	71.1%	41.2%	37.9%	40.4%	44.0%	79.0%
	Governor	49.5%	55.5%	69.9%	40.8%	38.0%	42.1%	42.6%	78.0%
	Lt. Governor	44.8%	50.5%	64.5%	36.9%	33.6%	36.3%	37.8%	73.4%
	Sec. of State	45.0%	50.4%	64.8%	37.7%	35.0%	37.3%	37.8%	73.4%
	Attorney General	45.4%	51.9%	65.6%	38.4%	35.3%	38.2%	38.3%	74.2%
	Com. Agriculture	43.8%	49.1%	62.6%	36.7%	33.7%	38.0%	36.9%	71.5%
	Com. Insurance	46.0%	51.6%	65.7%	38.1%	35.1%	37.7%	38.5%	74.7%
	Com. Labor	45.9%	50.7%	65.0%	38.2%	35.1%	37.9%	38.3%	73.9%
	School Super.	48.5%	54.5%	69.4%	39.8%	36.7%	39.9%	41.4%	77.6%
2016 GEN	U.S. President	60.6%	66.9%	77.5%	49.6%	36.7%	34.2%	56.3%	83.2%
	U.S. Senator	50.6%	57.2%	66.9%	44.3%	33.4%	30.8%	43.5%	73.6%
2018 GEN	Governor	64.0%	68.8%	79.3%	54.7%	36.2%	32.6%	57.9%	84.3%
	Lt. Governor	62.2%	67.1%	77.9%	53.5%	35.4%	32.4%	55.7%	82.5%
	Sec. of State	63.0%	68.3%	79.0%	54.1%	36.4%	35.5%	56.7%	83.6%
	Attorney General	61.5%	66.5%	76.7%	53.5%	36.3%	33.5%	54.7%	81.5%
	Com. Agriculture	59.2%	63.3%	73.2%	51.7%	34.6%	31.4%	51.9%	78.4%
	Com. Insurance	61.5%	66.6%	77.2%	53.5%	35.4%	32.2%	54.5%	82.1%
	Com. Labor	59.8%	64.7%	75.1%	52.4%	35.2%	32.3%	52.9%	80.2%
	School Super.	59.3%	63.2%	72.7%	51.6%	34.8%	31.8%	51.5%	78.4%
	Public Serv. Com. 3	62.5%	68.0%	78.4%	54.2%	36.4%	33.8%	55.7%	83.1%
	Public Serv. Com. 5	61.6%	66.9%	77.2%	53.7%	35.8%	32.8%	54.4%	82.1%
2018 RUN	Sec. of State	62.9%	68.4%	83.4%	48.8%	30.1%	32.5%	56.8%	87.3%
	Public Serv. Com. 3	63.2%	69.3%	83.7%	49.7%	31.1%	31.9%	57.3%	87.5%
2020 GEN	U.S. President	66.6%	71.1%	80.5%	56.4%	36.7%	33.5%	61.7%	84.8%
	U.S. Senator	63.6%	68.3%	78.0%	55.7%	36.4%	32.8%	57.4%	82.8%
	Public Serv. Com. 1	61.8%	66.7%	76.5%	54.5%	35.7%	32.7%	55.0%	81.5%
	Public Serv. Com. 4	62.2%	67.2%	76.8%	55.0%	36.0%	32.9%	55.6%	81.8%
2021 RUN	U.S. Senator (Perdue)	63.7%	68.4%	78.2%	57.7%	37.9%	34.4%	56.6%	82.9%
	U.S. Senator (Loeffler)	64.8%	69.5%	79.0%	58.2%	38.3%	34.7%	58.0%	83.8%
	Public Serv. Com. 4	62.2%	66.9%	77.0%	56.5%	37.2%	33.6%	55.0%	81.8%
2022 GEN	U.S. Senator	68.8%	73.4%	83.8%	58.2%	37.3%	32.1%	62.5%	87.1%
	Governor	61.9%	66.8%	78.3%	52.5%	34.0%	29.6%	54.4%	82.4%
	Lt. Governor	64.8%	69.8%	80.9%	54.5%	34.4%	29.6%	57.6%	84.5%
	Sec. of State	59.3%	64.2%	75.6%	52.1%	33.7%	29.5%	51.8%	79.9%
	Attorney General	64.3%	68.5%	79.6%	54.1%	35.0%	30.7%	57.0%	83.4%
	Com. Agriculture	61.3%	65.8%	77.1%	52.6%	33.4%	29.3%	53.3%	81.3%
	Com. Insurance	60.8%	65.3%	76.6%	52.4%	33.9%	29.8%	52.9%	80.7%
	Com. Labor	62.7%	67.8%	79.2%	53.2%	34.1%	29.7%	54.8%	83.0%
	School Super.	61.5%	64.8%	75.4%	52.1%	34.1%	29.5%	53.3%	79.9%
2022 RUN	U.S. Senator	70.3%	75.2%	85.3%	60.1%	37.5%	33.0%	64.5%	88.2%

Table 6: Election Results in the Selected Districts — Remedial House Map — Vote Share of Black-Preferred Candidates

		HD 40	HD 81	HD 82	HD 101	HD 134	HD 149	SD 6	SD 42
2012 GEN	U.S. President	30.8%	22.6%	32.4%	58.3%	35.6%	63.7%	26.9%	34.9%
2014 GEN	U.S. Senator	31.9%	24.7%	32.0%	60.5%	35.1%	63.3%	27.2%	34.8%
	Governor	32.6%	25.6%	31.8%	58.9%	36.4%	63.0%	27.2%	35.0%
	Lt. Governor	28.5%	21.7%	28.0%	54.3%	31.3%	58.9%	23.2%	31.3%
	Sec. of State	29.2%	22.1%	28.7%	54.3%	32.4%	60.0%	23.9%	31.9%
	Attorney General	30.0%	24.5%	29.7%	55.1%	32.9%	60.5%	24.8%	32.9%
	Com. Agriculture	28.8%	22.1%	28.0%	52.6%	31.4%	59.0%	23.0%	31.2%
	Com. Insurance	29.7%	22.5%	29.0%	55.3%	32.4%	60.7%	24.0%	32.1%
	Com. Labor	30.0%	22.7%	29.1%	54.4%	32.9%	60.4%	24.4%	32.4%
	School Super.	31.2%	23.7%	30.5%	58.1%	34.8%	62.0%	25.9%	33.7%
2016 GEN	U.S. President	31.3%	25.5%	33.3%	69.9%	32.4%	61.0%	26.6%	35.1%
	U.S. Senator	29.5%	23.7%	29.6%	60.0%	29.7%	56.6%	24.0%	33.0%
2018 GEN	Governor	38.4%	29.8%	34.6%	71.6%	32.5%	60.6%	27.3%	38.2%
	Lt. Governor	38.0%	29.7%	33.8%	70.0%	31.8%	59.9%	26.9%	37.8%
	Sec. of State	38.4%	29.9%	34.6%	71.1%	33.8%	62.2%	27.5%	38.5%
	Attorney General	38.4%	30.2%	34.6%	69.3%	33.0%	59.9%	27.5%	38.4%
	Com. Agriculture	37.2%	28.6%	32.9%	66.0%	31.4%	58.3%	25.8%	36.7%
	Com. Insurance	37.9%	29.4%	33.7%	69.5%	32.1%	59.8%	26.6%	37.8%
	Com. Labor	37.6%	29.0%	33.3%	67.4%	32.0%	59.4%	26.1%	37.2%
	School Super.	37.1%	28.4%	32.6%	65.7%	31.7%	59.1%	25.6%	36.8%
	Public Serv. Com. 3	38.8%	29.9%	34.7%	70.8%	33.0%	60.8%	27.3%	38.4%
	Public Serv. Com. 5	38.0%	29.6%	33.9%	69.6%	32.4%	60.3%	26.7%	37.9%
2018 RUN	Sec. of State	30.6%	28.4%	30.2%	72.8%	31.3%	60.9%	24.9%	33.6%
	Public Serv. Com. 3	31.9%	29.3%	31.3%	73.8%	31.7%	60.0%	26.3%	34.6%
2020 GEN	U.S. President	38.4%	35.2%	36.8%	74.0%	32.8%	60.0%	29.4%	40.7%
	U.S. Senator	38.1%	34.7%	35.7%	70.9%	32.1%	59.1%	28.4%	40.2%
	Public Serv. Com. 1	36.9%	33.6%	34.6%	69.4%	31.3%	59.1%	27.0%	39.4%
	Public Serv. Com. 4	37.5%	34.0%	34.9%	69.9%	31.9%	59.3%	27.5%	39.6%
2021 RUN	U.S. Senator (Perdue)	40.2%	36.9%	37.0%	70.8%	34.0%	61.4%	29.4%	41.9%
	U.S. Senator (Loeffler)	40.5%	37.2%	37.3%	71.8%	34.3%	61.6%	29.9%	42.2%
	Public Serv. Com. 4	39.0%	35.8%	35.9%	69.4%	33.2%	60.7%	28.4%	41.1%
2022 GEN	U.S. Senator	41.7%	41.3%	38.7%	75.8%	32.3%	59.1%	29.6%	43.2%
	Governor	38.2%	37.9%	34.5%	69.2%	29.2%	56.2%	25.5%	39.9%
	Lt. Governor	39.3%	38.8%	35.7%	72.3%	29.5%	56.1%	26.7%	40.7%
	Sec. of State	37.9%	37.7%	34.0%	66.6%	28.6%	55.0%	25.1%	39.5%
	Attorney General	39.1%	38.9%	35.7%	70.9%	29.9%	57.0%	26.6%	40.8%
	Com. Agriculture	37.9%	37.7%	33.8%	68.4%	28.6%	56.0%	25.0%	39.4%
	Com. Insurance	38.4%	37.8%	34.4%	67.9%	29.2%	56.0%	25.4%	39.7%
	Com. Labor	38.6%	38.2%	34.7%	70.4%	29.2%	56.7%	25.6%	40.1%
2022 RUN	School Super.	38.3%	37.8%	34.4%	67.4%	29.1%	55.8%	25.2%	39.6%
	U.S. Senator	42.3%	42.3%	38.9%	77.6%	32.4%	59.5%	29.9%	43.6%