



SEAN P. TRENDE
1146 Elderberry Loop
Delaware, OH 43015
strende@realclearpolitics.com

EDUCATION

Ph.D., The Ohio State University, Political Science, expected 2022.

M.A.S. (Master of Applied Statistics), The Ohio State University, 2019.

J.D., Duke University School of Law, *cum laude*, 2001; Duke Law Journal, Research Editor.

M.A., Duke University, *cum laude*, Political Science, 2001. Thesis titled *The Making of an Ideological Court: Application of Non-parametric Scaling Techniques to Explain Supreme Court Voting Patterns from 1900-1941*, June 2001.

B.A., Yale University, with distinction, History and Political Science, 1995.

PROFESSIONAL EXPERIENCE

Law Clerk, Hon. Deanell R. Tacha, U.S. Court of Appeals for the Tenth Circuit, 2001-02.

Associate, Kirkland & Ellis, LLP, Washington, DC, 2002-05.

Associate, Hunton & Williams, LLP, Richmond, Virginia, 2005-09.

Associate, David, Kamp & Frank, P.C., Newport News, Virginia, 2009-10.

Senior Elections Analyst, RealClearPolitics, 2009-present.

Columnist, Center for Politics Crystal Ball, 2014-17.

Gerald R. Ford Visiting Scholar, American Enterprise Institute, 2018-present.

BOOKS

Larry J. Sabato, ed., *The Blue Wave*, Ch. 14 (2019).

Larry J. Sabato, ed., *Trumped: The 2016 Election that Broke all the Rules* (2017).

Larry J. Sabato, ed., *The Surge: 2014's Big GOP Win and What It Means for the Next Presidential Election*, Ch. 12 (2015).

Larry J. Sabato, ed., *Barack Obama and the New America*, Ch. 12 (2013).

Barone, Kraushaar, McCutcheon & Trende, *The Almanac of American Politics 2014* (2013).

The Lost Majority: Why the Future of Government is up for Grabs – And Who Will Take It (2012).

INTERNATIONAL PRESENTATIONS AND EXPERIENCE

Panel Discussion, European External Action Service, Brussels, Belgium, *Likely Outcomes of 2012 American Elections*.

Selected by U.S. Embassies in Sweden, Spain, and Italy to discuss 2016 and 2018 elections to think tanks and universities in area (declined Italy due to teaching responsibilities).

Selected by EEAS to discuss 2018 elections in private session with European Ambassadors.

TEACHING

American Democracy and Mass Media, Ohio Wesleyan University, Spring 2018.

Introduction to American Politics, The Ohio State University, Autumn 2018, 2019, 2020, Spring 2018.

Political Participation and Voting Behavior, Spring 2020, Spring 2021.

REAL CLEAR POLITICS COLUMNS

Full archives available at http://www.realclearpolitics.com/authors/sean_trende/

Table 1: Polsby Popper Scores, Challenged Districts

Senate District	Polsby-Popper
24	0.08338671
12	0.11039358
22	0.11576815
21	0.12535881
47	0.12672714
23	0.13174410
33	0.14011260
42	0.17597259
25	0.18025296
7	0.18953082
9	0.23722401
31	0.25992728
27	0.30277797

Table 2: Reock Scores, Challenged Districts

Senate District	Reock
12	0.1378272
24	0.2222154
23	0.2359564
7	0.2428294
9	0.2636959
47	0.2678301
21	0.2875550
33	0.3413915
31	0.4103978
25	0.4402733
22	0.4485426
42	0.4551543
27	0.4577169

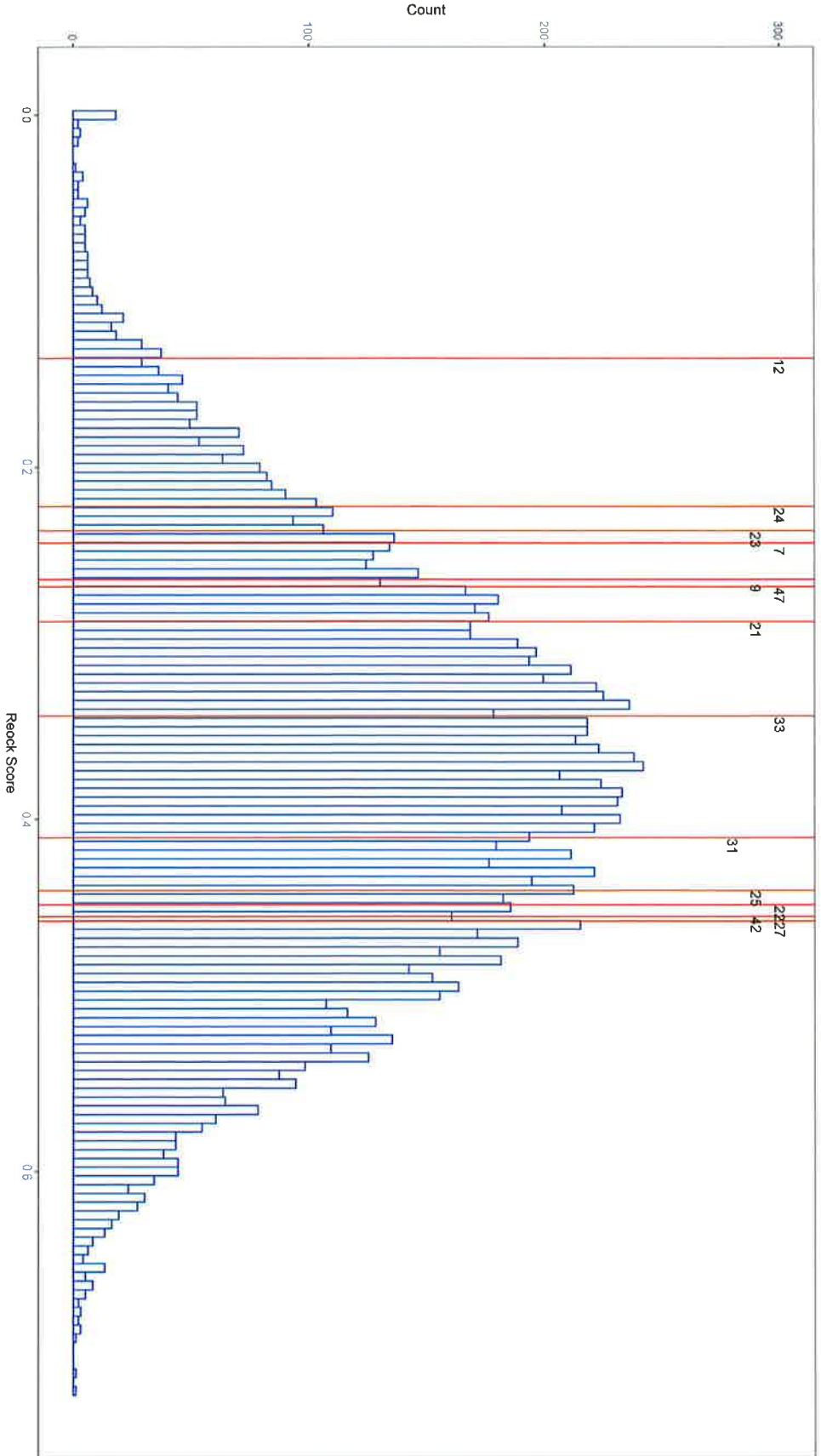
Table 3: Schwartzberg Scores, Challenged Districts

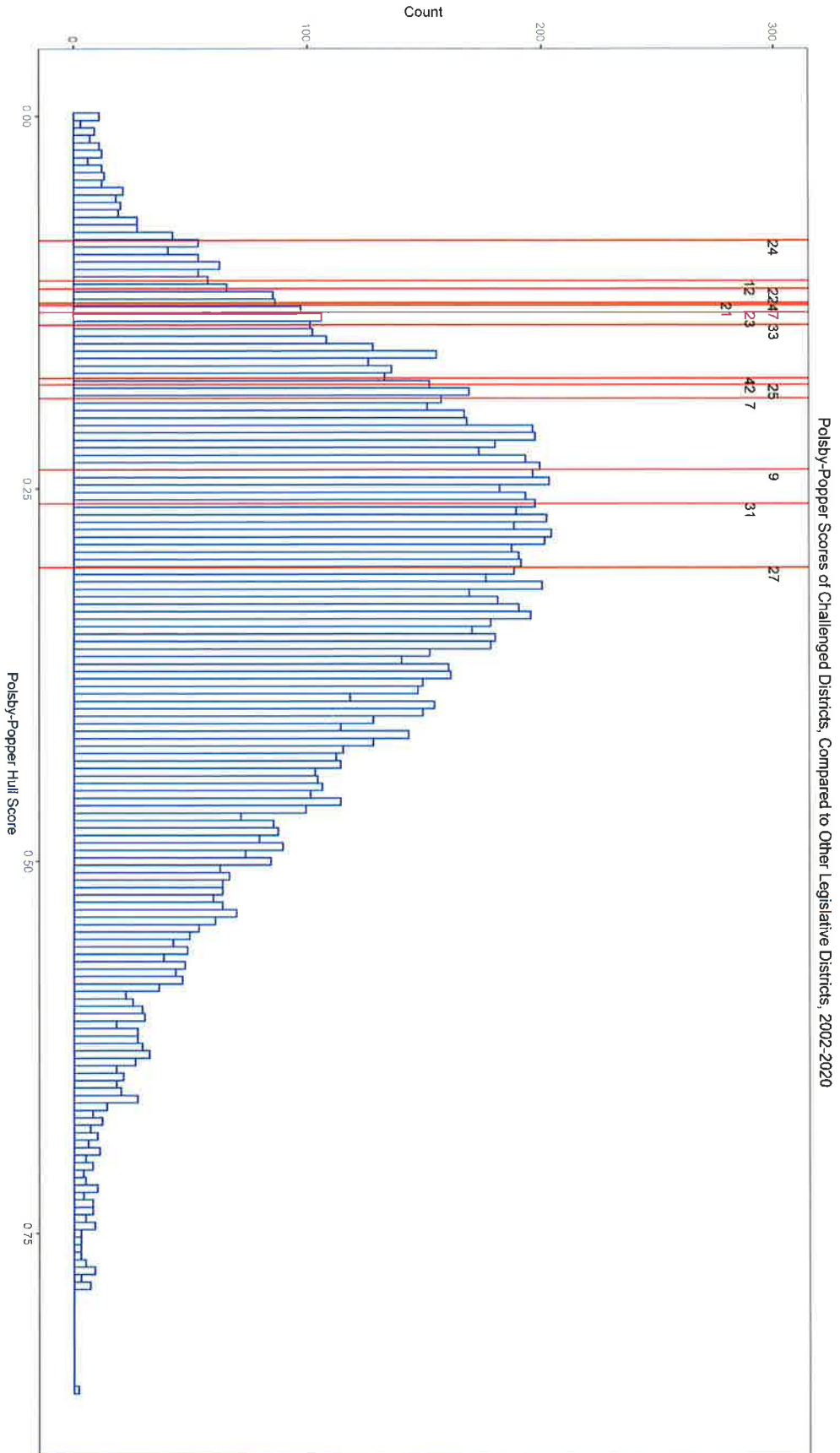
Senate District	Schwartzberg
24	0.2887676
12	0.3322553
22	0.3402472
21	0.3540605
47	0.3559876
23	0.3629657
33	0.3743162
42	0.4194909
25	0.4245621
7	0.4353514
9	0.4870565
31	0.5098306
27	0.5502526

Table 4: Convex Hull Scores, Challenged Districts

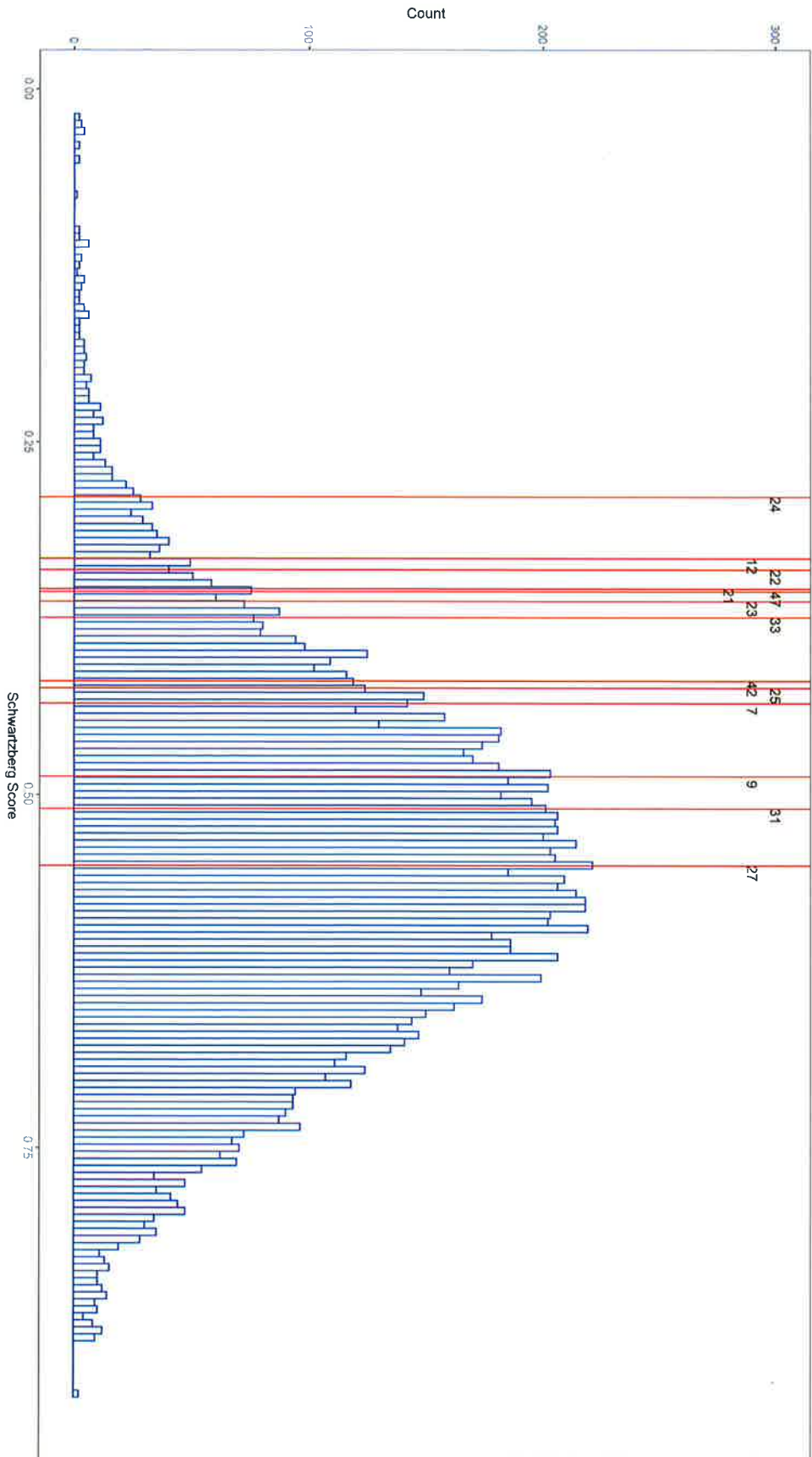
Senate District	Convex Hull
12	0.4335034
47	0.4725555
21	0.5046159
23	0.5488502
33	0.5677447
24	0.5706495
22	0.6393516
7	0.6472356
25	0.6721776
9	0.6738808
42	0.6940087
31	0.7176043
27	0.7943433

Reock Scores of Challenged Districts, Compared to Other Legislative Districts, 2002-2020





Schwartzberg Scores of Challenged Districts, Compared to Other Legislative Districts, 2002-2020



Convex Hull Scores of Challenged Districts, Compared to Other Legislative Districts, 2002-2020

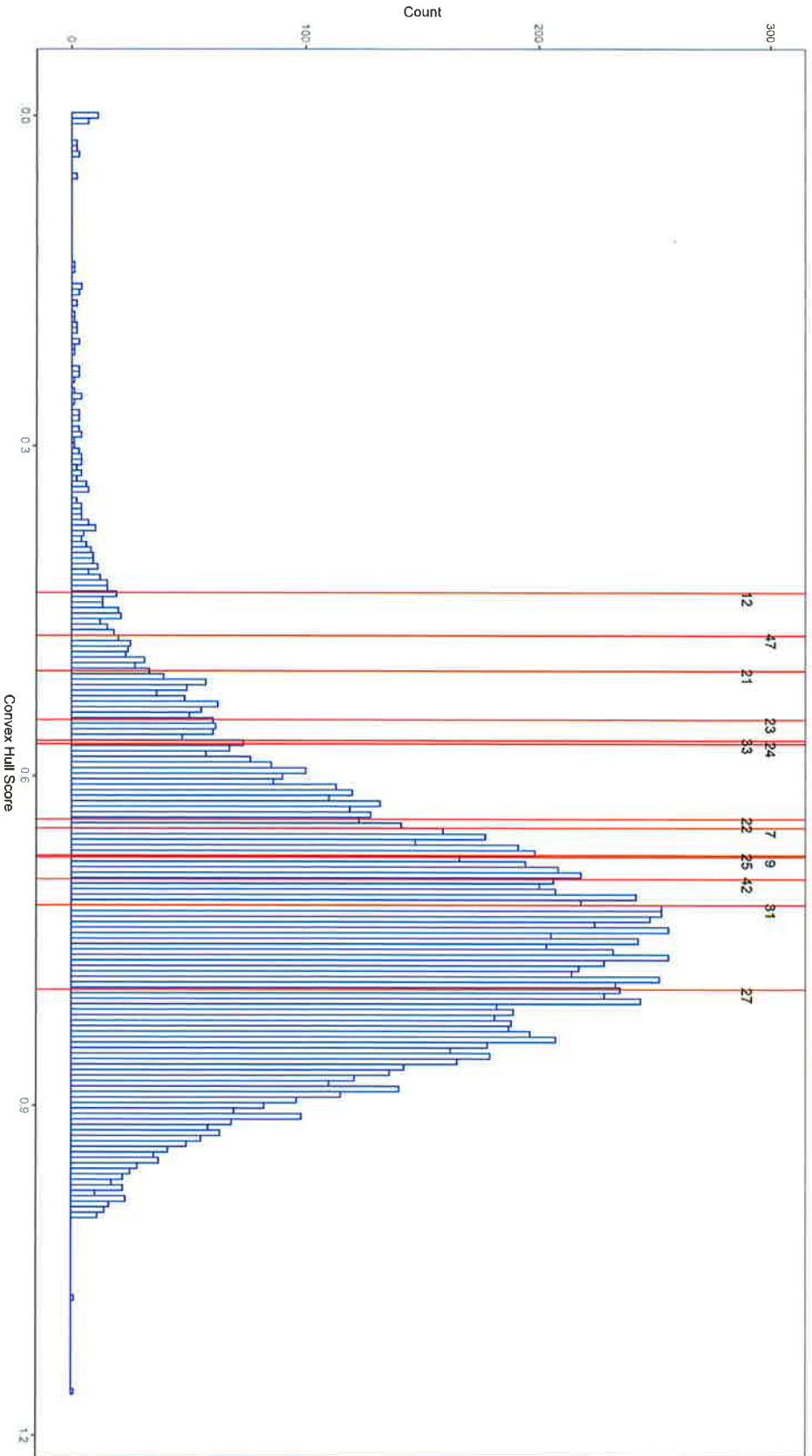
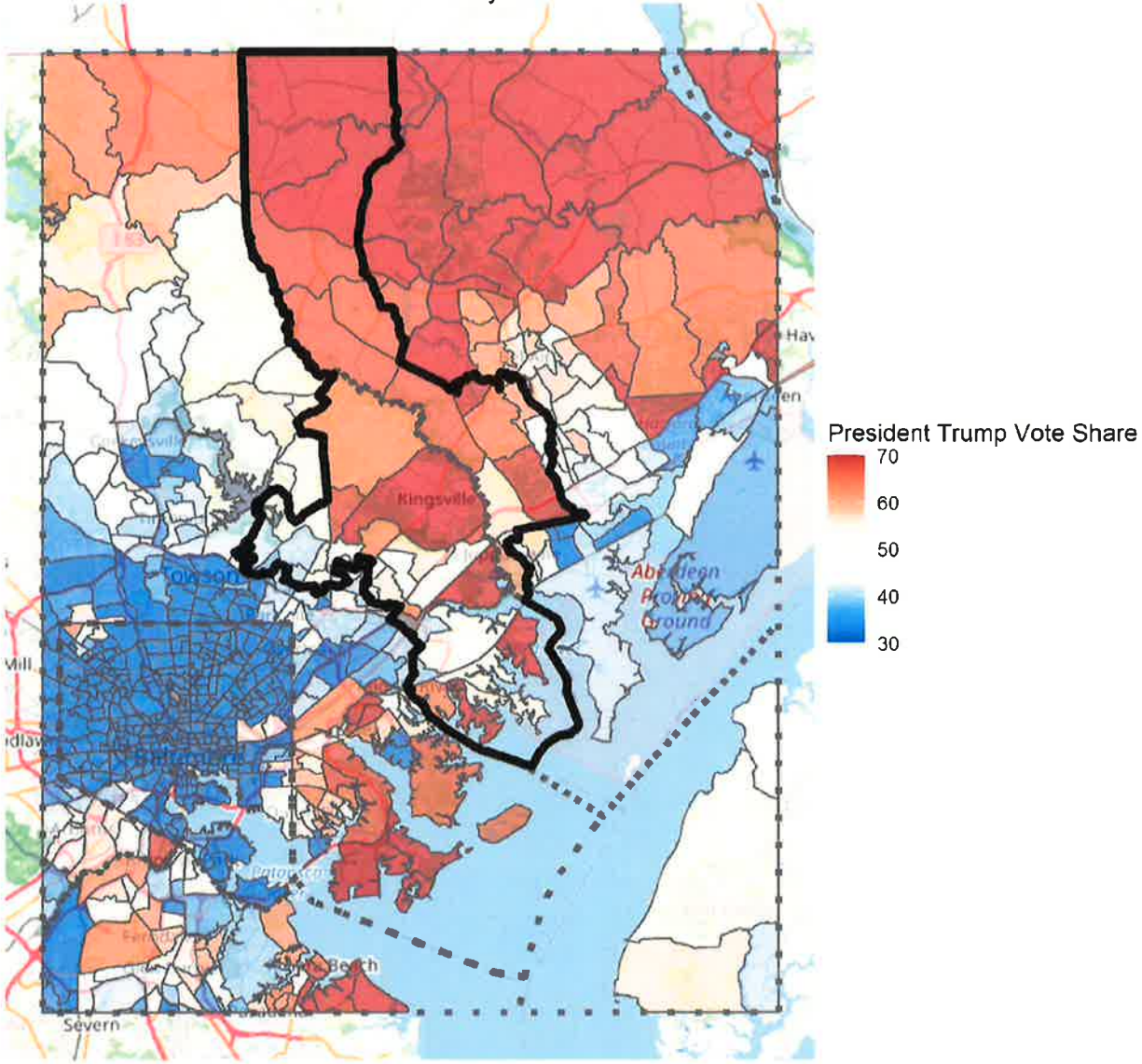


Table 5: Leg. Districts, 2002-2020, Ensemble Districts Scoring Worse Than Challenged Districts on All Metrics

District	Percent Worse on All Metrics	Number Worse (of 13,473)
7	6.06%	817
9	9.90%	1334
12	0.71%	95
21	2.41%	325
22	4.12%	555
23	2.82%	380
24	1.08%	145
25	13.12%	1768
27	43.56%	5869
31	27.58%	3716
33	4.71%	635
42	13.22%	1781
47	1.95%	263

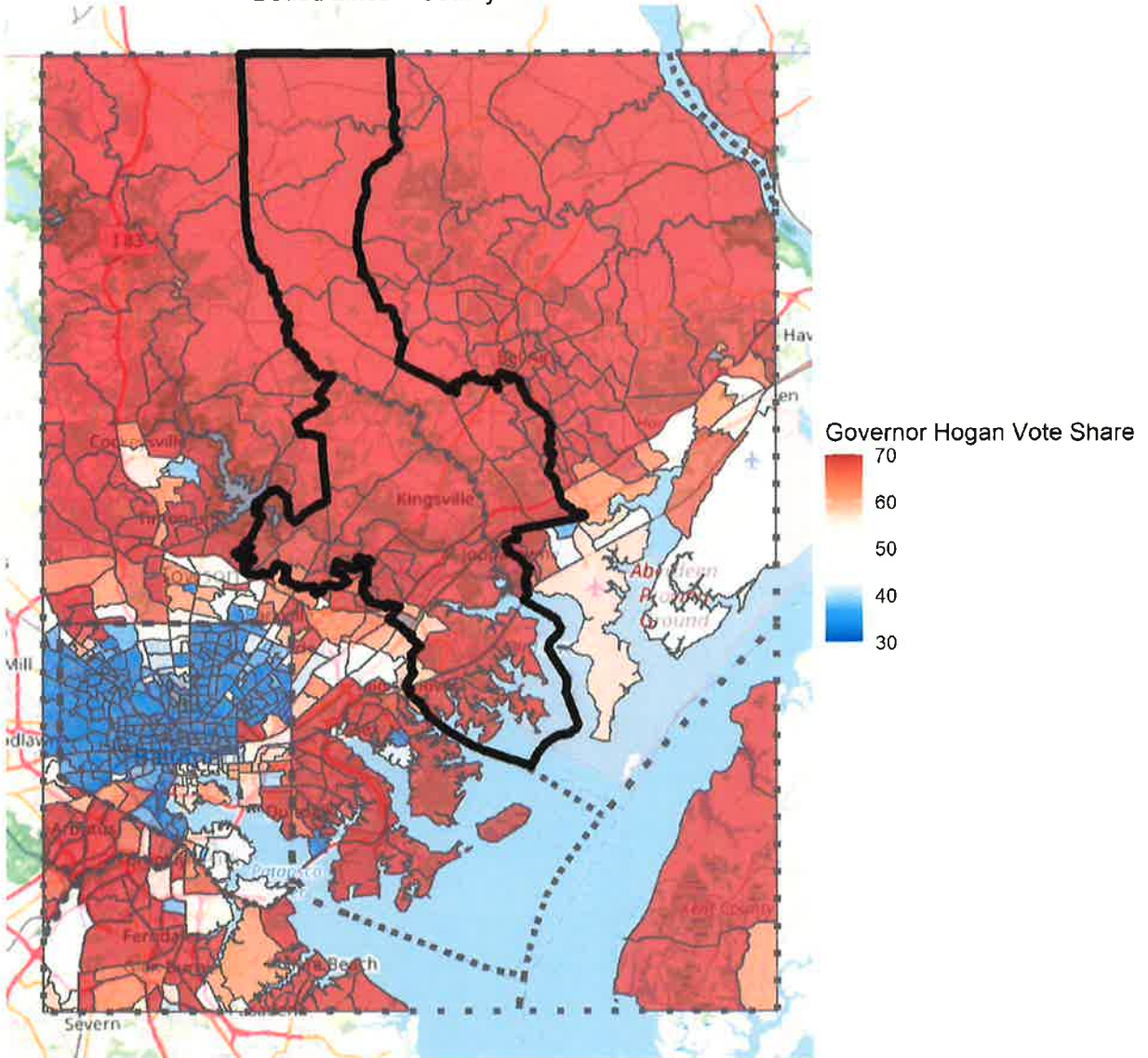
7th District, President Trump Share, 2020

Dotted Lines = County Lines

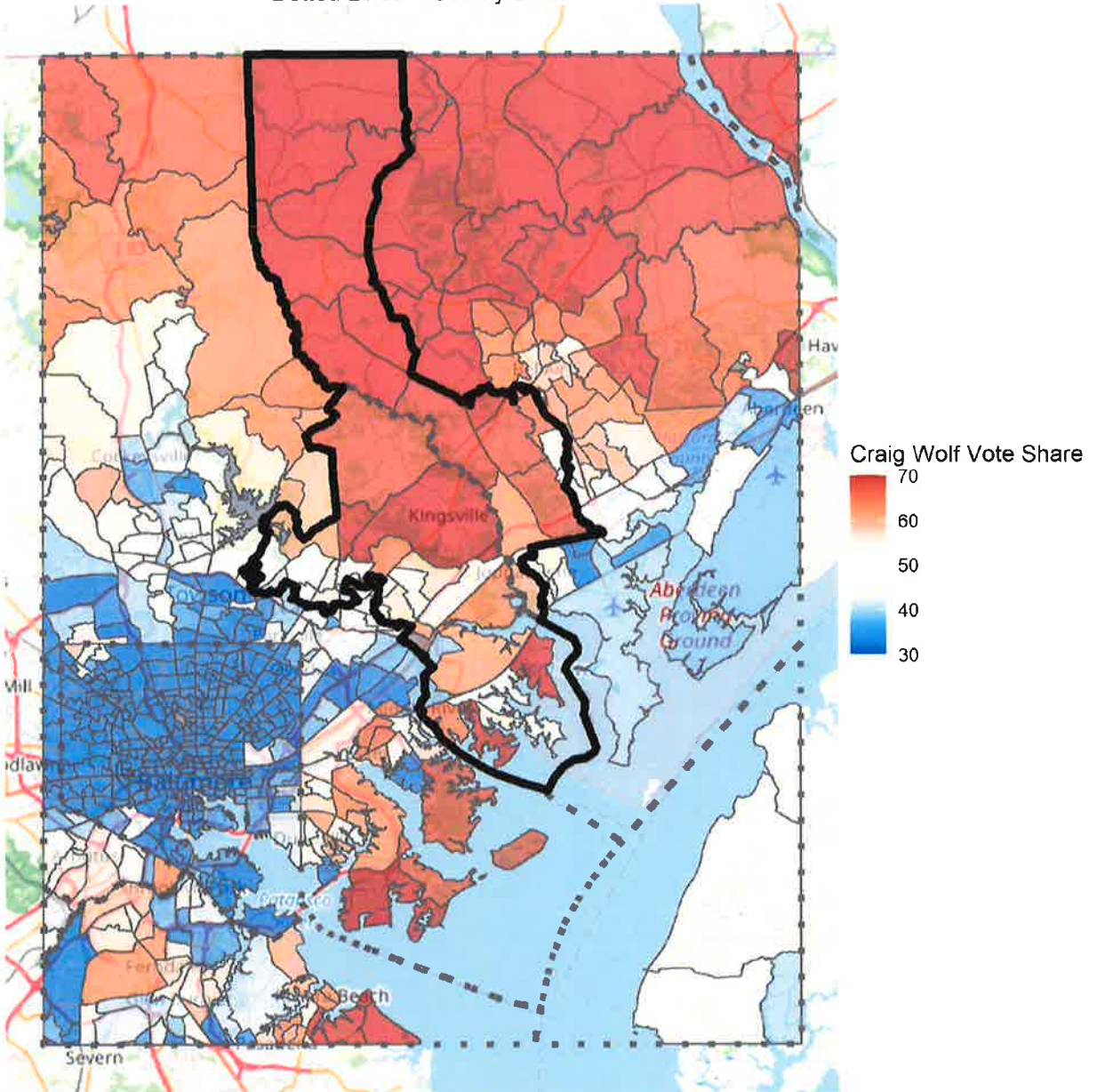


7th District, Governor Hogan Share, 2018

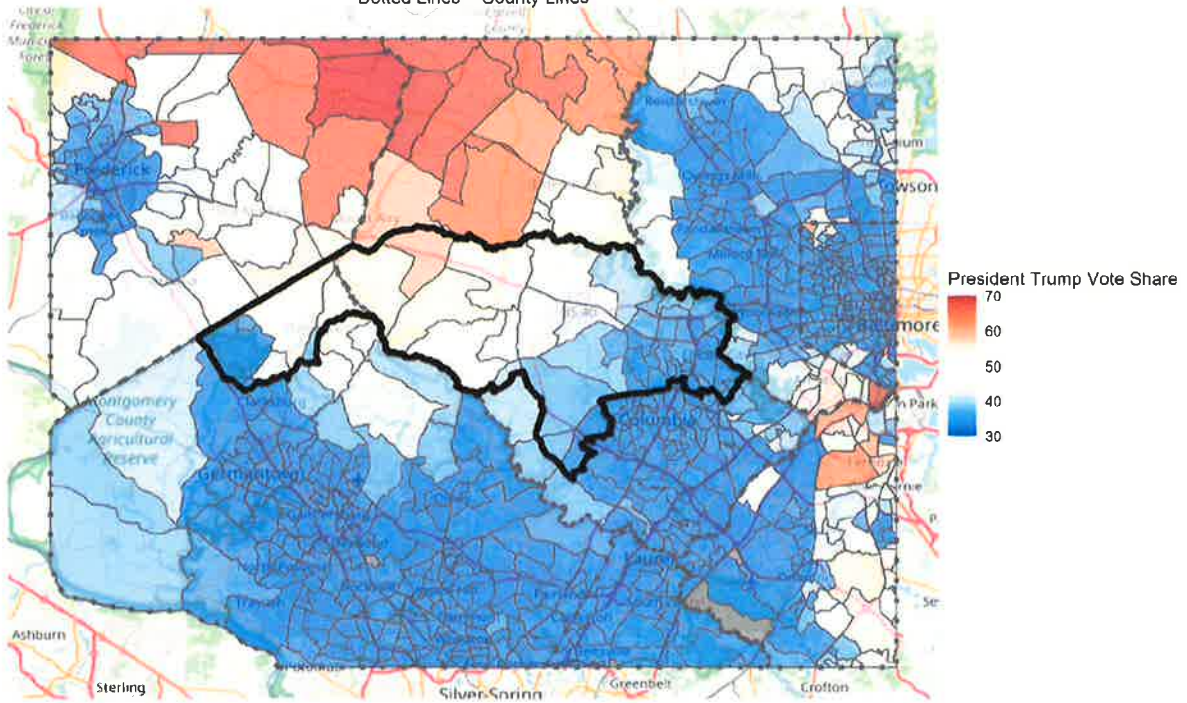
Dotted Lines = County Lines



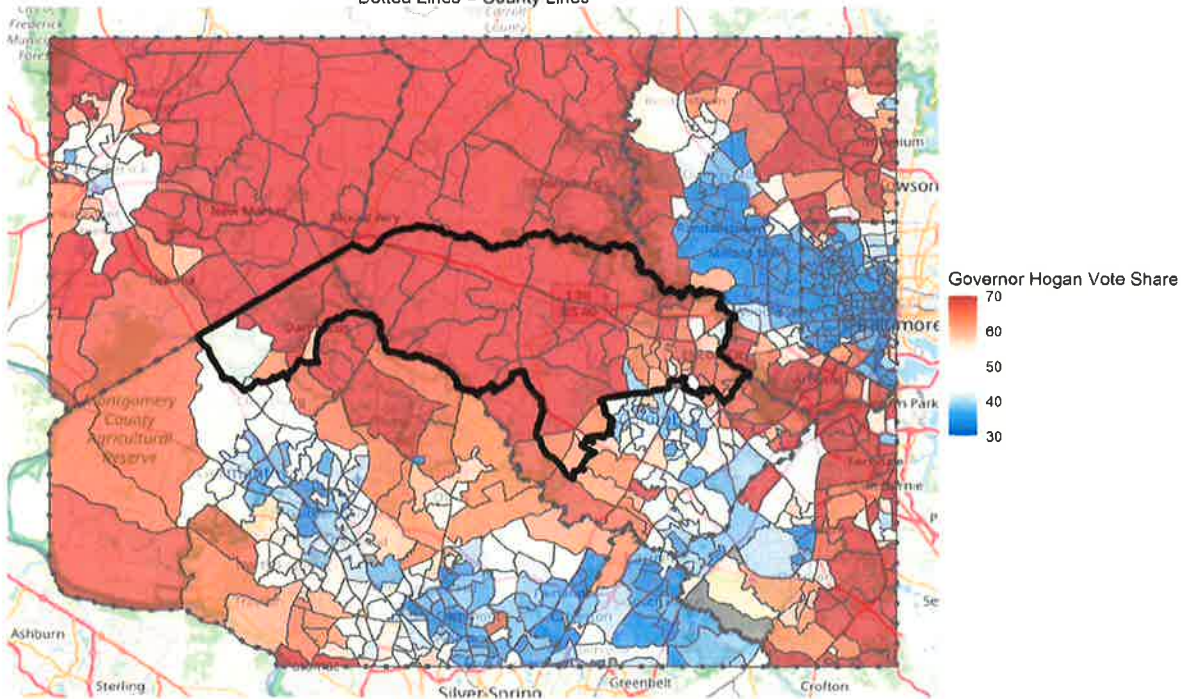
7th District, Craig Wolf Share, 2018
Dotted Lines = County Lines



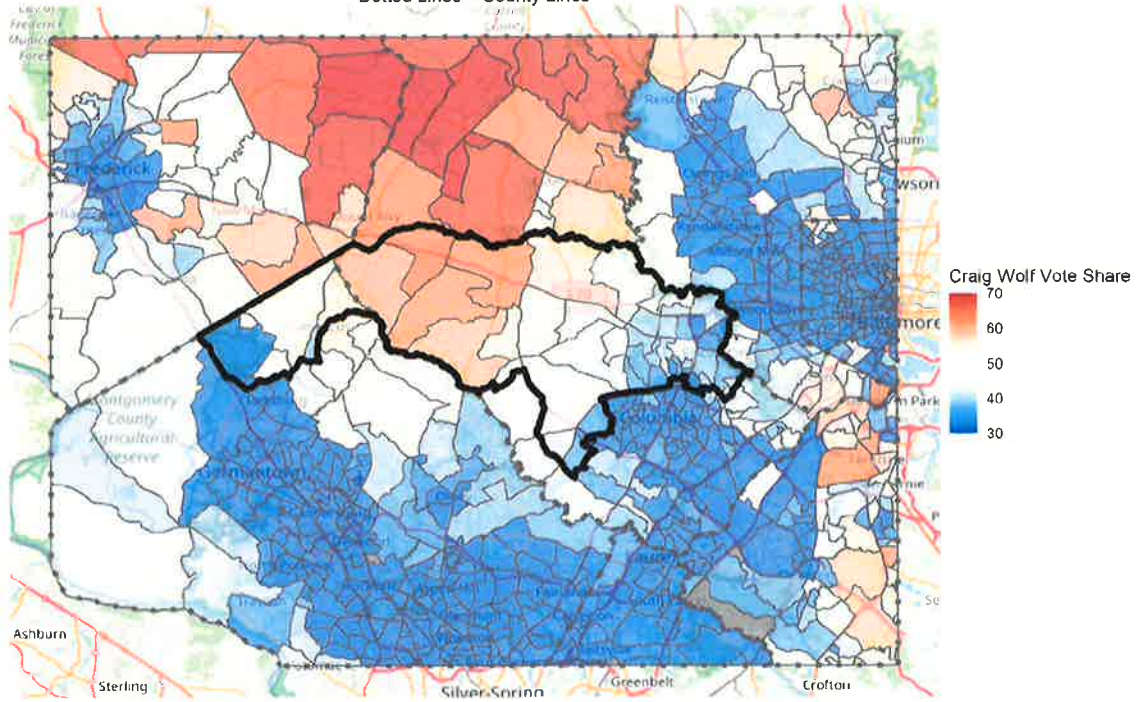
9th District, President Trump Share, 2020
Dotted Lines = County Lines



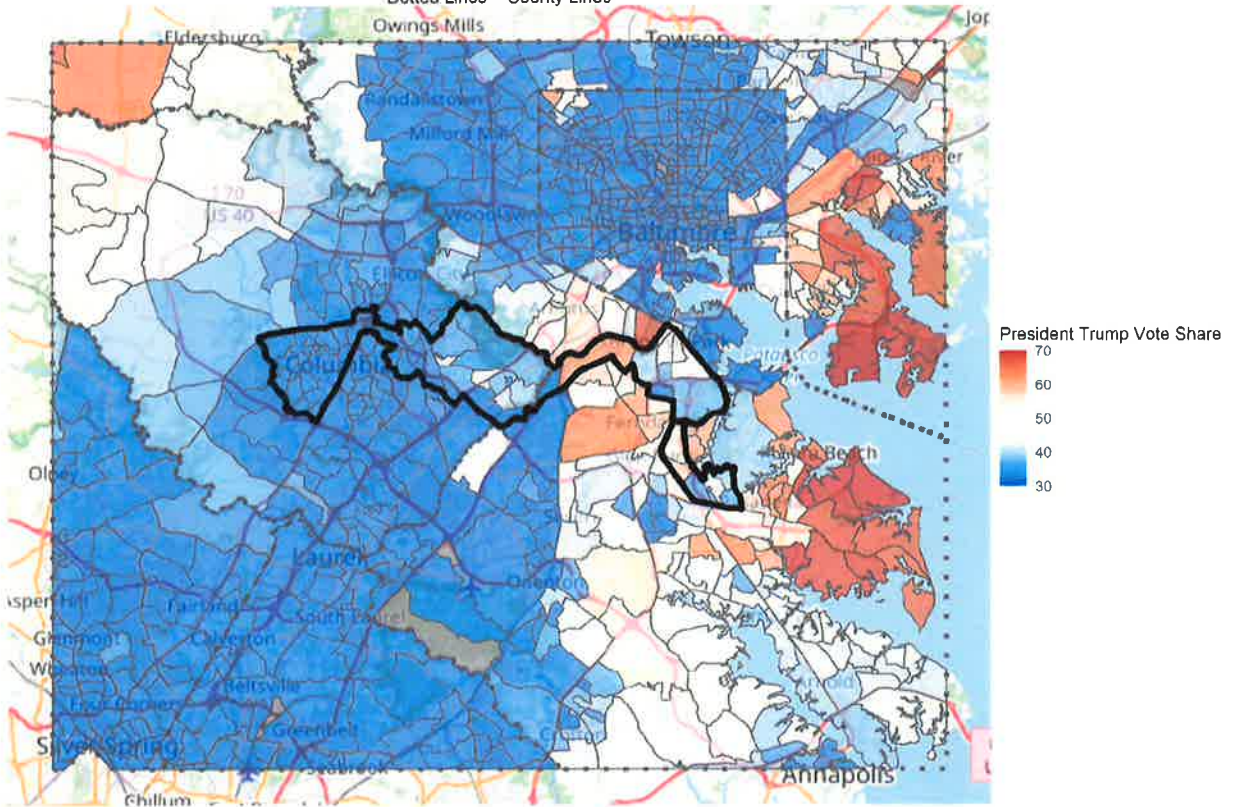
9th District, Governor Hogan Share, 2018
Dotted Lines = County Lines



9th District, Craig Wolf Share, 2018
Dotted Lines = County Lines

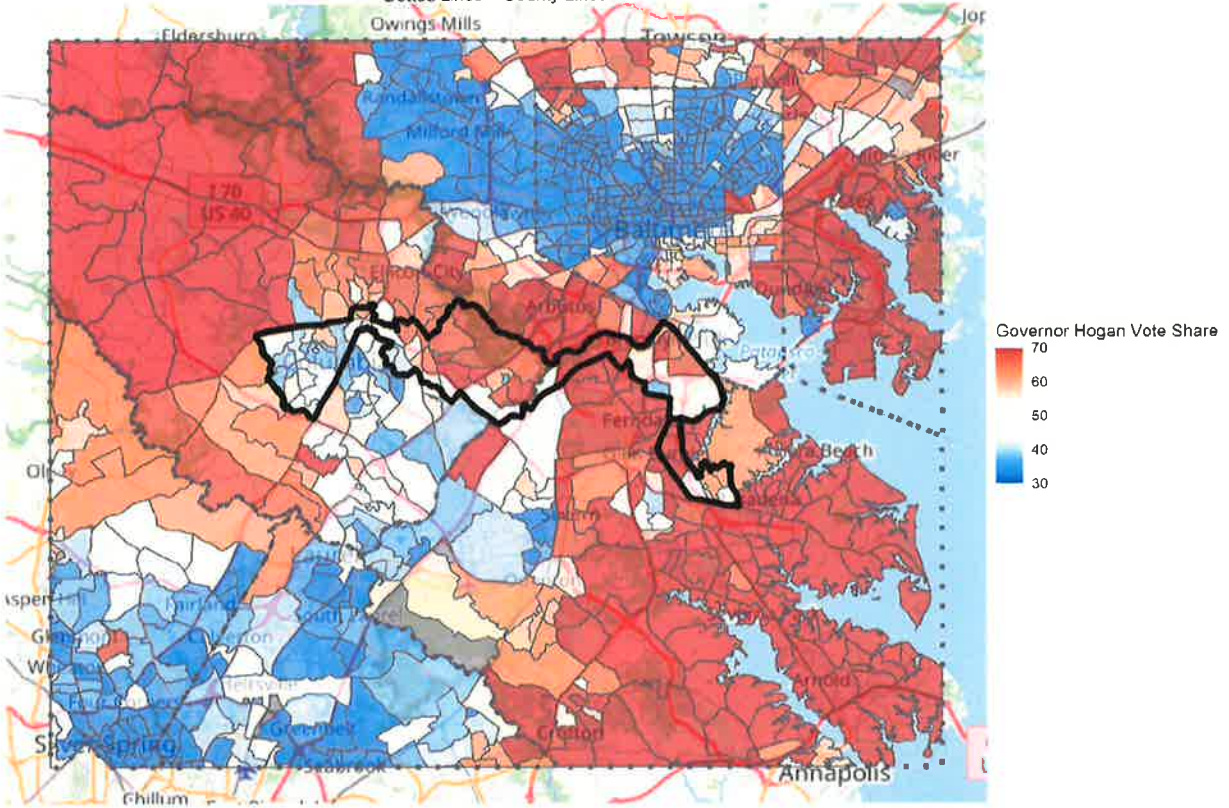


12th District, President Trump Share, 2020
Dotted Lines = County Lines



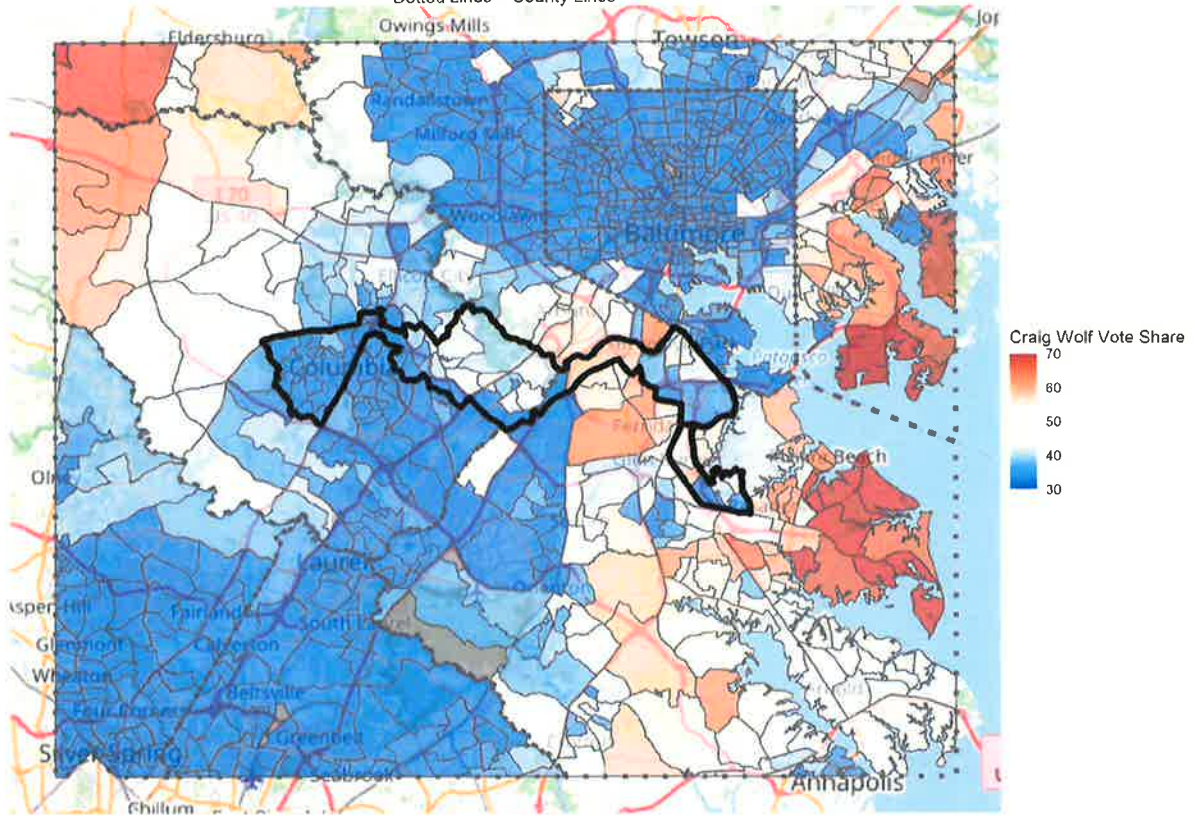
12th District, Governor Hogan Share, 2018

Dotted Lines = County Lines

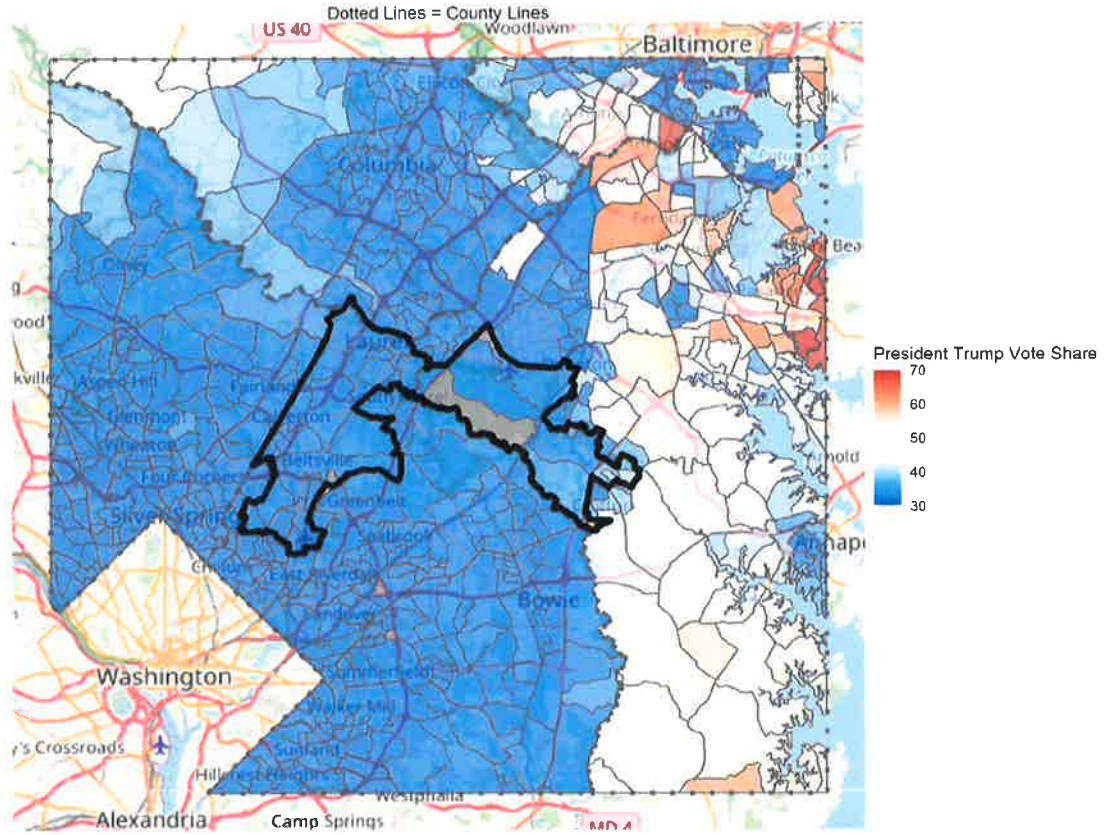


12th District, Craig Wolf Share, 2018

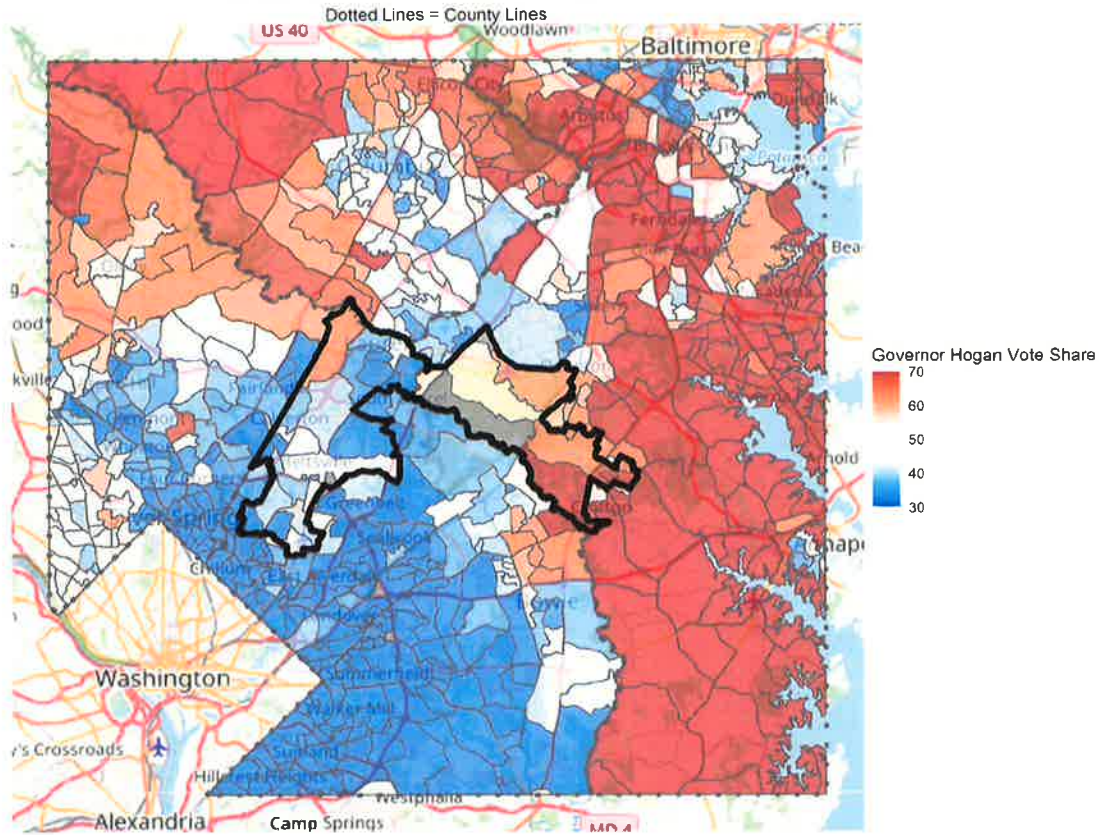
Dotted Lines = County Lines



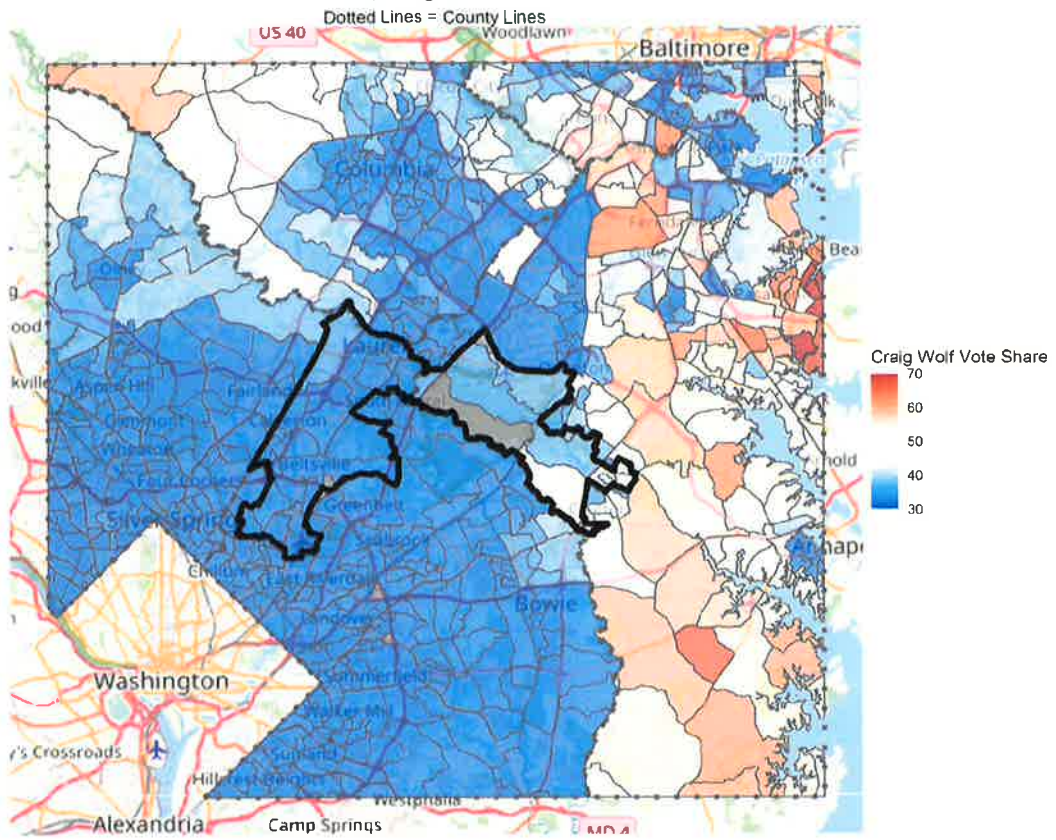
21st District, President Trump Share, 2020



21st District, Governor Hogan Share, 2018

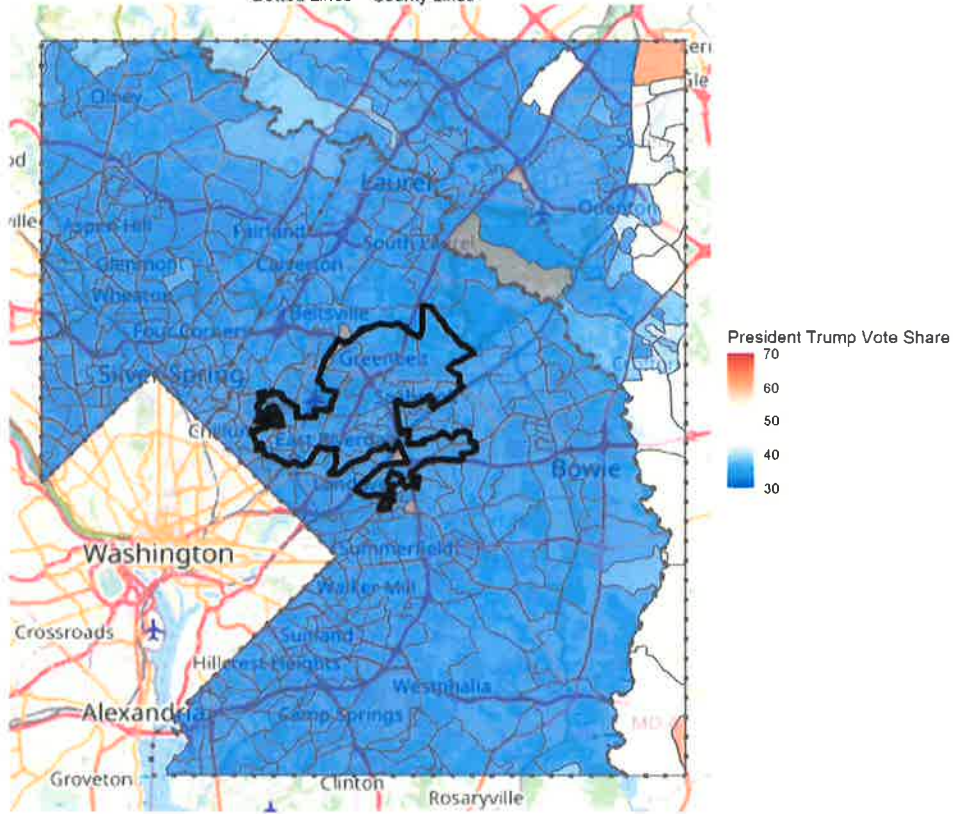


21st District, Craig Wolf Share, 2018

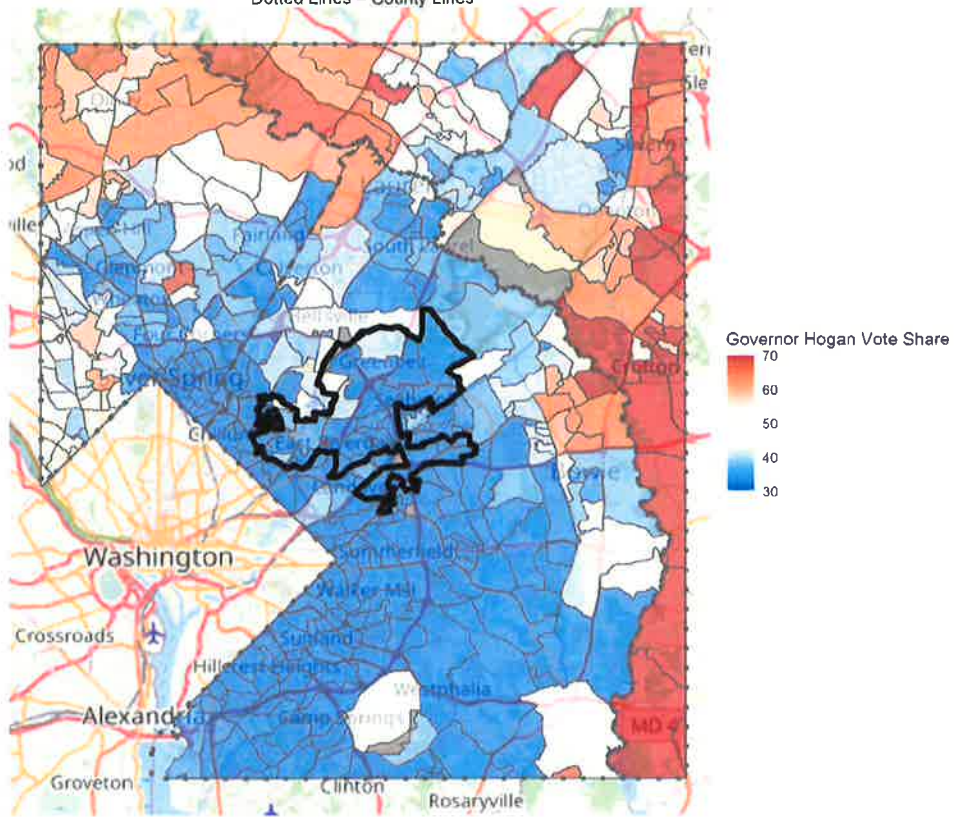


22nd District, President Trump Share, 2020

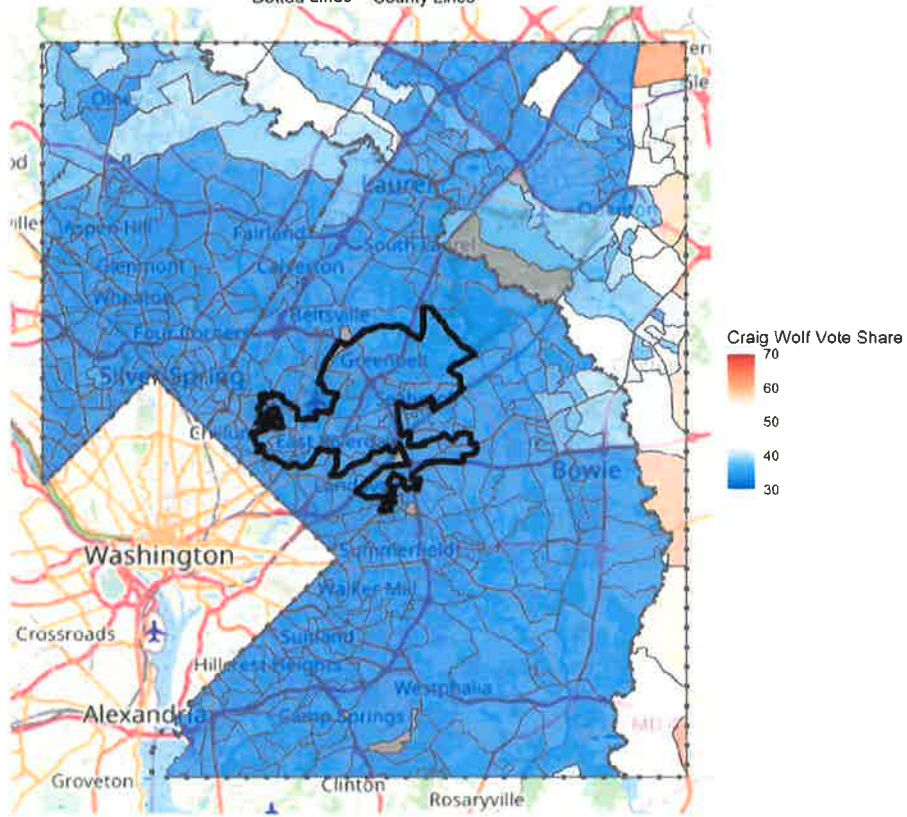
Dotted Lines = County Lines



22nd District, Governor Hogan Share, 2018
Dotted Lines = County Lines

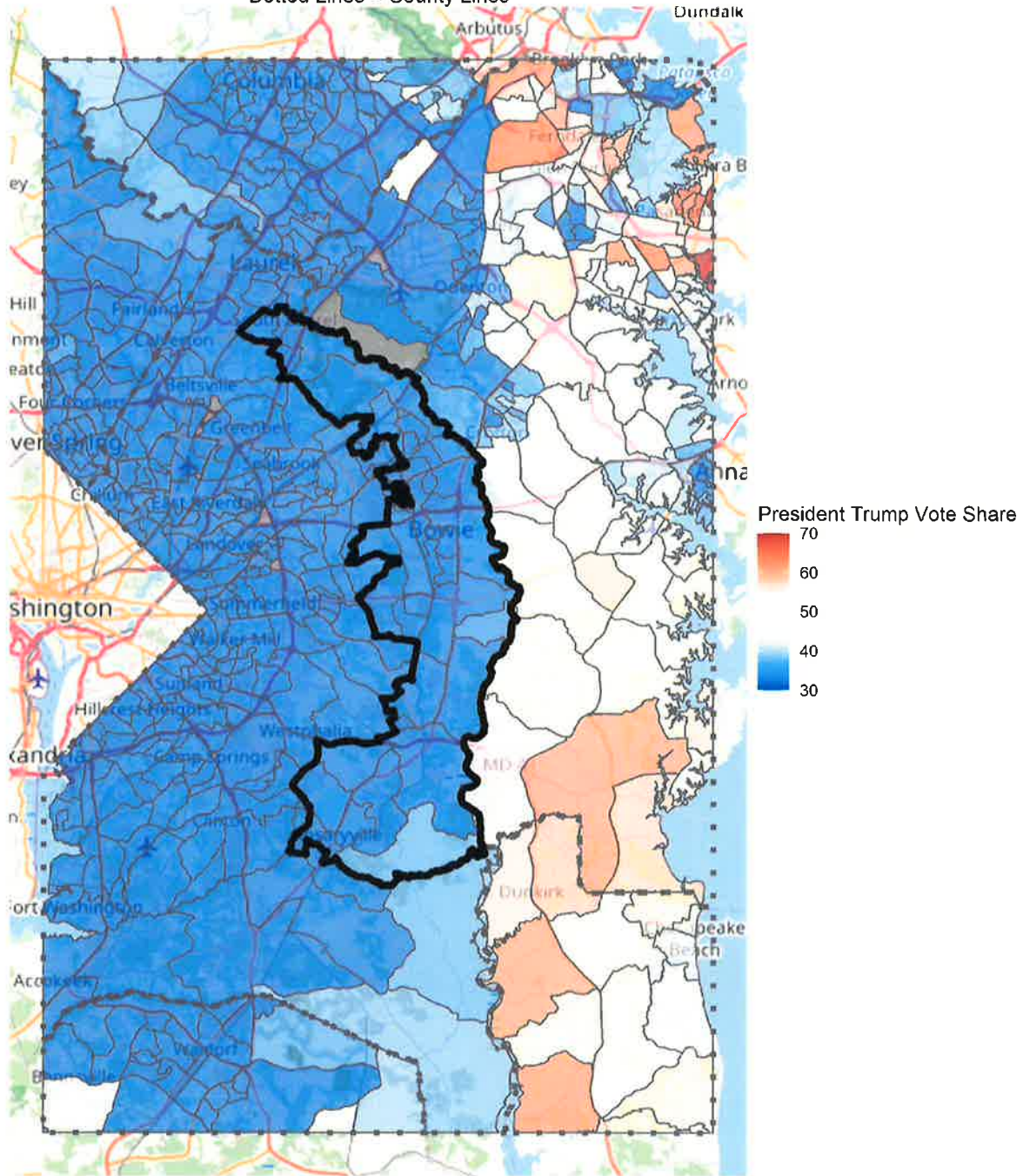


22nd District, Craig Wolf Share, 2018
Dotted Lines = County Lines



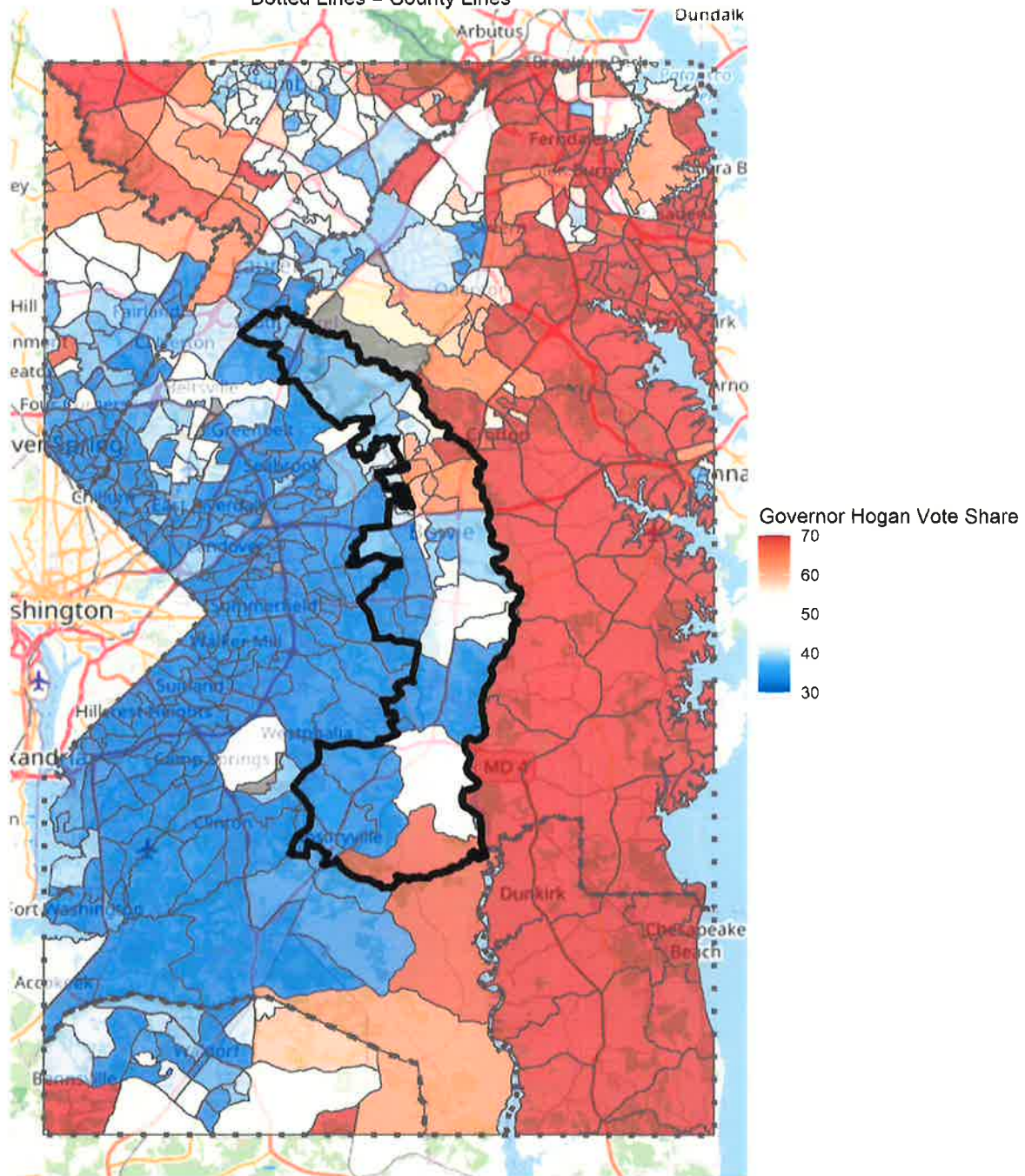
23rd District, President Trump Share, 2020

Dotted Lines = County Lines



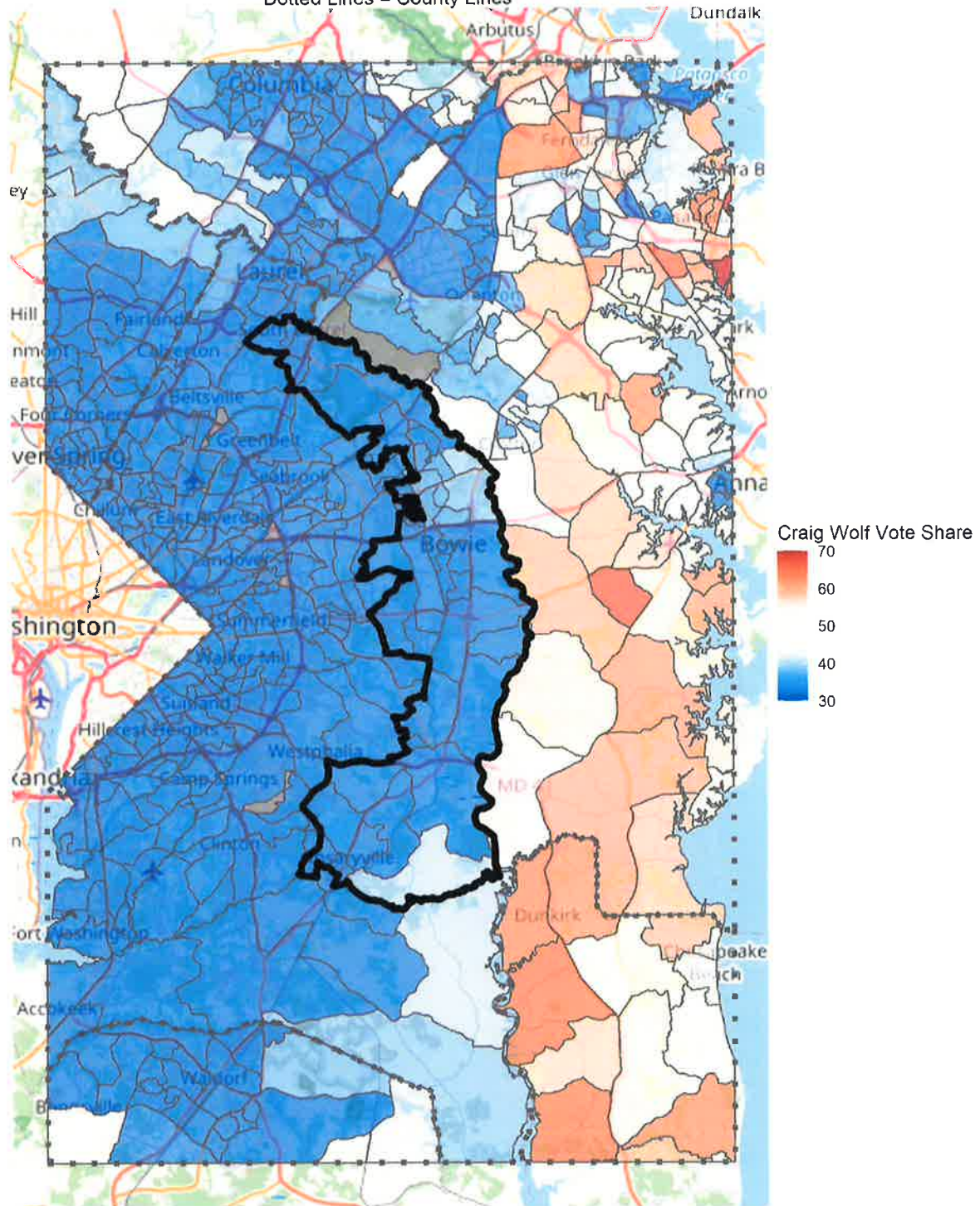
23rd District, Governor Hogan Share, 2018

Dotted Lines = County Lines



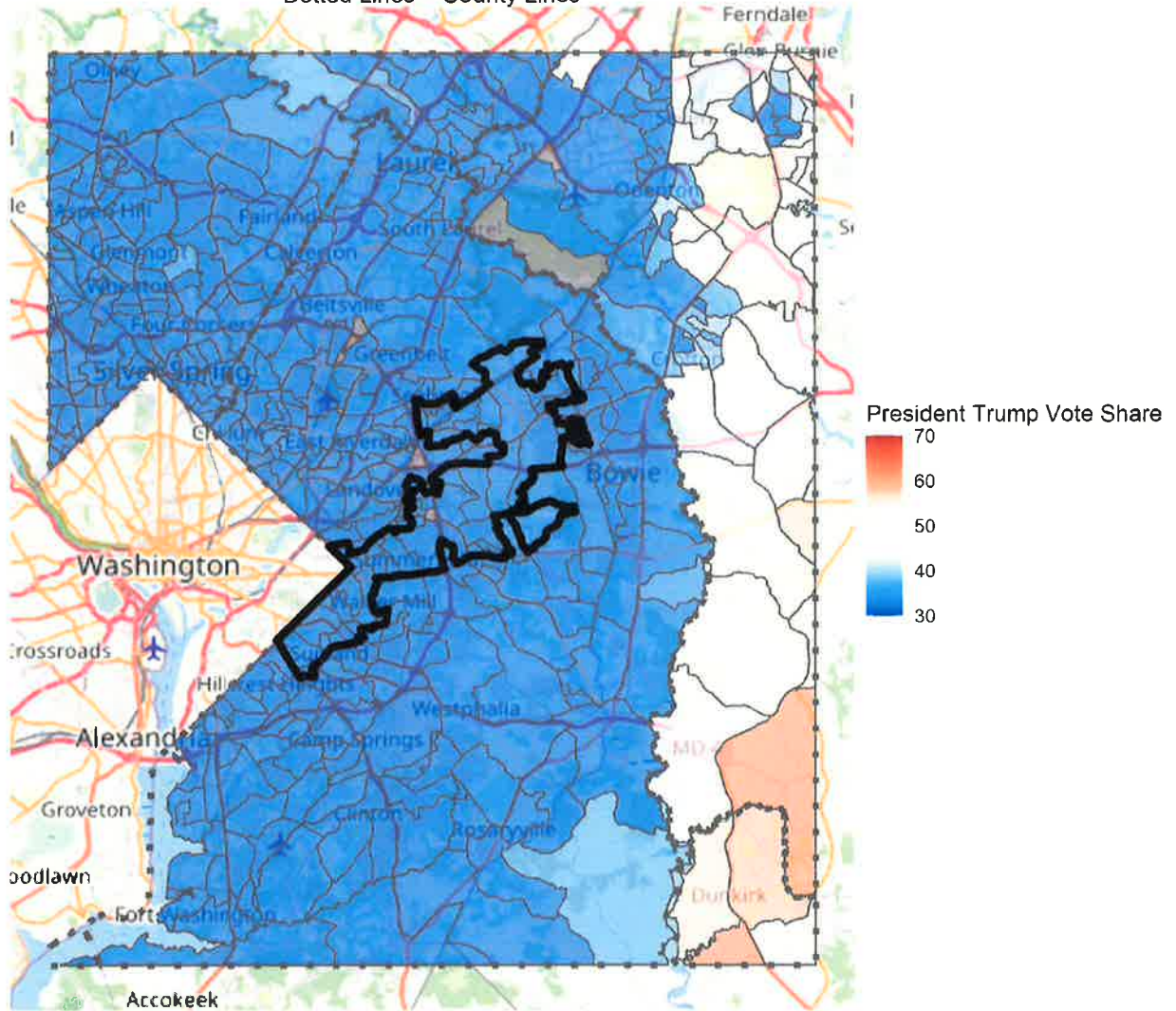
23rd District, Craig Wolf Share, 2018

Dotted Lines = County Lines



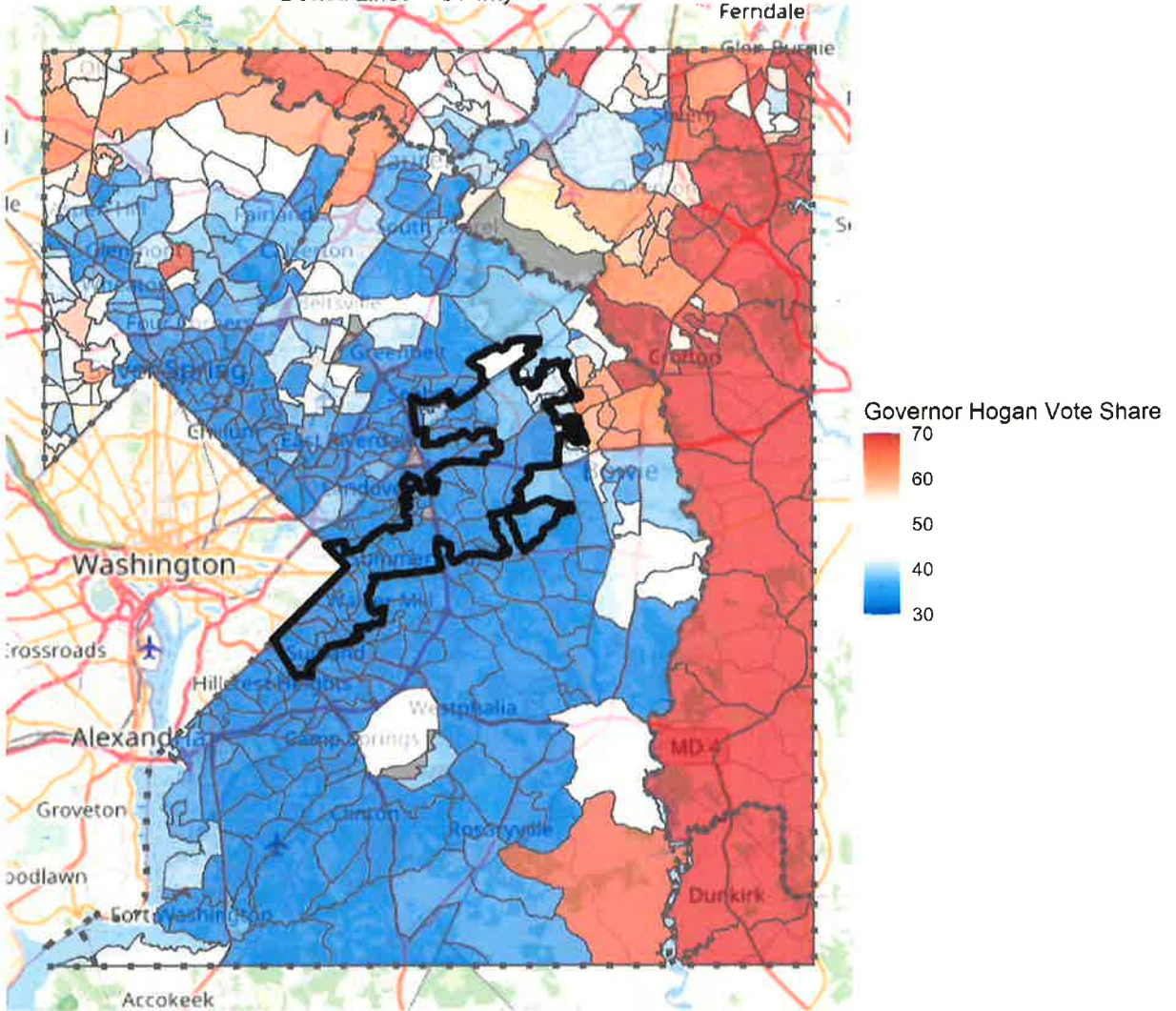
24th District, President Trump Share, 2020

Dotted Lines = County Lines



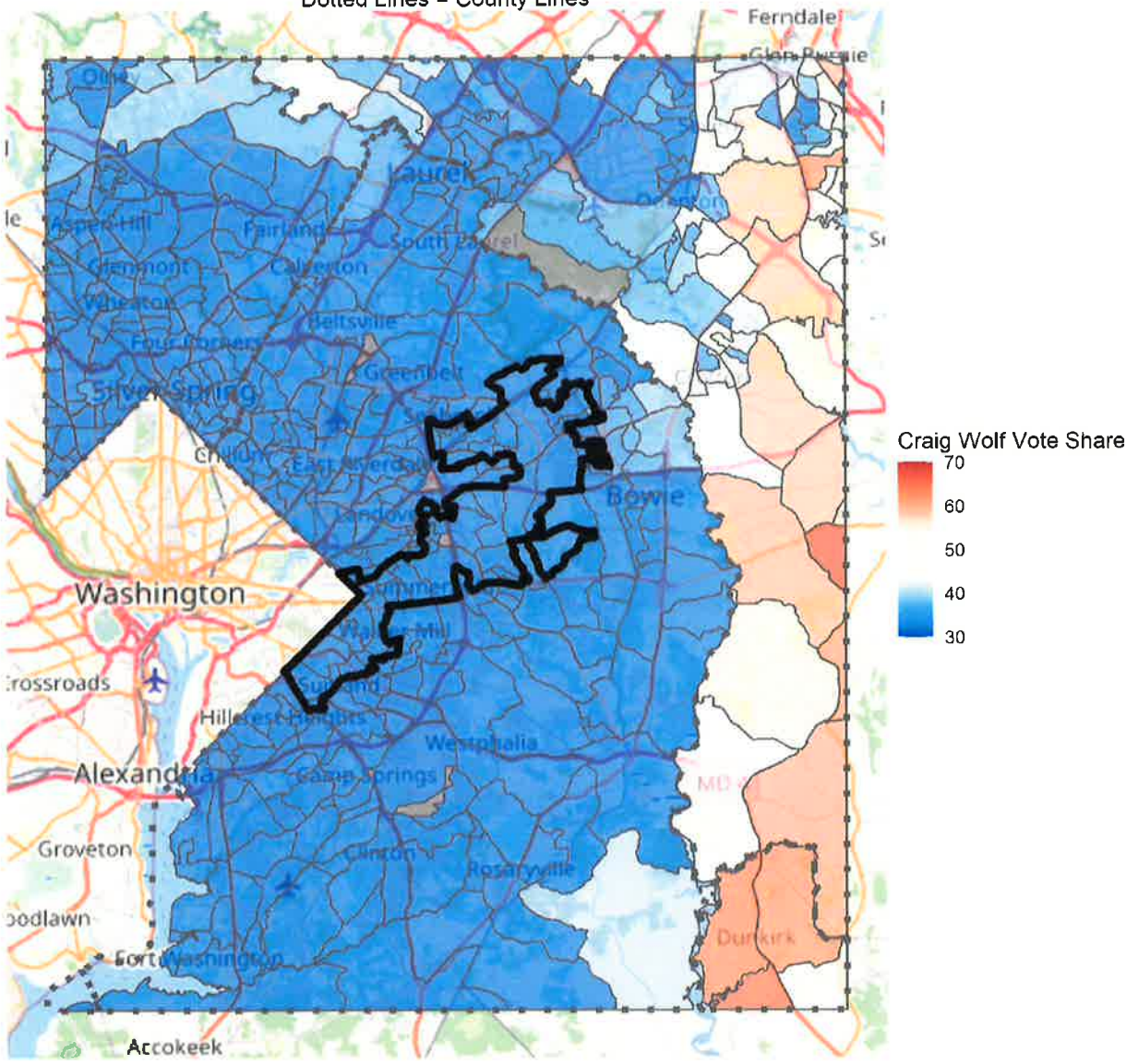
24th District, Governor Hogan Share, 2018

Dotted Lines = County Lines



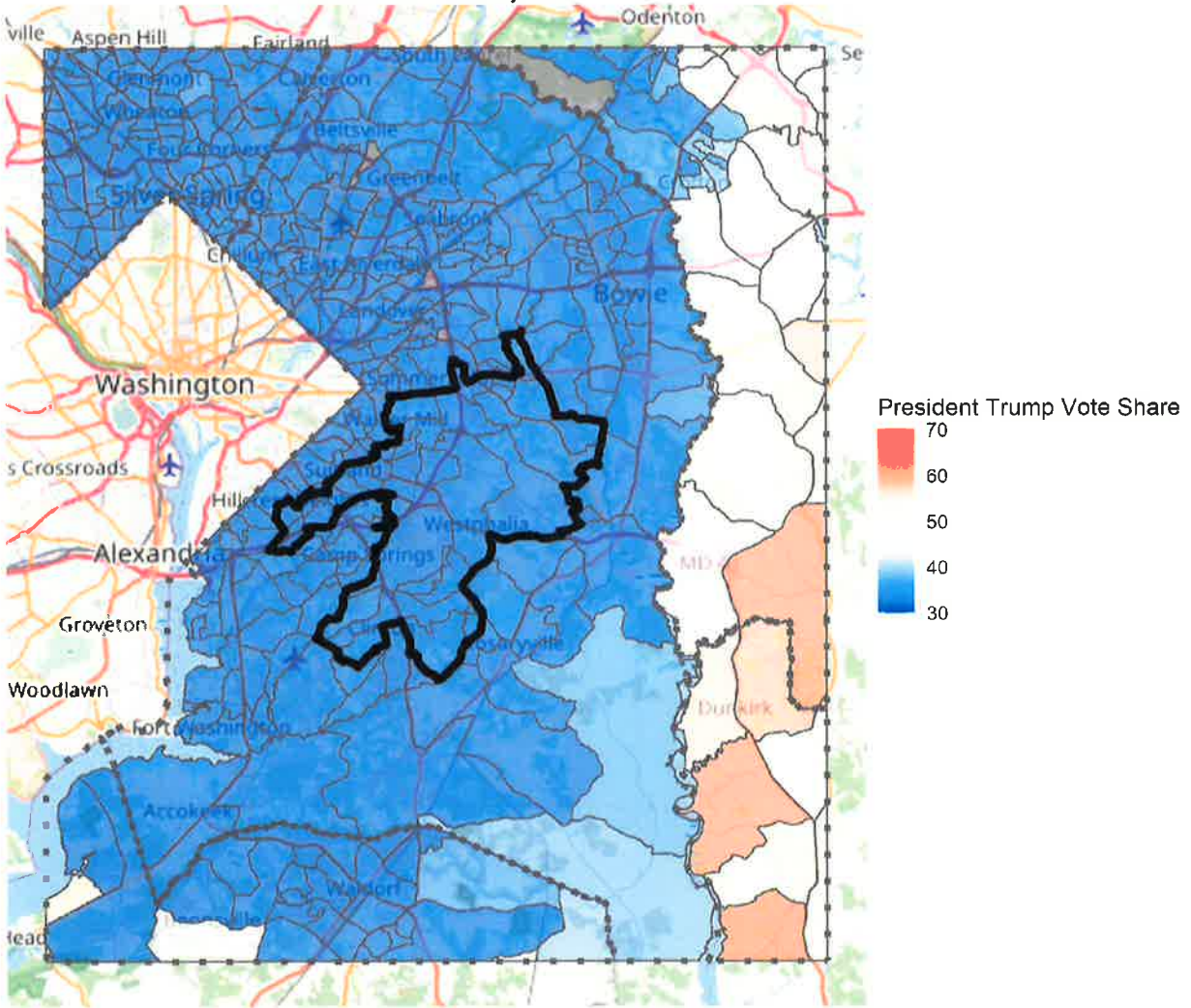
24th District, Craig Wolf Share, 2018

Dotted Lines = County Lines



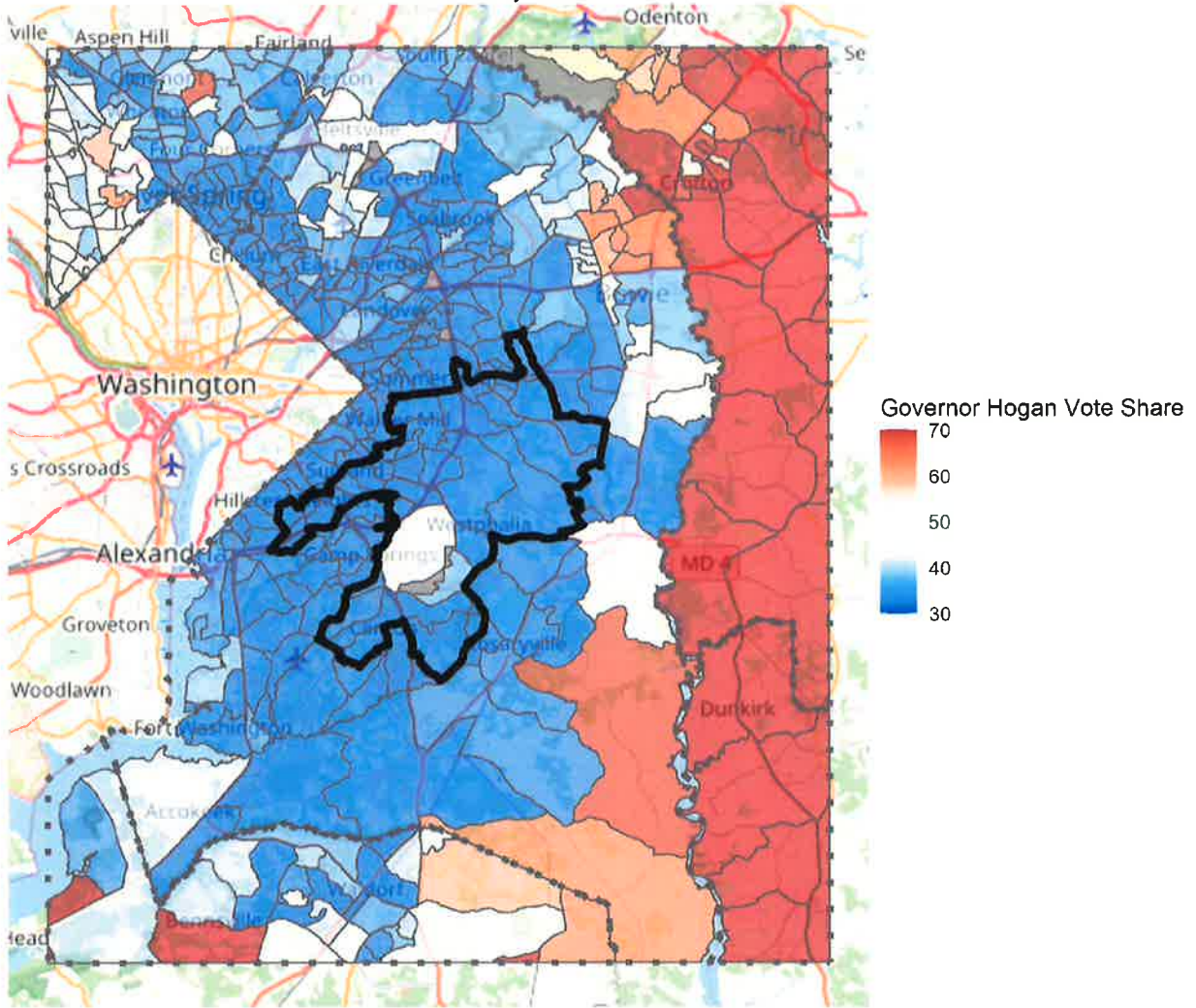
25th District, President Trump Share, 2020

Dotted Lines = County Lines



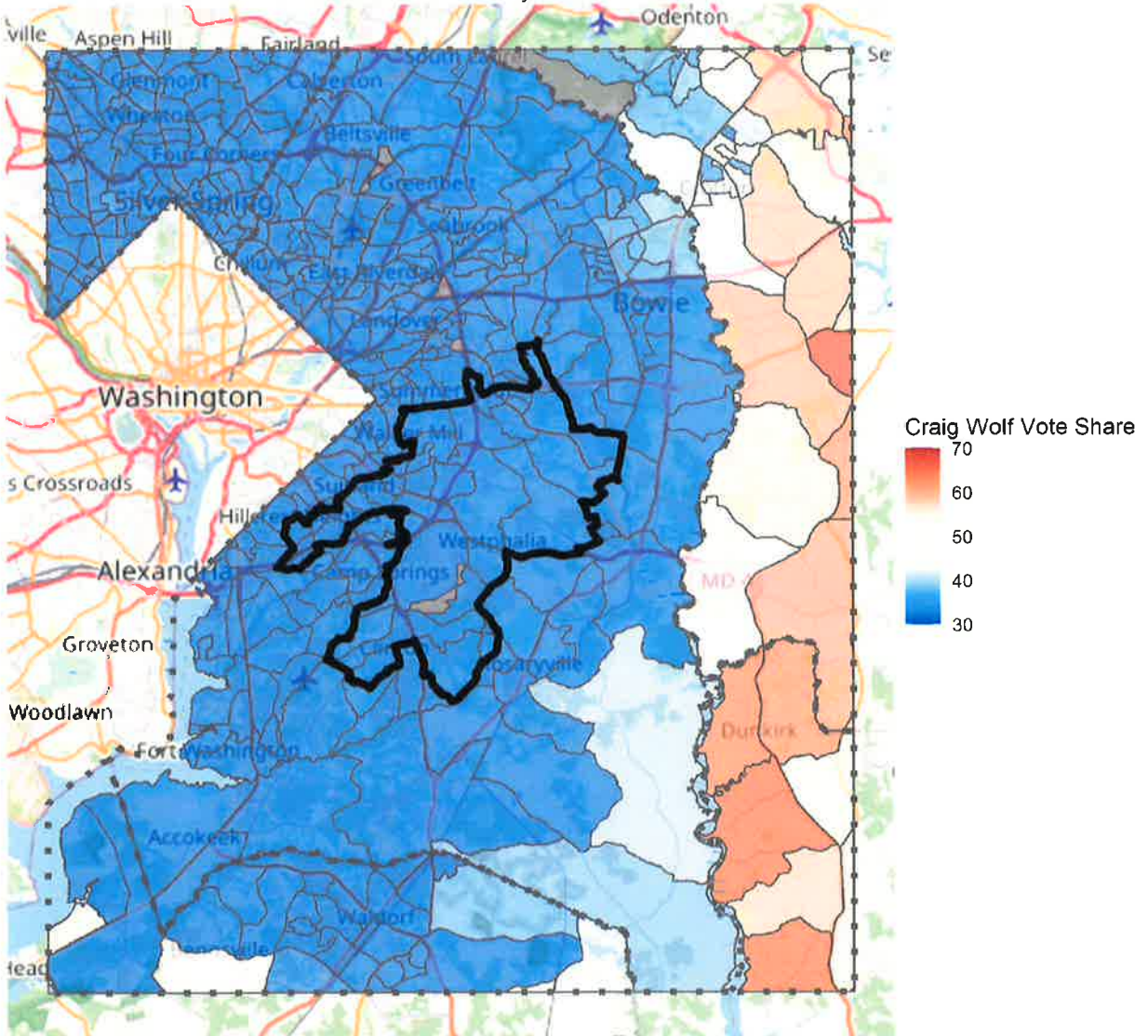
25th District, Governor Hogan Share, 2018

Dotted Lines = County Lines



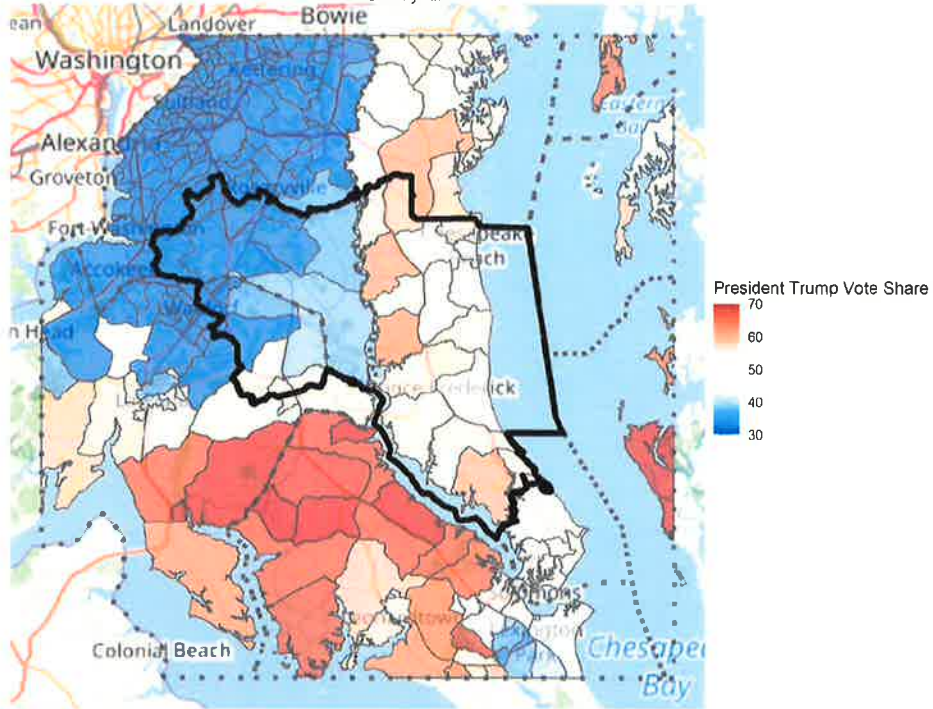
25th District, Craig Wolf Share, 2018

Dotted Lines = County Lines



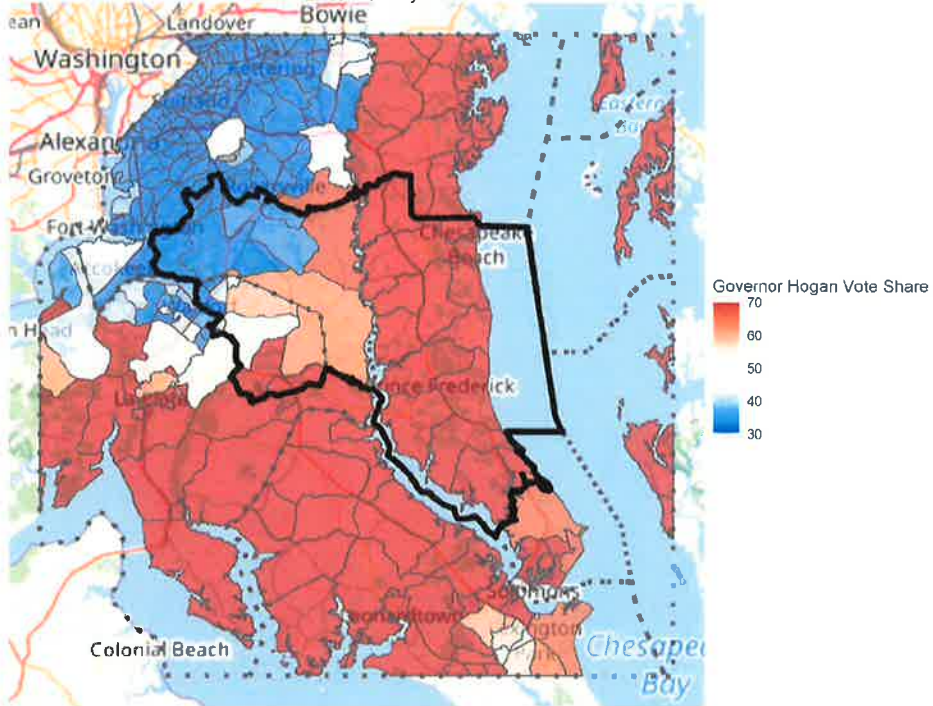
27th District, President Trump Share, 2020

Dotted Lines = County Lines



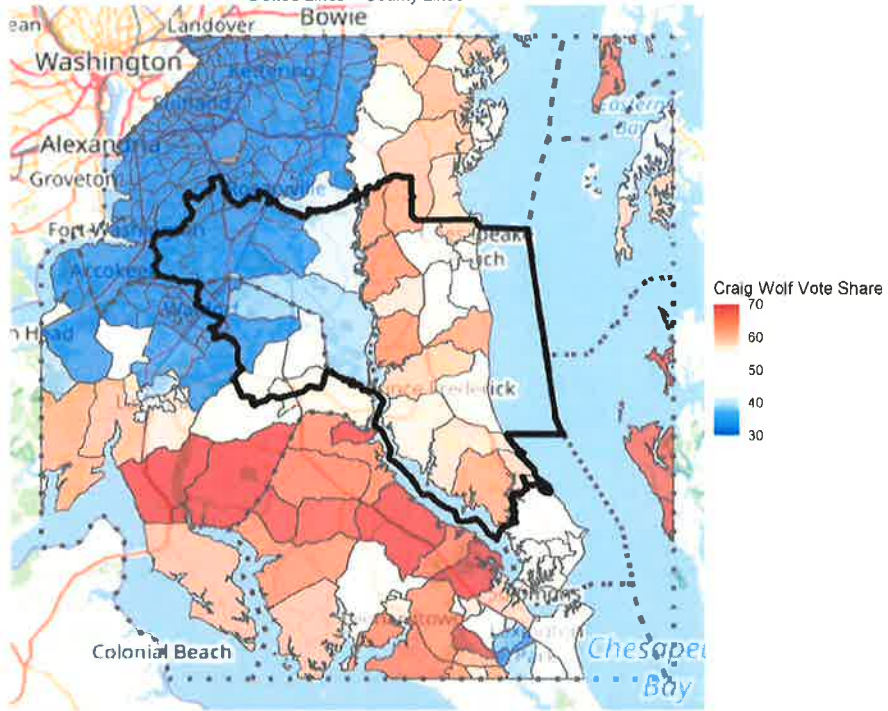
27th District, Governor Hogan Share, 2018

Dotted Lines = County Lines



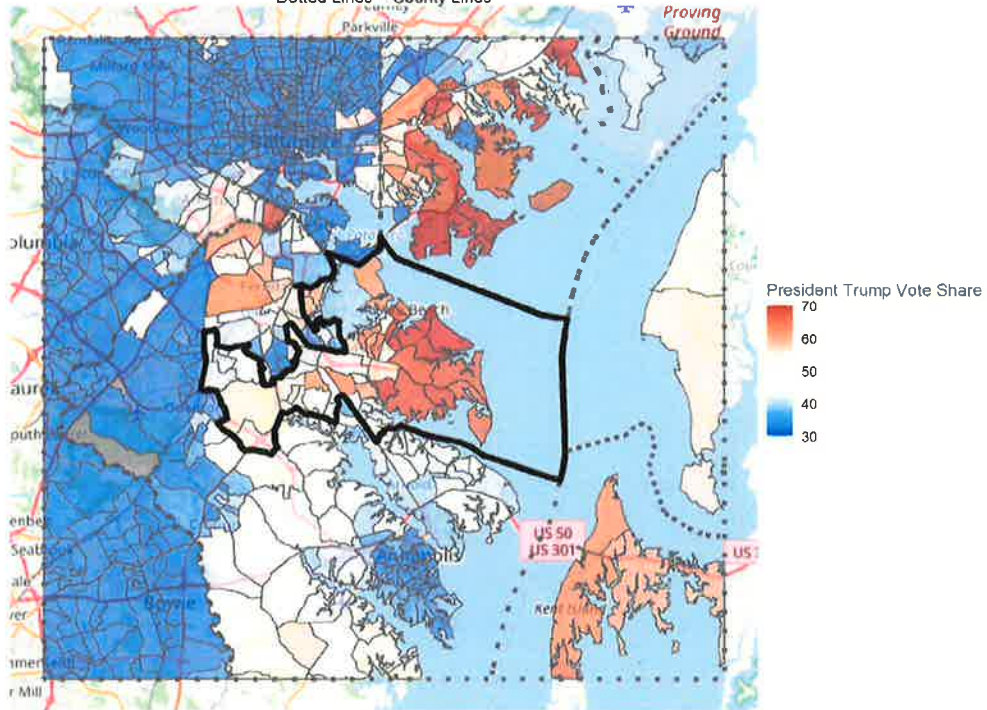
27th District, Craig Wolf Share, 2018

Dotted Lines = County Lines



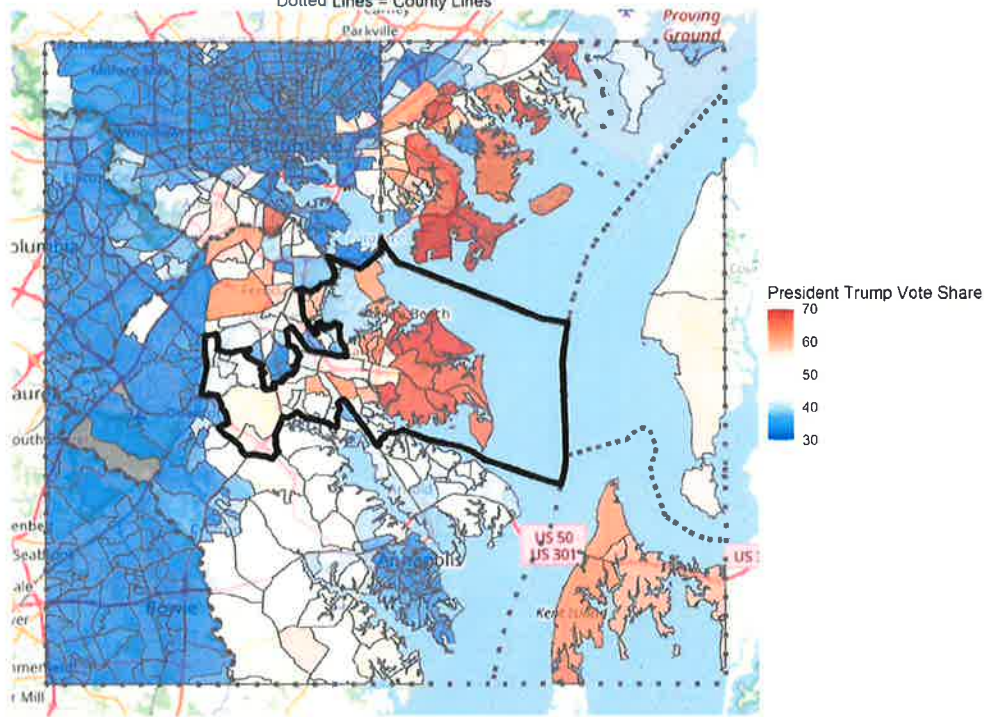
31st District, President Trump Share, 2020

Dotted Lines = County Lines



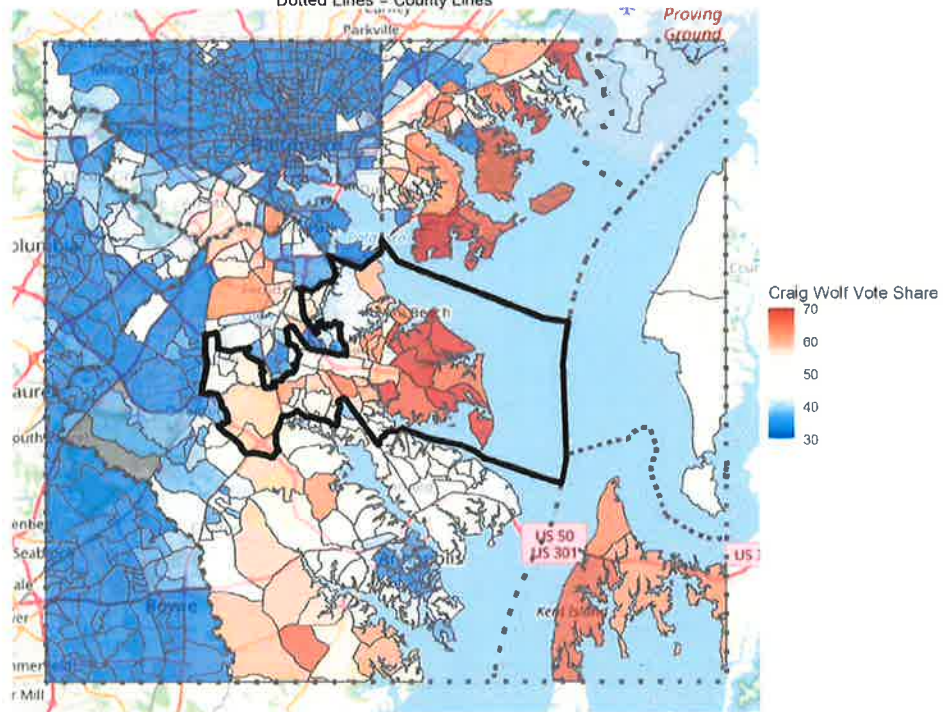
31st District, President Trump Share, 2020

Dotted Lines = County Lines

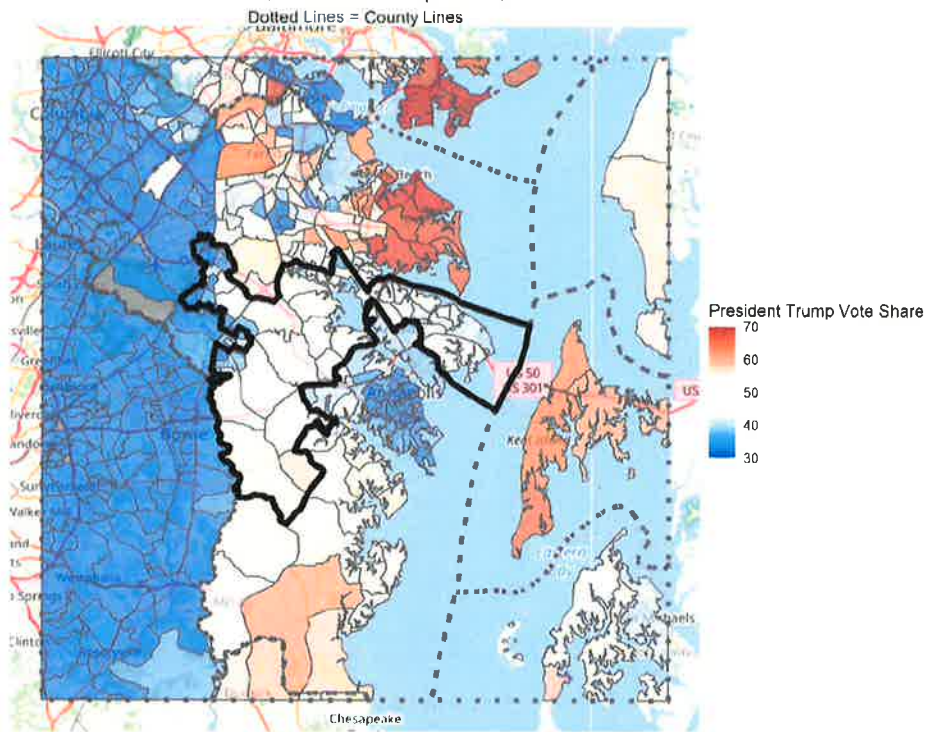


31st District, Craig Wolf Share, 2018

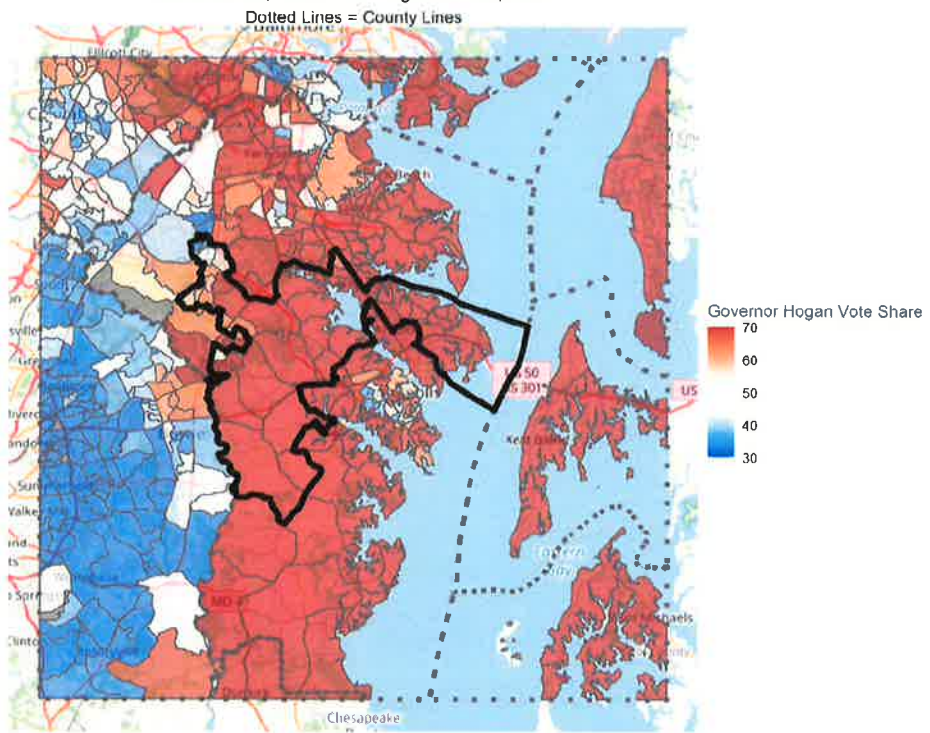
Dotted Lines = County Lines



33rd District, President Trump Share, 2020

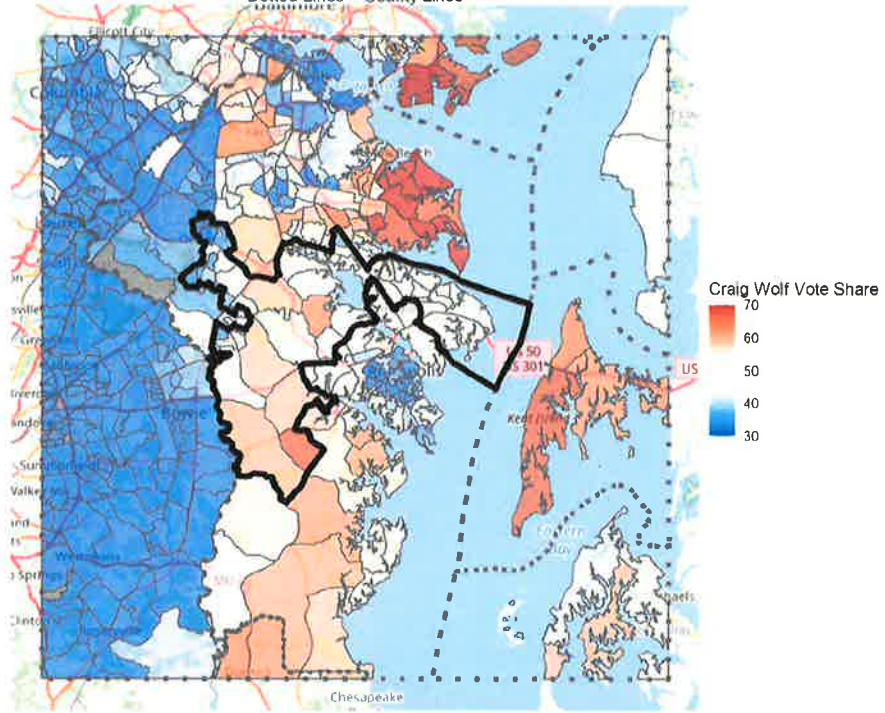


33rd District, Governor Hogan Share, 2018



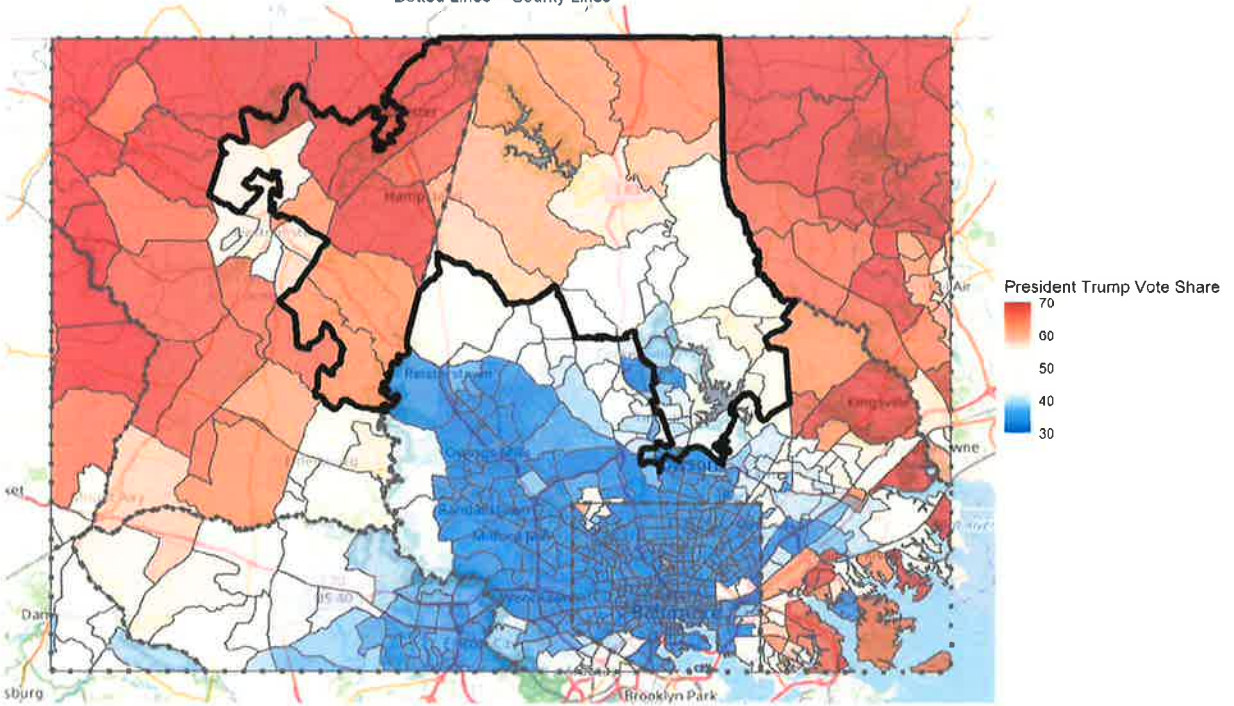
33rd District, Craig Wolf Share, 2018

Dotted Lines = County Lines

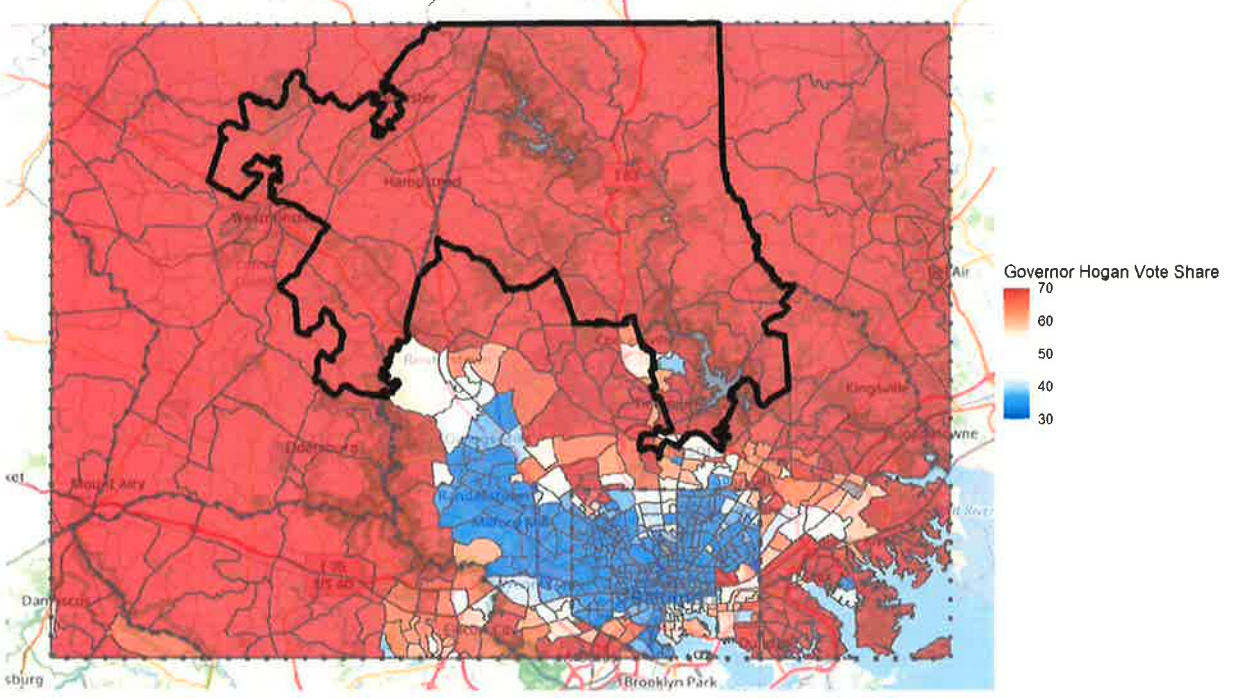


42nd District, President Trump Share, 2020

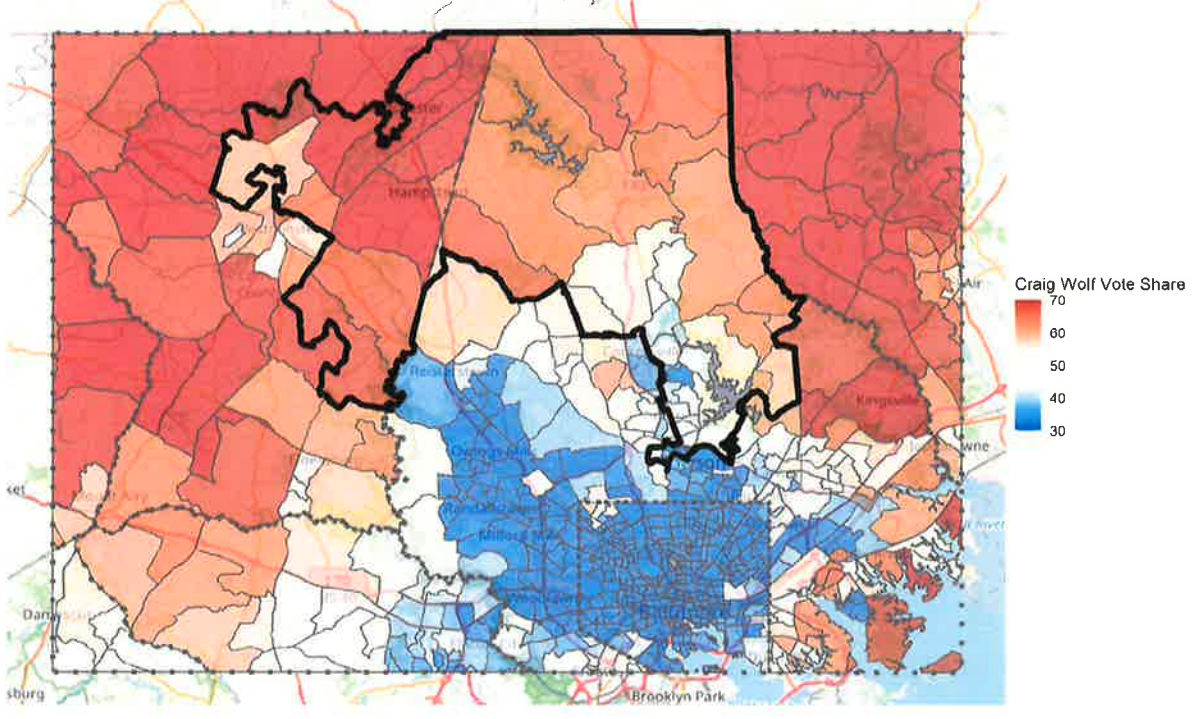
Dotted Lines = County Lines



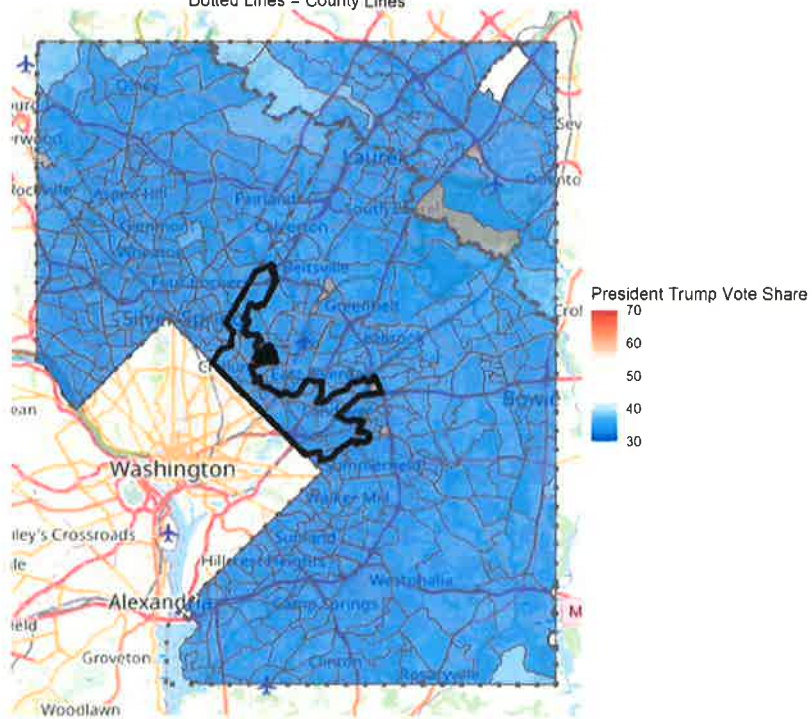
42nd District, Governor Hogan Share, 2018
Dotted Lines = County Lines



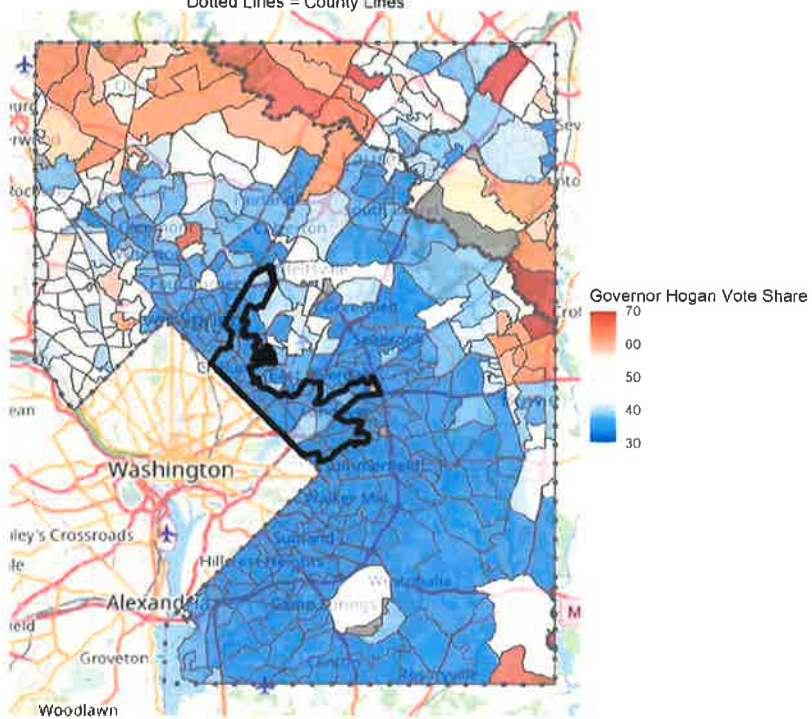
42nd District, Craig Wolf Share, 2018
Dotted Lines = County Lines



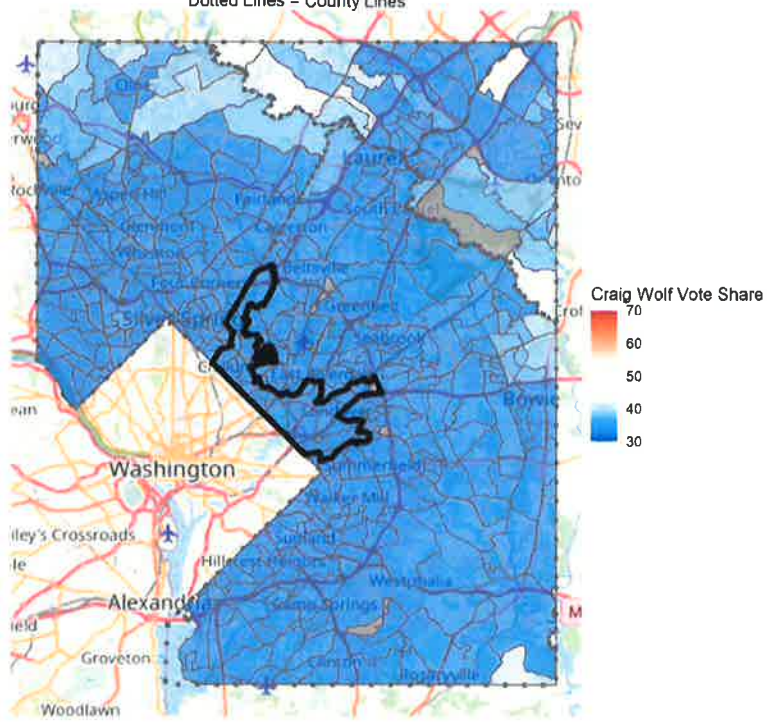
47th District, President Trump Share, 2020
Dotted Lines = County Lines



47th District, Governor Hogan Share, 2018
Dotted Lines = County Lines



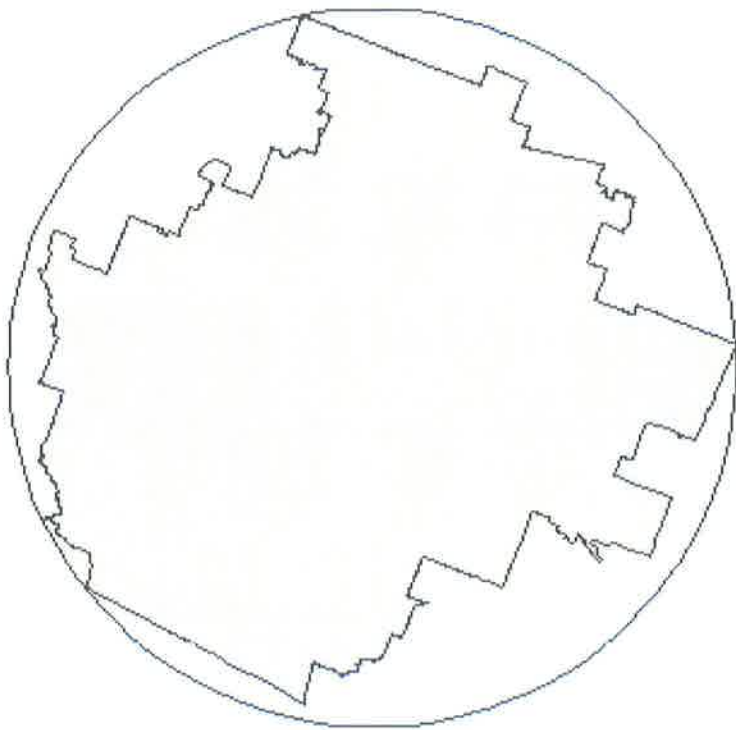
47th District, Craig Wolf Share, 2018
Dotted Lines = County Lines



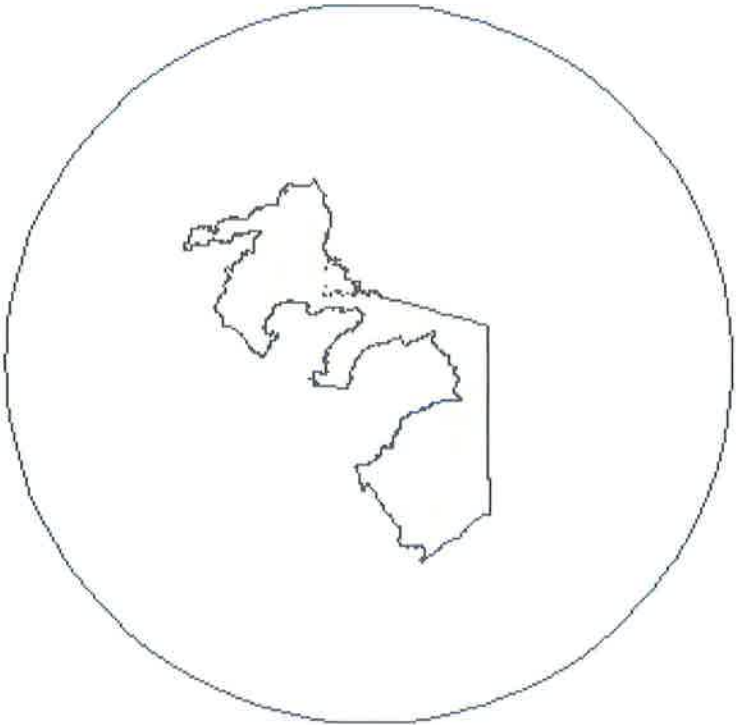
Enacted Plan District 3, Reock = 0.27



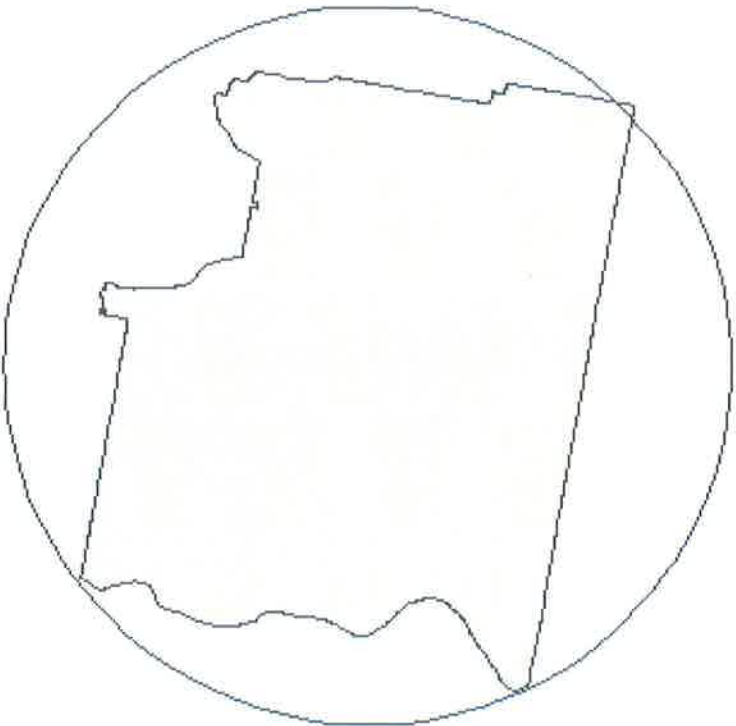
Arizona 7th CD (2012-2020), Reock = 0.67



Enacted Plan District 3, PP of .09



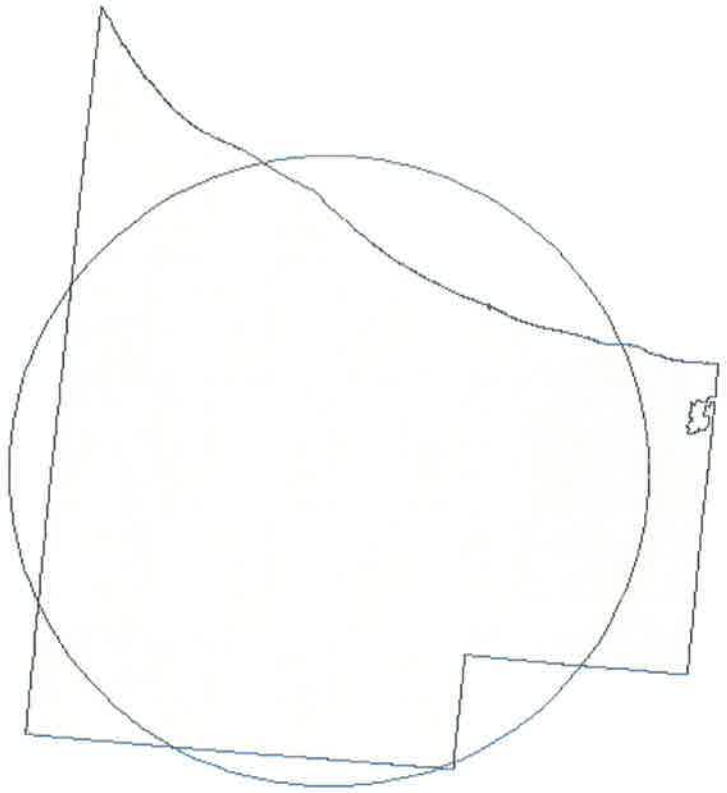
Minnesota 4th CD, PP of .56



Enacted Plan District 3, Inv. Schwartzberg of 29



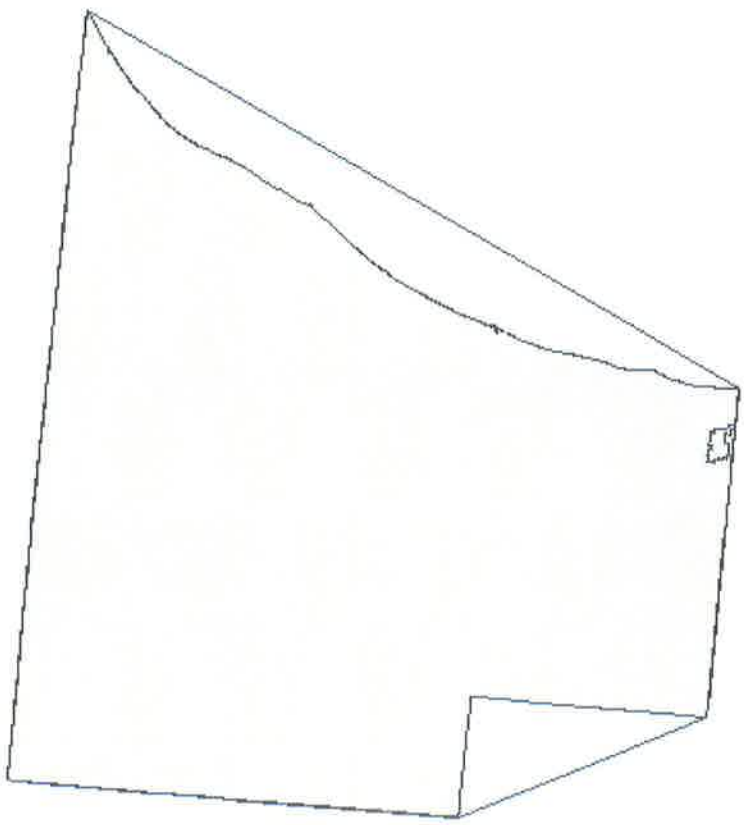
Michigan 6th CD (2012-2020), Inv. Schwartzberg of 0.7328347



Enacted Plan District 3, Convex Hull of 0.54



MI 6th CD (2012-2020), Convex Hull of 0.86

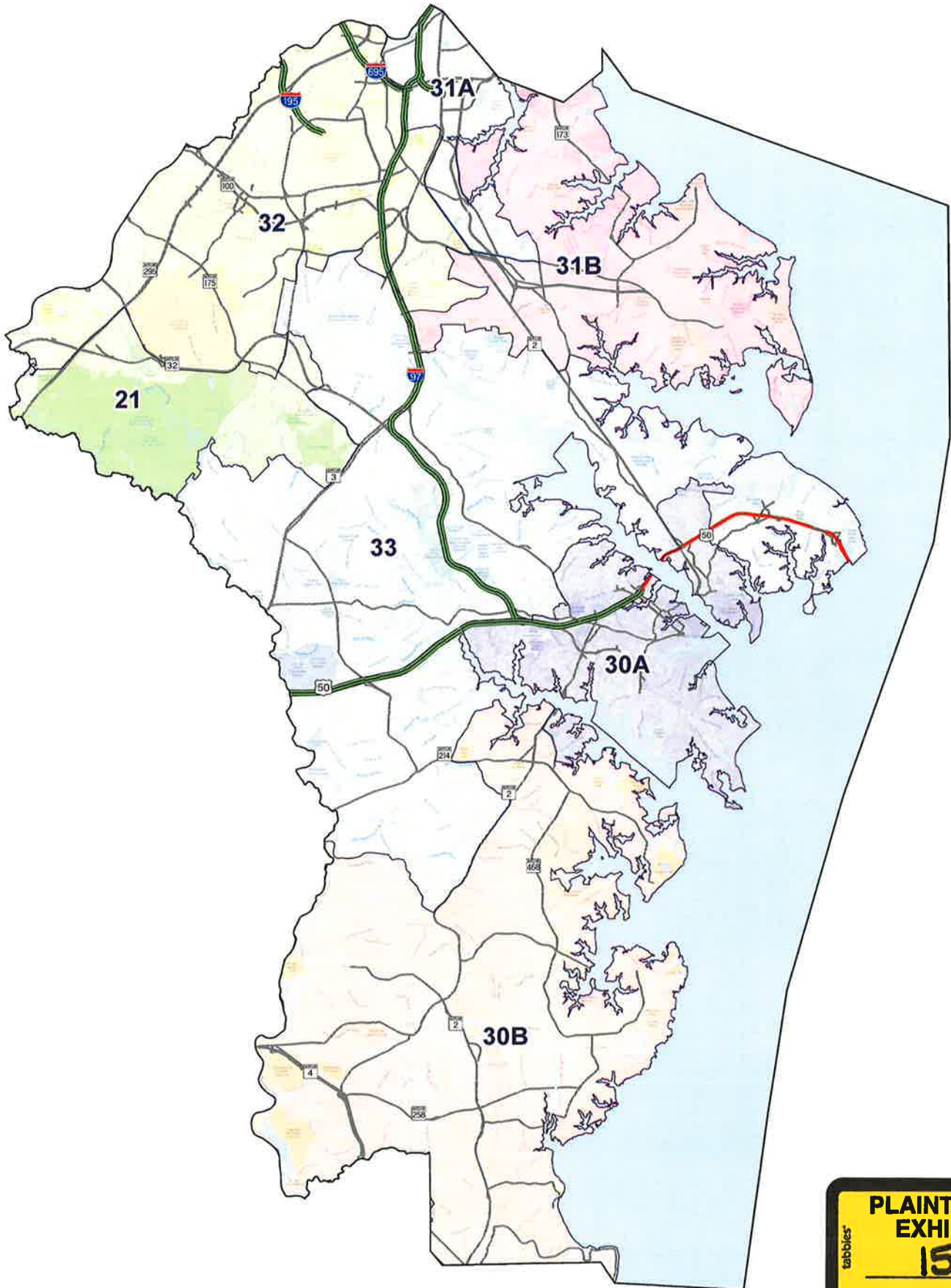


Anne Arundel Legislative Districts

SJR1/HJR1, February 24, 2012



Prepared by Maryland Department of Planning
State Data Center, Redistricting, Sept 2018



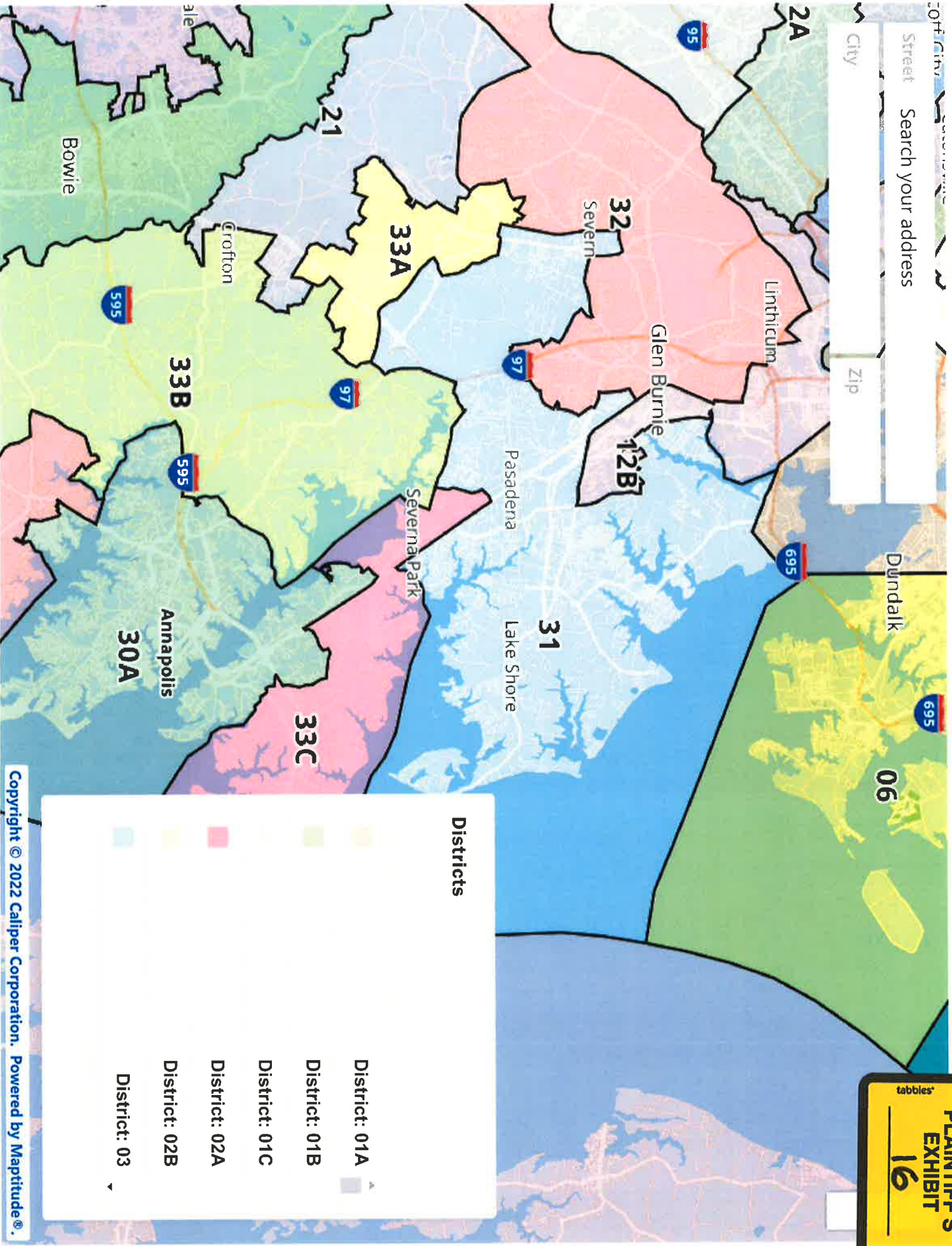
**PLAINTIFF'S
EXHIBIT**
15

City

Street

Search your address

Zip



Districts

- District: 01A
- District: 01B
- District: 01C
- District: 02A
- District: 02B
- District: 03

tabbles®

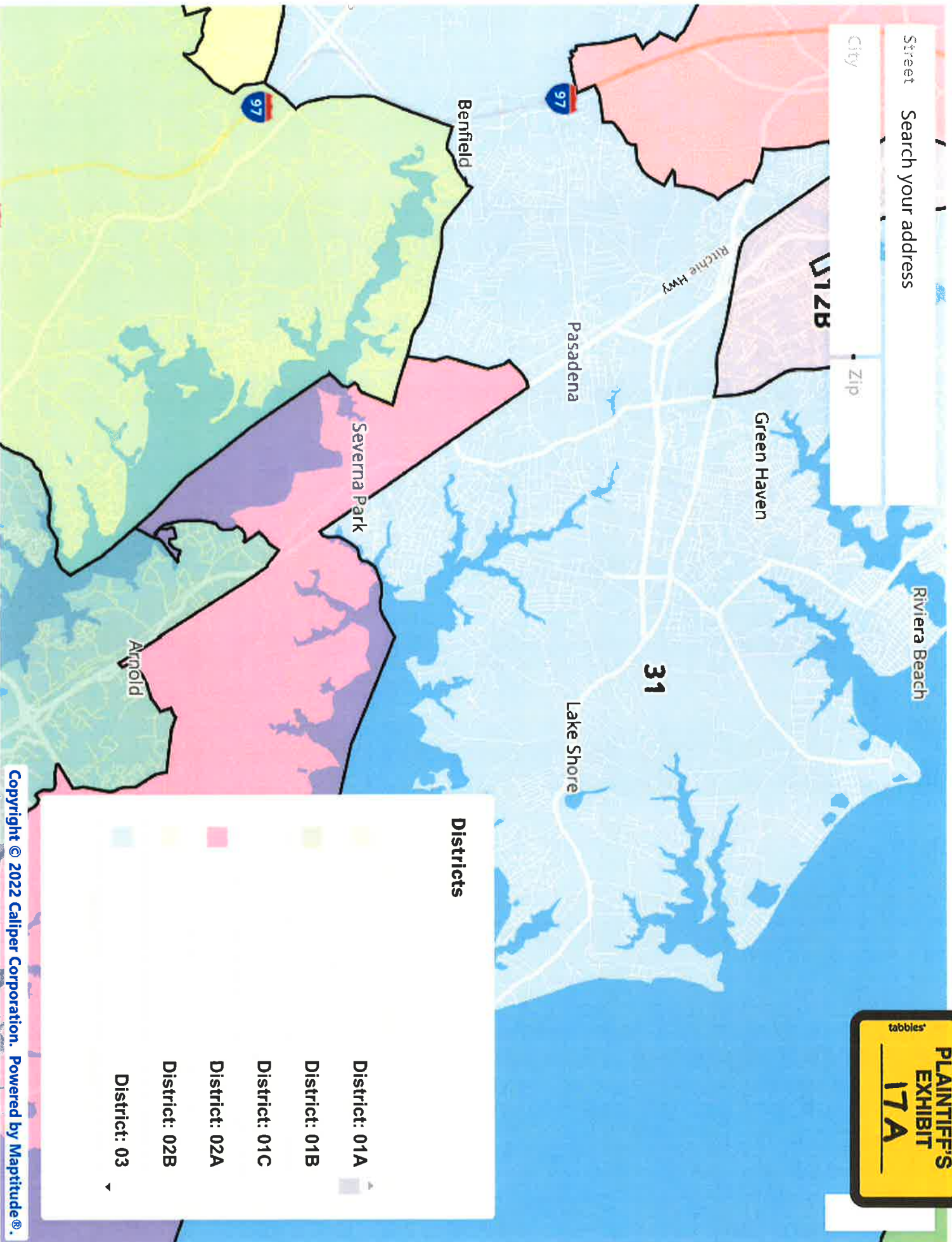
PLAINTIFF'S EXHIBIT

16

Street

City

Zip

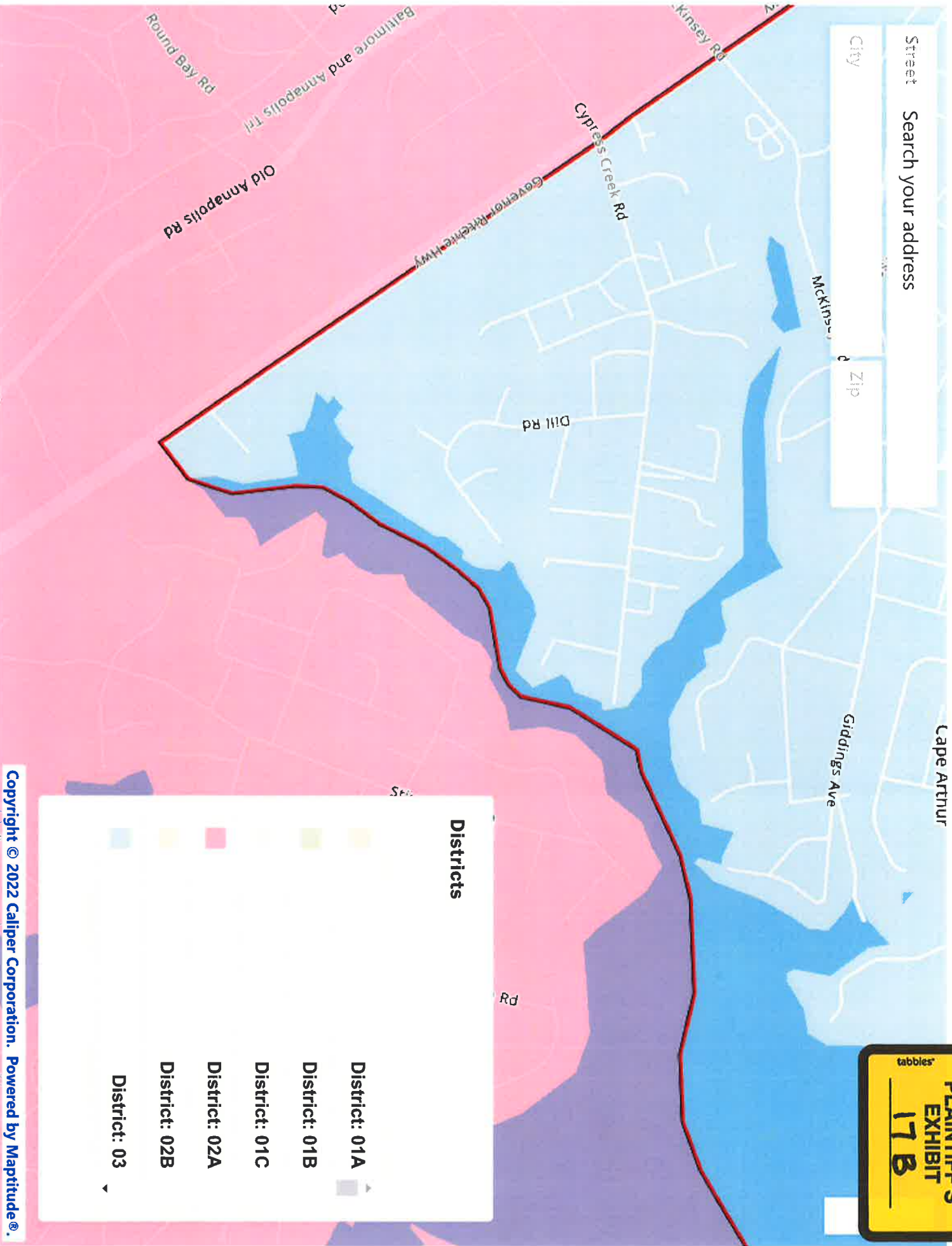


Cape Arthur

Street Search your address

City

Zip

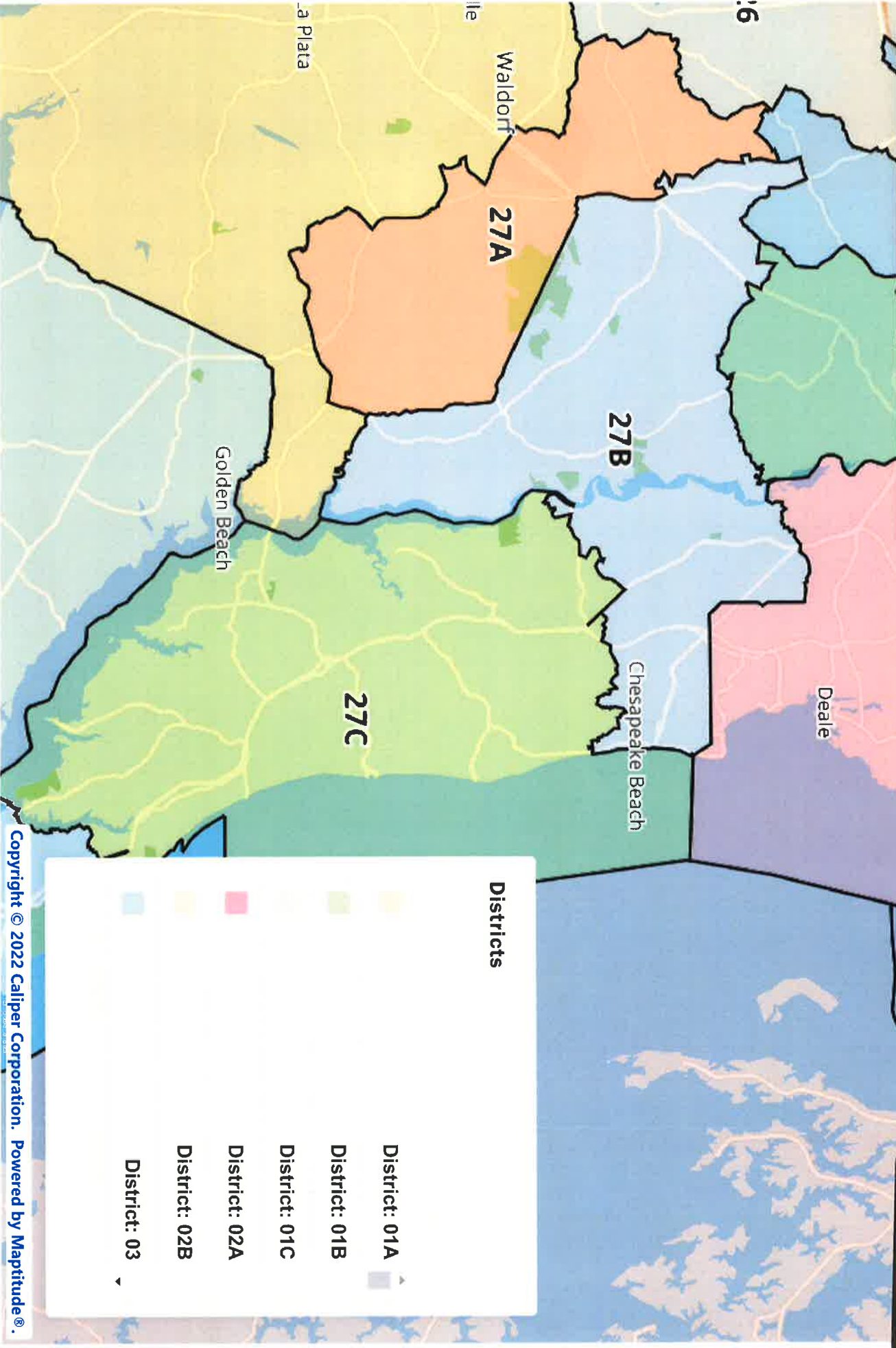


Street Search your address

City Zip

tabbles[®]

PLAINTIFF'S EXHIBIT 18A

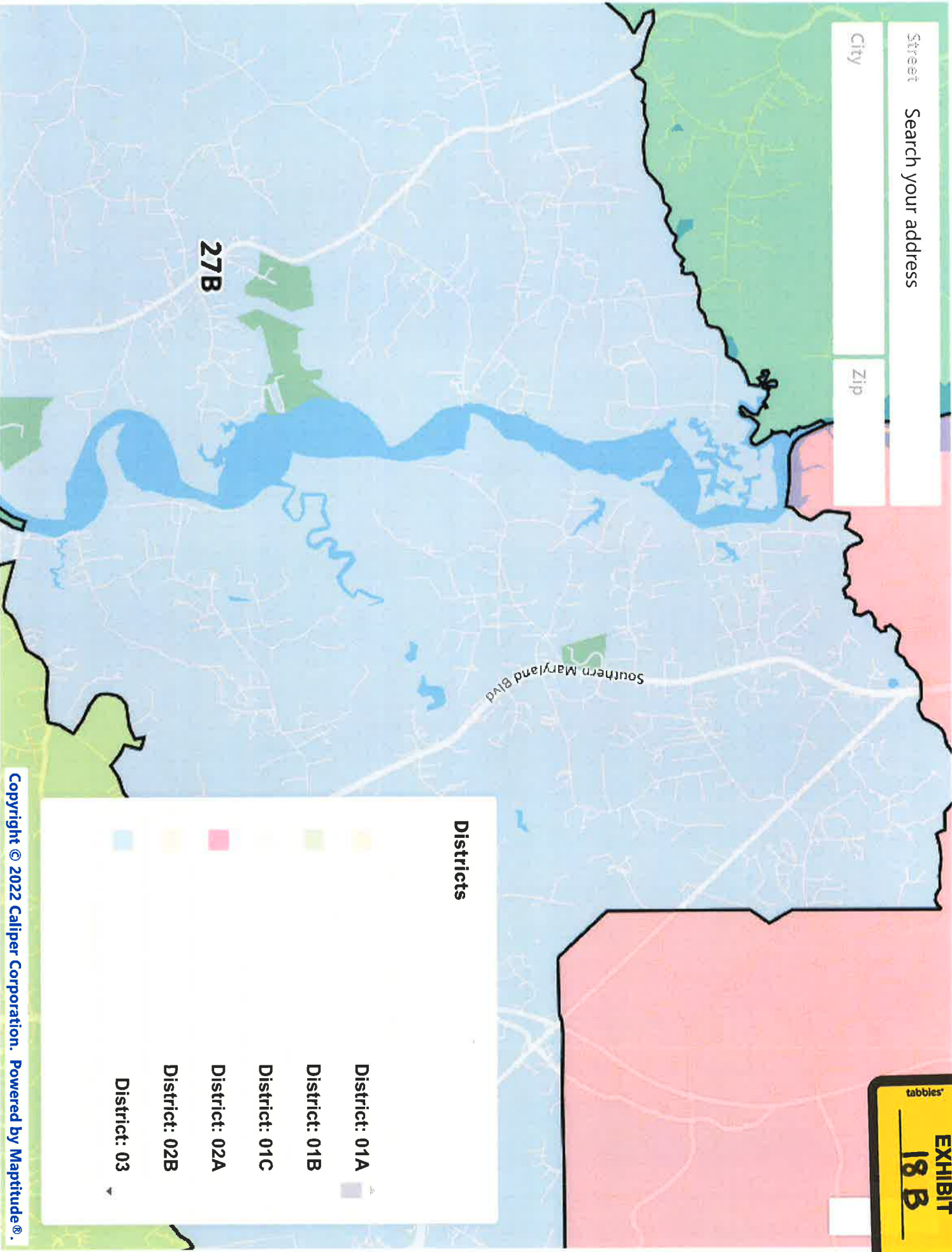


Districts

- District: 01A
- District: 01B
- District: 01C
- District: 02A
- District: 02B
- District: 03

Street Search your address

City Zip



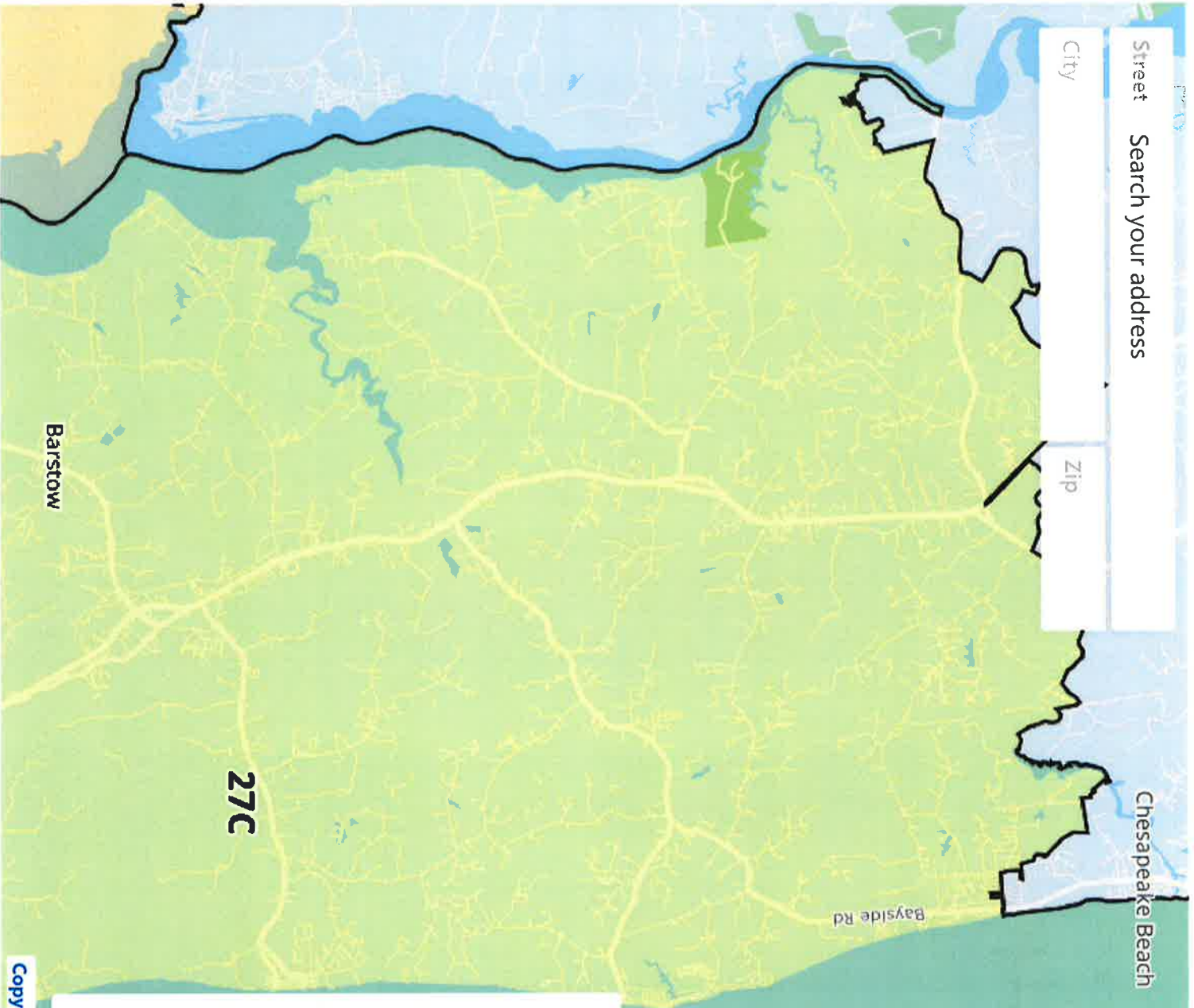
Districts

- District: 01A
- District: 01B
- District: 01C
- District: 02A
- District: 02B
- District: 03

Street Search your address

City

Zip



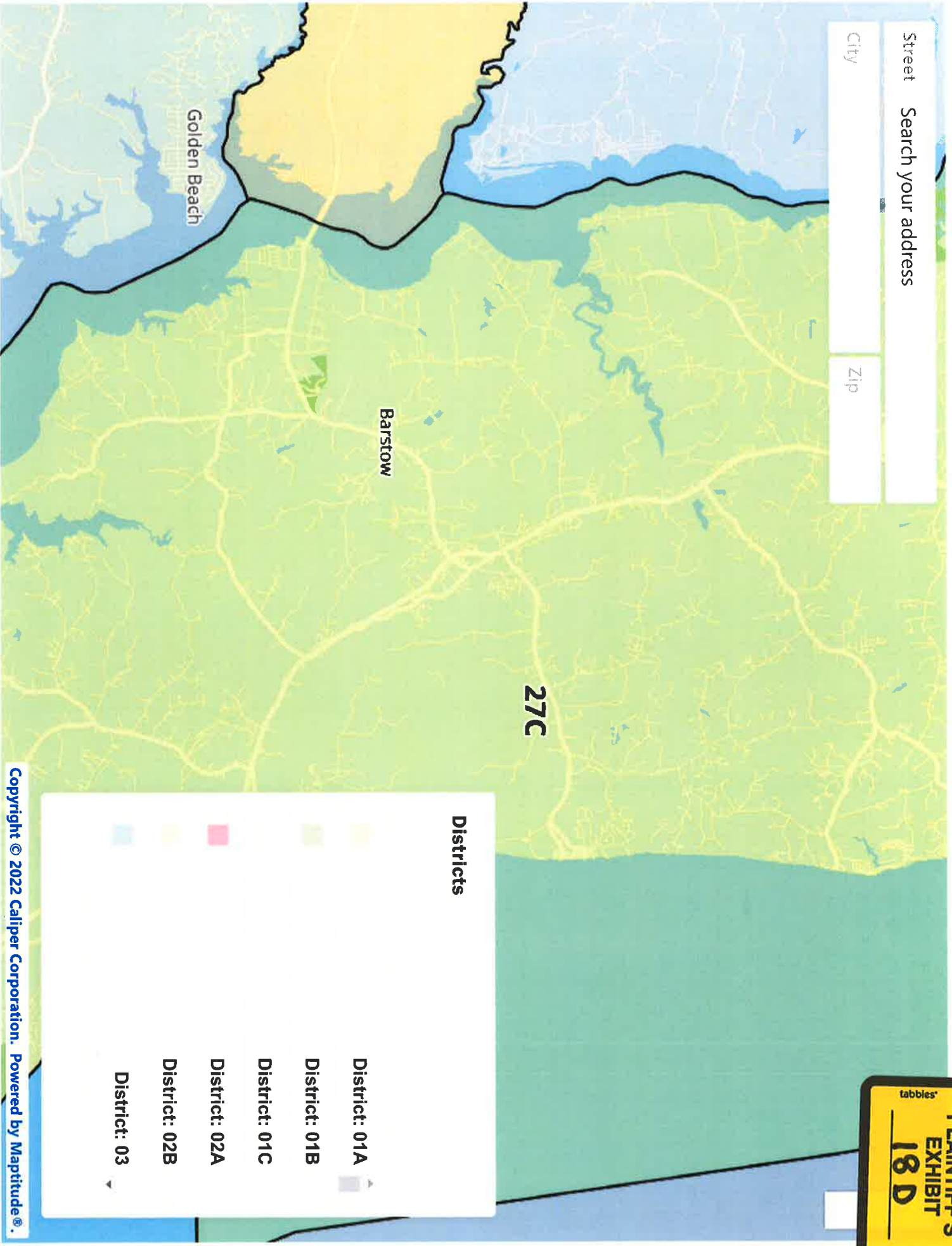
Districts

- District: 01A
- District: 01B
- District: 01C
- District: 02A
- District: 02B
- District: 03

Street

City

Zip



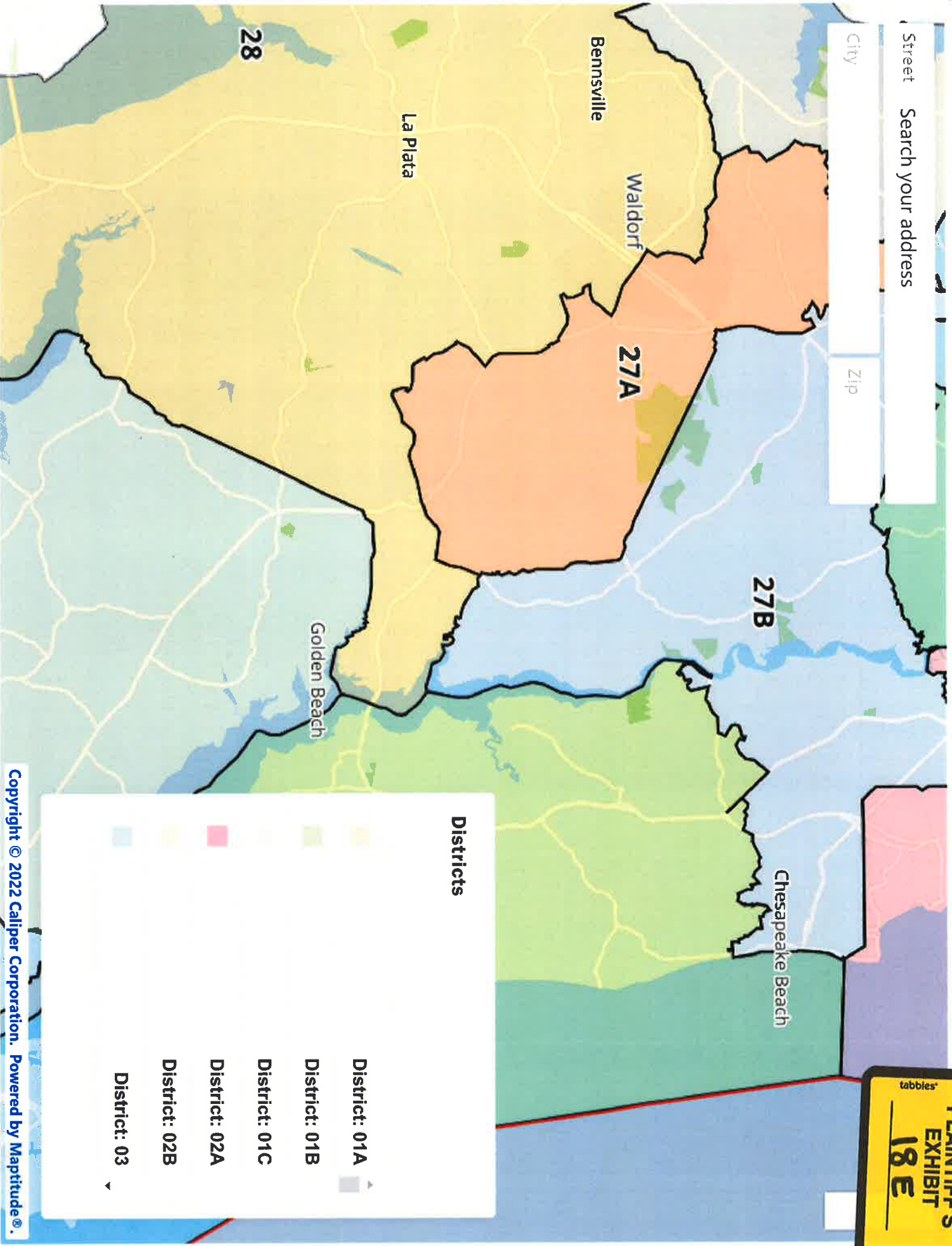
Districts

- District: 01A
- District: 01B
- District: 01C
- District: 02A
- District: 02B
- District: 03

Street Search your address

City

Zip



Districts

- District: 01A
- District: 01B
- District: 01C
- District: 02A
- District: 02B
- District: 03

Precincts Moved out of D33

Precinct	Registered Dem	Registered Reps	Move to
5-05 (Partial)	861	744	D30A
5-23 (Partial)	597	560	D30A
05-007	561	704	D31
05-008	844	801	D31
05-009	461	500	D31
05-014	741	778	D31
05-015	371	443	D31
05-019 (Partial)	641	687	D31
05-024	539	739	D31
05-034	449	463	D31
04-004 (Partial)	745	999	D31
04-013	552	814	D31
02-021 (Partial)	1204	1244	D31 and D32
02-023	918	1031	D31
02-024	1141	803	D31
04-021 (Partial)	1398	1018	D21
07-024	932	872	D21
07-018	913	655	D21
07-026 (Partial)	792	805	D21
07-014	599	492	D21
04-010	1325	592	D21
04-018	1678	760	D21
06-018 (Partial)	363	383	D30A

Moved Into D33

Move From

04-008	773	724	D21
04-003	723	657	D21
04-023 (Partial)	1474	987	D21
04-005	706	333	D21
04-016	1087	482	D21
04-011	969	423	D21
04-012	902	588	D21
04-002	1248	672	D21
04-019	1398	188	D32
04-024	1543	279	D32
04-026	745	227	D32
05-029 (Partial)	315	353	D30

