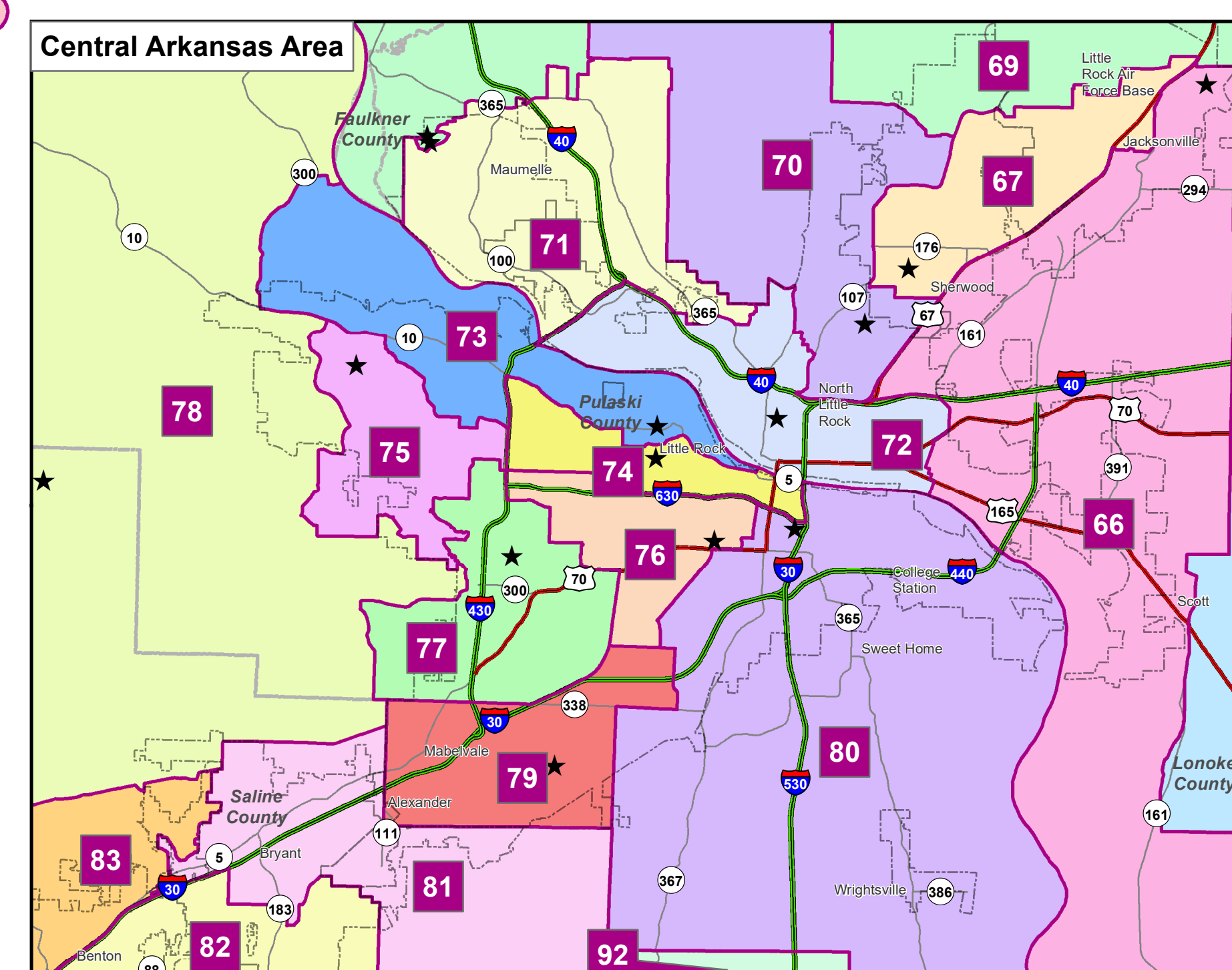
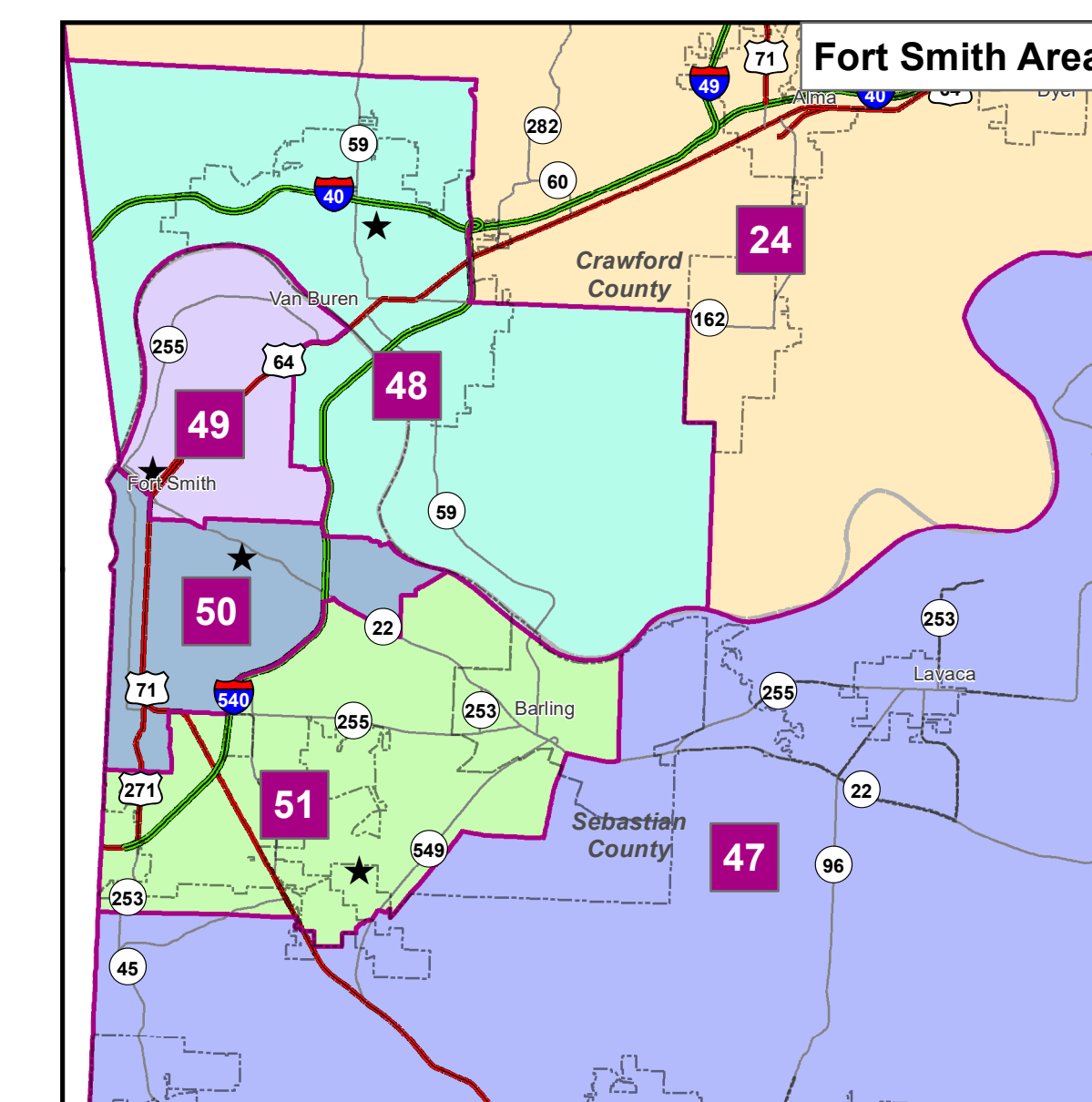
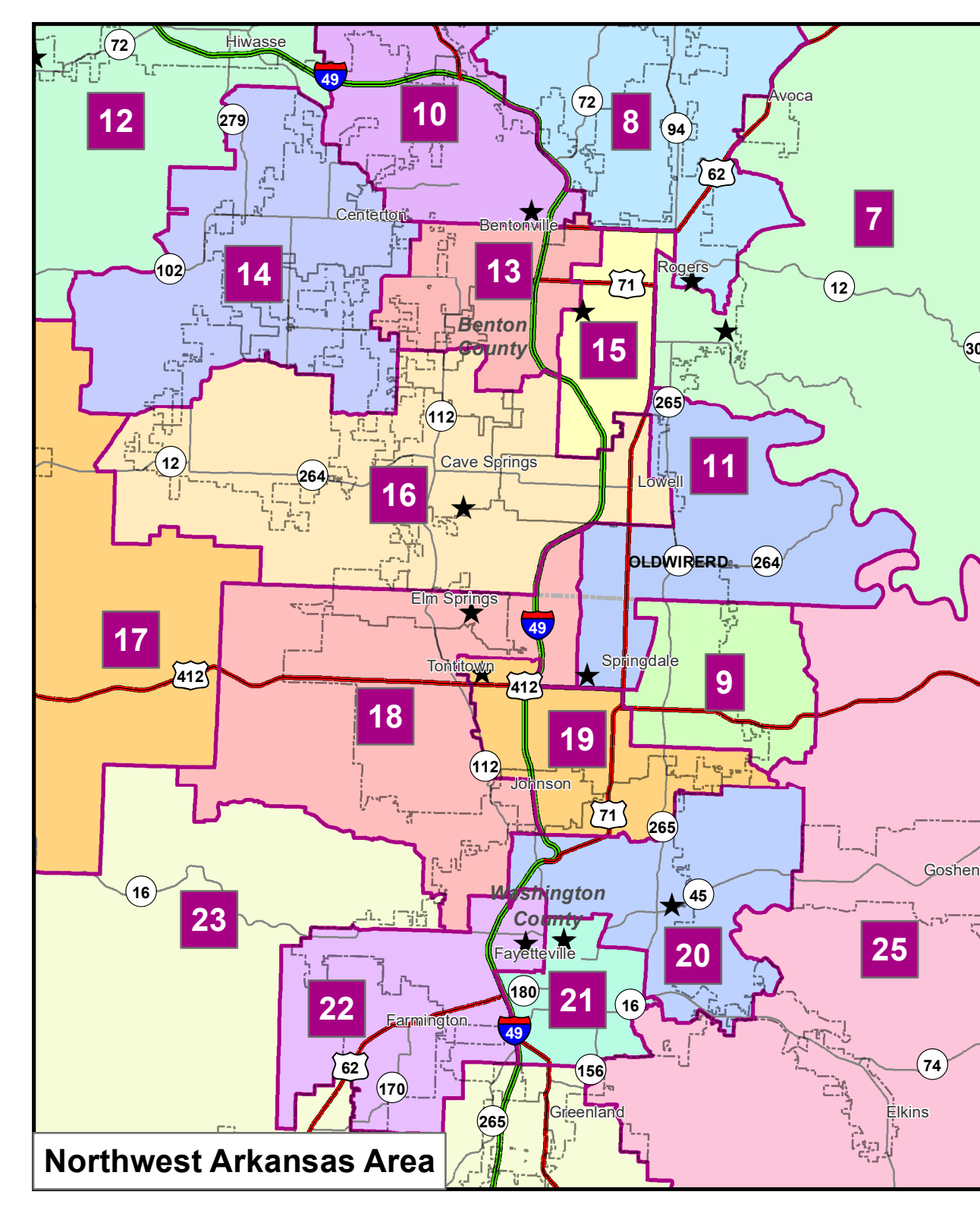
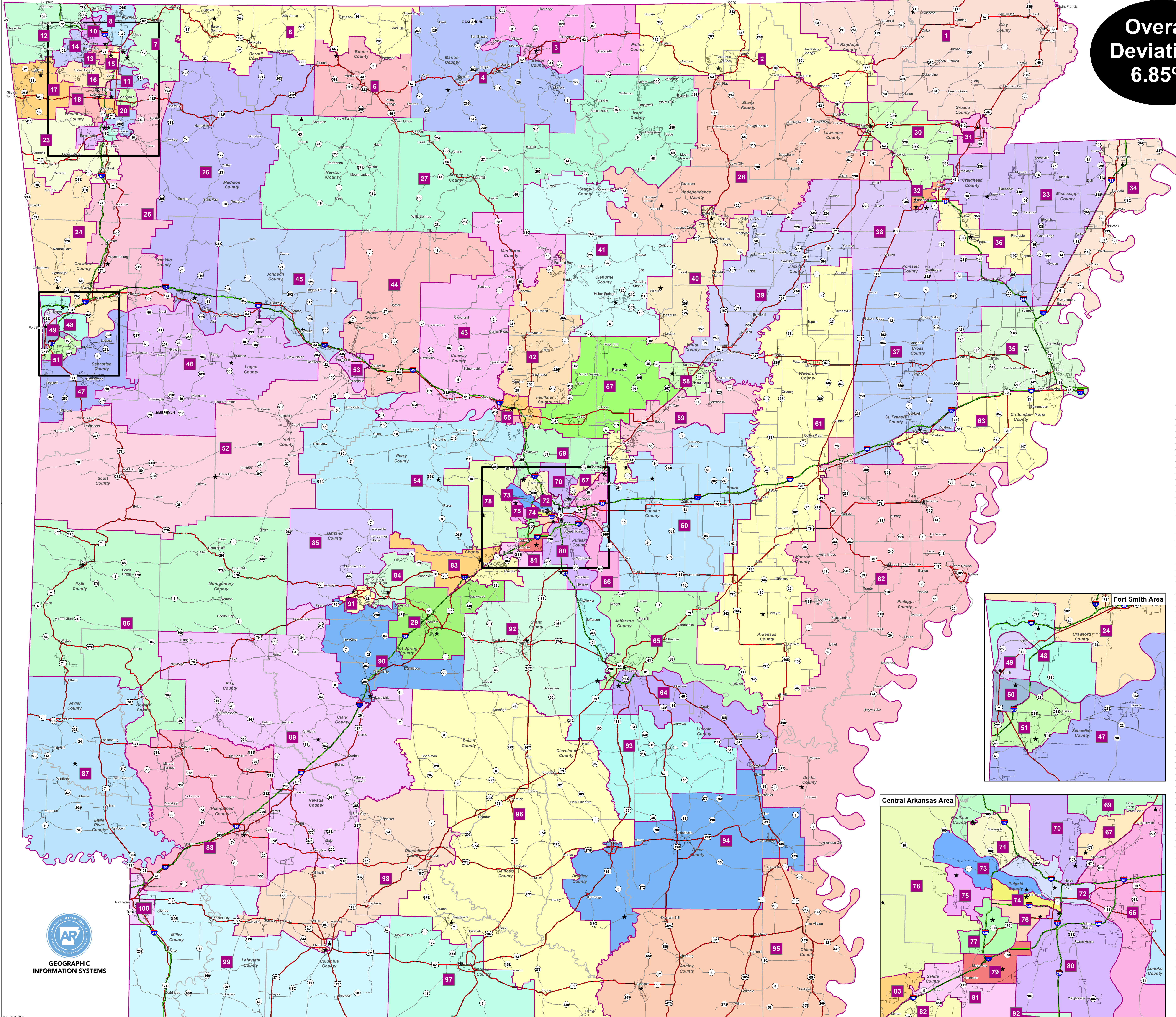


2021 House Boundaries

**Overall Deviation:
6.85%**



DISTRICT	Total Population Tabulation		Racial Demographics as a Percent of Total Population				
	2010	2015	White	Black	Hispanic	Minority	
1	30,815	30,115	2.22%	700	94.12%	1.84%	5.87%
2	30,882	30,115	2.58%	777	90.73%	0.57%	9.27%
3	31,181	30,115	3.54%	1,066	92.71%	0.24%	2.53%
4	29,687	30,115	-1.42%	-428	92.30%	0.13%	2.24%
5	30,881	30,115	-2.54%	-766	91.23%	0.31%	8.77%
6	29,541	30,115	-1.91%	-574	82.58%	0.31%	10.92%
7	29,885	30,115	-0.76%	-230	65.40%	0.67%	31.51%
8	30,027	30,115	-0.29%	-88	79.46%	0.96%	13.12%
9	30,626	30,115	-1.69%	-510	31.44%	2.06%	54.16%
10	31,066	30,115	3.16%	951	78.63%	1.87%	8.89%
11	29,776	30,115	-1.13%	-339	51.10%	2.23%	35.39%
12	30,767	30,115	2.16%	652	84.53%	0.59%	6.66%
13	29,678	30,115	-1.57%	-497	57.67%	2.83%	42.33%
14	29,752	30,115	-1.21%	-363	71.06%	3.94%	12.89%
15	29,405	30,115	-2.36%	-710	59.72%	1.67%	34.46%
16	29,446	30,115	-2.22%	-669	76.50%	1.66%	14.65%
17	29,726	30,115	-1.29%	-389	67.80%	0.84%	19.53%
18	29,291	30,115	-2.74%	-824	71.25%	3.22%	15.89%
19	29,276	30,115	-2.79%	-839	65.42%	3.56%	22.47%
20	29,707	30,115	-1.36%	-408	79.46%	4.18%	6.97%
21	29,707	30,115	-1.36%	-408	79.46%	4.18%	6.97%
22	29,260	30,115	-2.84%	-855	77.01%	5.90%	8.57%
23	29,561	30,115	-1.84%	-554	81.42%	1.38%	6.64%
24	29,388	30,115	-2.41%	-727	84.18%	0.99%	4.86%
25	29,668	30,115	-1.49%	-447	86.36%	0.65%	4.87%
26	30,181	30,115	0.88%	266	84.05%	0.32%	7.88%
27	31,177	30,115	3.53%	1,062	91.41%	0.87%	1.94%
28	31,081	30,115	3.21%	966	91.76%	1.06%	2.88%
29	30,921	30,115	2.65%	777	78.20%	2.18%	4.86%
30	30,778	30,115	0.54%	163	83.81%	1.78%	4.12%
31	31,014	30,115	2.98%	899	87.78%	2.86%	4.29%
32	31,106	30,115	3.29%	991	64.01%	22.75%	7.65%
33	31,192	30,115	3.98%	1,077	67.60%	4.68%	6.47%
34	30,073	30,115	-1.44%	-42	45.58%	46.90%	3.86%
35	30,532	30,115	1.38%	417	38.06%	55.50%	3.05%
36	31,082	30,115	3.21%	967	68.62%	19.35%	7.17%
37	30,993	30,115	2.95%	878	68.23%	16.81%	31.77%
38	31,048	30,115	3.10%	933	79.61%	11.56%	3.63%
39	31,122	30,115	3.34%	1,007	82.88%	9.34%	3.88%
40	30,068	30,115	-1.61%	-47	83.66%	2.10%	9.29%
41	30,194	30,115	0.26%	79	92.86%	0.26%	7.04%
42	30,098	30,115	-0.06%	-17	90.01%	1.57%	2.75%
43	30,068	30,115	-0.16%	-47	82.80%	7.50%	4.33%
44	29,145	30,115	-3.22%	-970	88.15%	1.00%	11.85%
45	30,641	30,115	2.52%	726	79.78%	1.70%	11.42%
46	29,927	30,115	-0.63%	-188	88.90%	0.96%	3.21%
47	29,203	30,115	-3.03%	-912	85.64%	0.47%	4.10%
48	29,867	30,115	-0.89%	-268	70.66%	4.12%	14.24%
49	29,484	30,115	-2.10%	-631	42.03%	12.74%	38.84%
50	29,517	30,115	-1.79%	-598	72.73%	6.87%	9.95%
51	31,079	30,115	3.20%	964	71.97%	4.65%	8.16%
52	29,755	30,115	-1.20%	-360	58.13%	15.54%	21.74%
53	29,844	30,115	-1.56%	-471	71.15%	6.01%	16.40%
54	29,768	30,115	-1.15%	-347	82.30%	6.93%	5.25%
55	29,682	30,115	-1.44%	-433	68.97%	15.73%	6.40%
56	29,821	30,115	-0.89%	-299	65.95%	20.99%	34.95%
57	30,134	30,115	0.06%	19	89.83%	1.03%	8.37%
58	31,207	30,115	3.63%	1,092	79.08%	9.09%	20.92%
59	30,899	30,115	2.60%	784	86.86%	2.64%	4.17%
60	30,469	30,115	1.17%	354	78.60%	12.33%	3.97%
61	30,564	30,115	1.49%	449	66.49%	26.46%	3.00%
62	29,636	30,115	-1.59%	-479	40.92%	54.21%	2.24%
63	30,659	30,115	1.81%	544	38.98%	56.04%	3.09%
64	30,379	30,115	-0.88%	-262	24.63%	69.37%	3.38%
65	29,551	30,115	-1.87%	-564	26.50%	68.22%	2.44%
66	29,555	30,115	-1.86%	-560	35.58%	52.61%	6.39%
67	31,047	30,115	3.09%	932	58.13%	29.29%	5.46%
68	31,183	30,115	3.57%	1,068	81.17%	2.62%	14.81%
69	30,711	30,115	1.98%	596	75.30%	12.07%	6.77%
70	30,427	30,115	1.04%	312	70.83%	18.52%	4.17%
71	29,220	30,115	-2.97%	-895	63.95%	24.58%	4.75%
72	29,903	30,115	-0.70%	-212	32.55%	22.55%	19.39%
73	29,972	30,115	-0.48%	-143	74.66%	14.86%	3.14%
74	30,327	30,115	0.70%	212	67.55%	21.89%	4.19%
75	30,262	30,115	-0.49%	-147	63.28%	19.00%	4.23%
76	30,129	30,115	-0.04%	-13	73.89%	2.83%	16.30%
77	30,006	30,115	-0.36%	-109	26.44%	56.03%	12.63%
78	29,358	30,115	-2.51%	-757	83.16%	4.89%	4.61%
79	30,085	30,115	-0.17%	-50	17.62%	57.09%	23.88%
80	30,951	30,115	2.79%	836	68.19%	12.07%	11.89%
81	30,525	30,115	1.36%	410	66.19%	15.76%	13.21%
82	30,021	30,115	-0.31%	-94	77.04%	11.71%	6.10%
83	29,821	30,115	-0.89%	-294	88.28%	3.86%	3.21%
84	29,821	30,115	-0.89%	-294	88.28%	3.86%	3.21%
85	29,925	30,115	-0.63%	-190	85.87%	2.72%	5.60%
86	29,922	30,115	-0.64%	-193	86.69%	0.40%	6.02%
87	29,189	30,115	-3.08%	-926	66.80%	9.47%	20.52%
88	30,356	30,115	0.80%	241	55.02%	28.21%	14.28%
89	29,332	30,115	-2.60%	-783	75.69%	13.78%	6.43%
90	29,709	30,115	-1.35%	-406	77.69%	12.90%	4.22%
91	30,145	30,115	0.10%	30	73.62%	10.99%	8.86%
92	31,129	30,115	3.35%	1,014	68.80%	2.83%	11.11%
93	30,915	30,115	2.68%	804	81.16%	11.30%	2.94%
94	29,908	30,115	-0.69%	-207	57.11%	32.44%	7.69%
95	29,270	30,115	-2.81%	-845	57.78%	34.44%	5.79%
96	30,051	30,115	-0.21%	-64	68.19%	14.16%	31.69%
97	30,182	30,115	0.22%	67	56.68%	35.11%	4.88%
98	30,460	30,115	1.44%	435	49.04%	44.65%	2.45%
99	29,605	30,115	-1.69%	-510	76.00%	16.78%	3.11%
100	30,106	30,115	-0.03%	-9	56.95%	34.41%	4.33%